



Croydon Data Hack

October 4th 2018



Why a data event??





USER DATA

Information on the characteristics of the people you are reaching.

[VIEW MORE](#) 



ENGAGEMENT DATA


Information on how service users are using your service, and the extent to which they use it.

[VIEW MORE](#) 



FEEDBACK DATA


Information on what people think about the service.

[VIEW MORE](#) 



OUTCOMES DATA

Information on the short term changes, benefits or assets people have got from the service.

[VIEW MORE](#) 

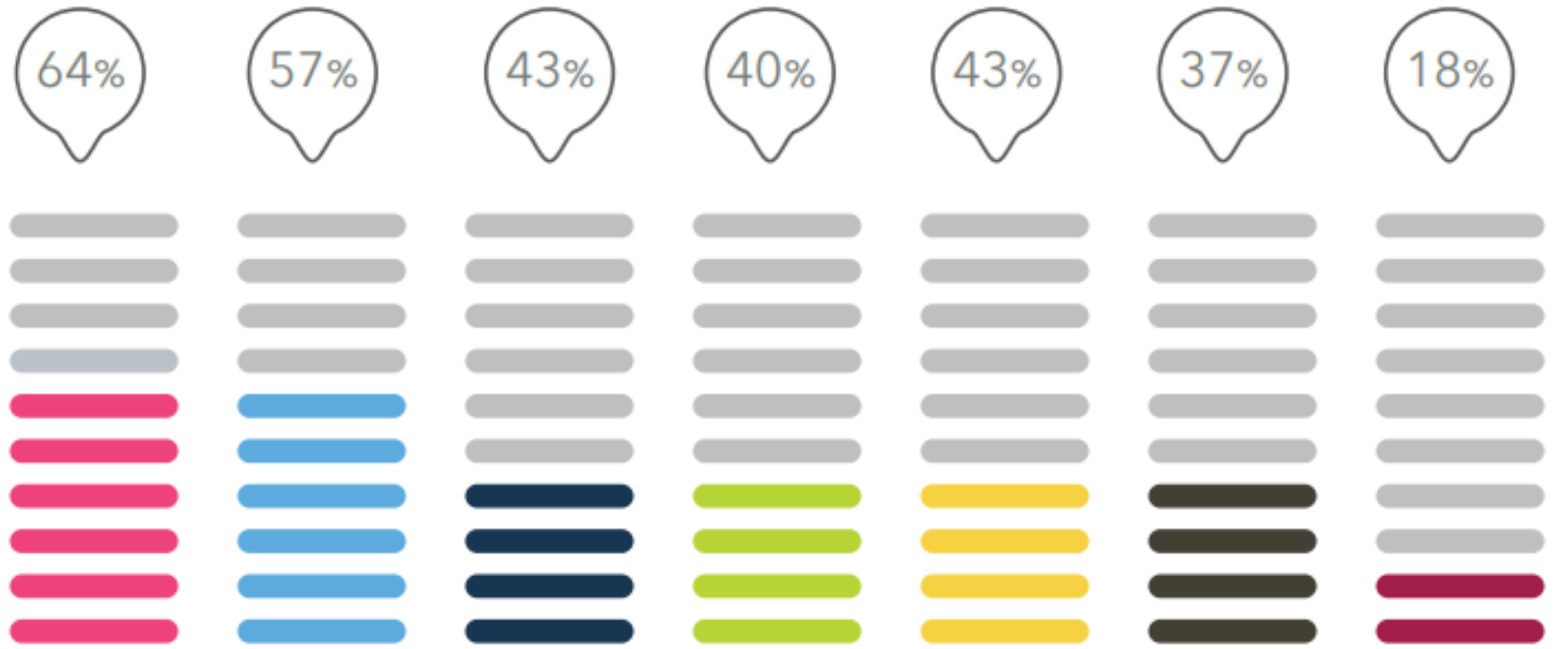


IMPACT DATA

Information on the long-term difference that have resulted from the service.

[VIEW MORE](#) 

**DATA
EVOLUTION
PROJECT**



Have confidence and trust in the quality of their data

Collect the right data

Have the right skills to analyse data in useful and meaningful ways

Have good tools and systems for collecting, managing and analysing data

Have robust data governance i.e. ownership, management, policies, access and control

Say data is accessible to everyone in the organisation that needs it

Invest enough in data related resources i.e. people, skills, learning, tools

Social Sector Data Maturity Framework



- LEADERSHIP
- SKILLS
- CULTURE
- DATA
- TOOLS
- USES
- ANALYSIS

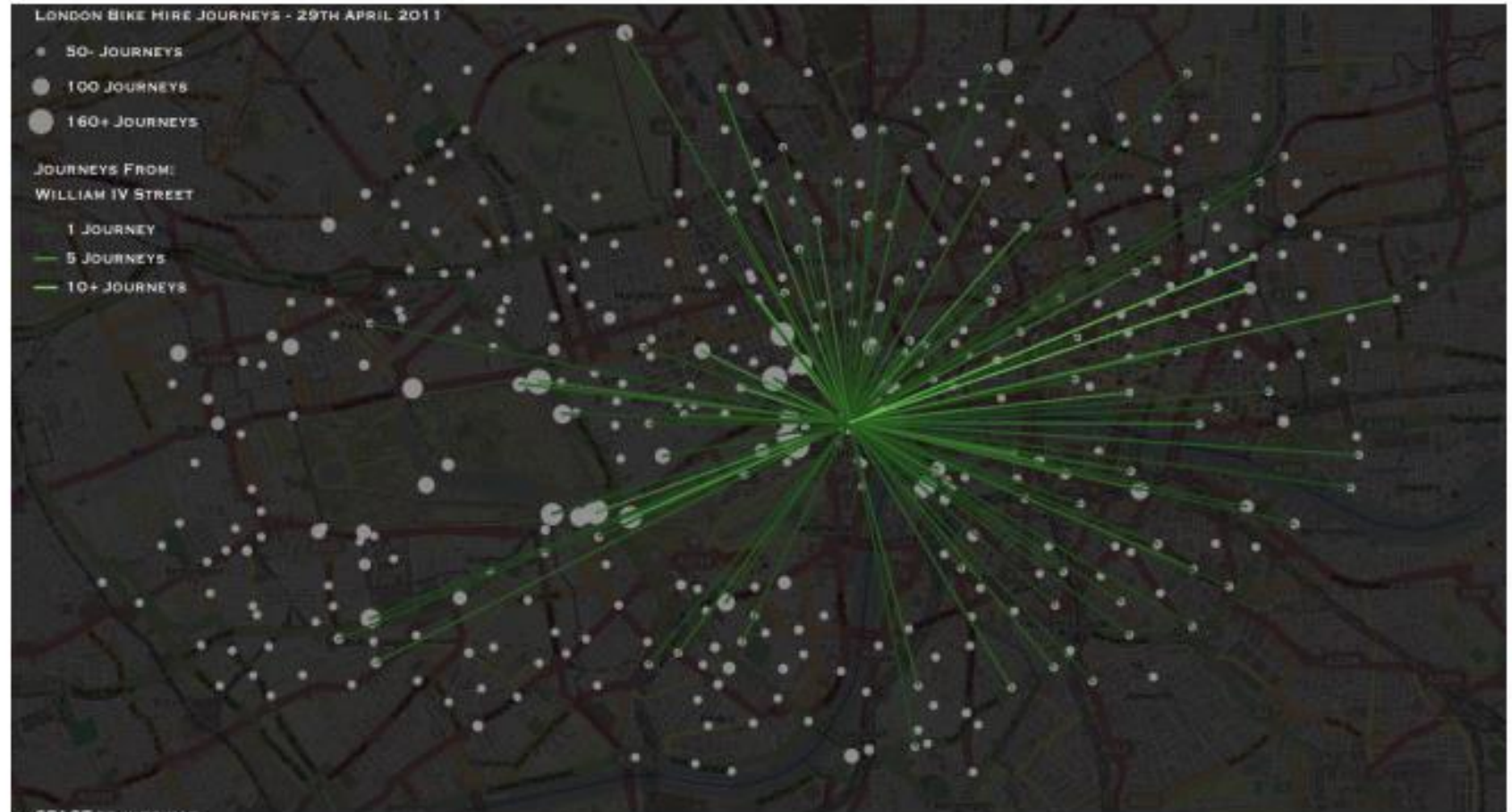
7 KEY THEMES



5 STAGE JOURNEY



Data Sharing for London Civil Society



How well do you do with data?

Mentimeter results at

[https://www.mentimeter.com/s/cb349eb437d
fc031b260f3bab621a7a0/9b047ff5a6e6](https://www.mentimeter.com/s/cb349eb437dfc031b260f3bab621a7a0/9b047ff5a6e6)



Local groups share their data adventures!





Data Journey

Data tools we use

- ▶ SQL Database
- ▶ Access Database
- ▶ Website Analytics
- ▶ Batch Geo

How we present our data

- ▶ Quarterly Reports
- ▶ Breakdown of services
- ▶ Info Graphics
- ▶ Annual Report

Outcomes from our data

- ▶ From collecting postcodes we could see there was a demand in the North of the Borough so we have opened a satellite counselling service in Upper Norwood
- ▶ Analysing presenting issues identifies areas for CPPD
- ▶ There was an Increase in the number of young people presenting with Identity Issues therefore we held a Gender Identity Conference.

Challenges

- ▶ Demands from funders eg. NHSE Database
- ▶ Keeping software up to date eg. Access
- ▶ Capacity - The amount of time it takes to enter and have confidence in your data.

Future Goals

- ▶ Smarter around data
- ▶ Use one database
- ▶ Google Analytics

CVA – ABCD app



CROYDON
www.croydon.gov.uk

Croydon Health Services **NHS**
NHS Trust

Best Start ABCD app

4. Is this?

- The first time talking with this person
- A follow on conversation

5. Conversation details (include only first name of person if you need to)

* 6. Choose one or more categories?

- Emotional Health & Wellbeing
- Physical Health & Activities
- Stronger Social Networks
- Early Years Learning & Development
- Improving Local Environment
- Community Safety
- Employment & Training
- Other (please specify)

* 7. Was it an ...?

- Idea / Passion
- Emerging project new
- Emerging project ongoing
- New connector



Useful free tools – show & tell..

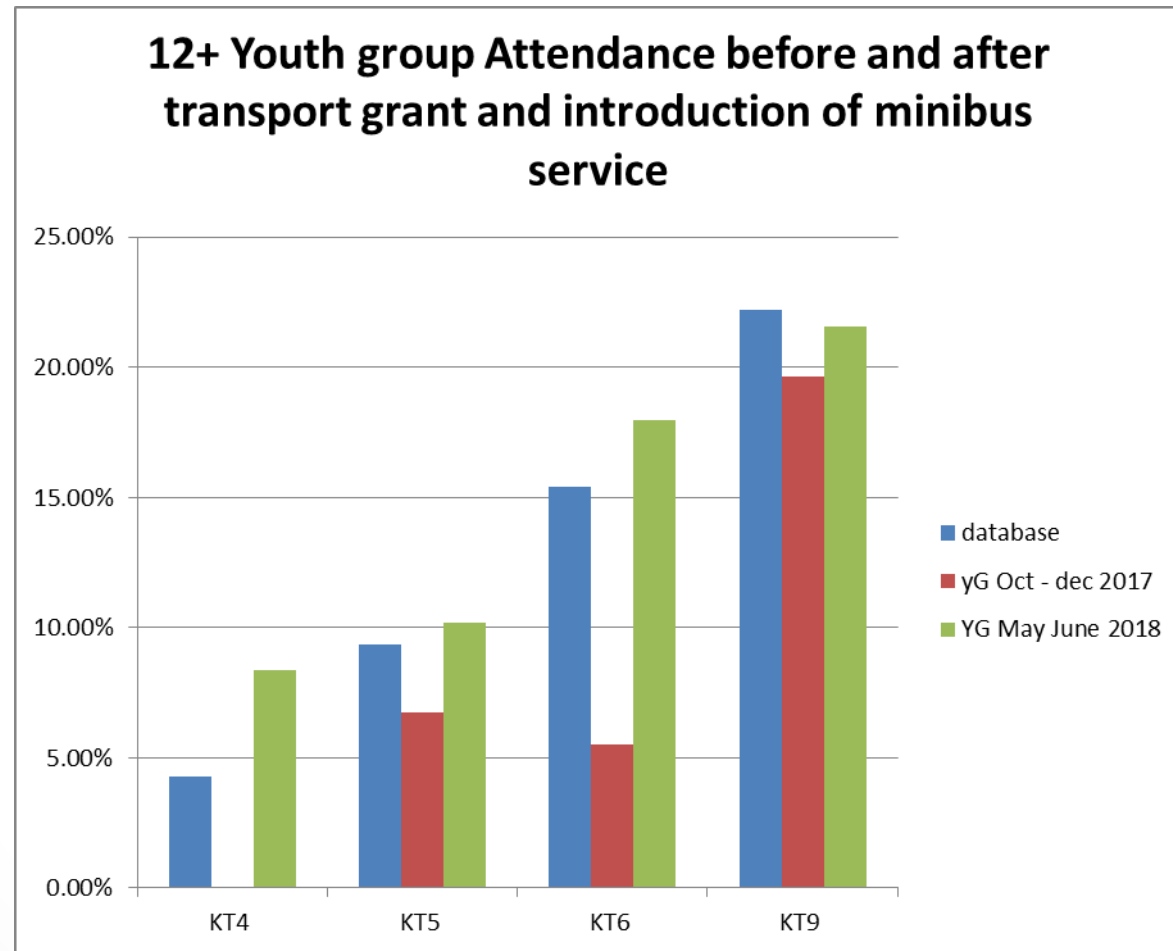


*“ I believe very strongly that charities benefit from investing in upskilling their workforce around IT and **Excel** is a fantastic tool. I will be encouraging my fellow workers to attend Superhighways Excel training themselves.*

Not only did the course give me confidence that the spreadsheets I have already designed to capture elements of our outcomes are well thought out, it gave me other ideas of things I can do.”



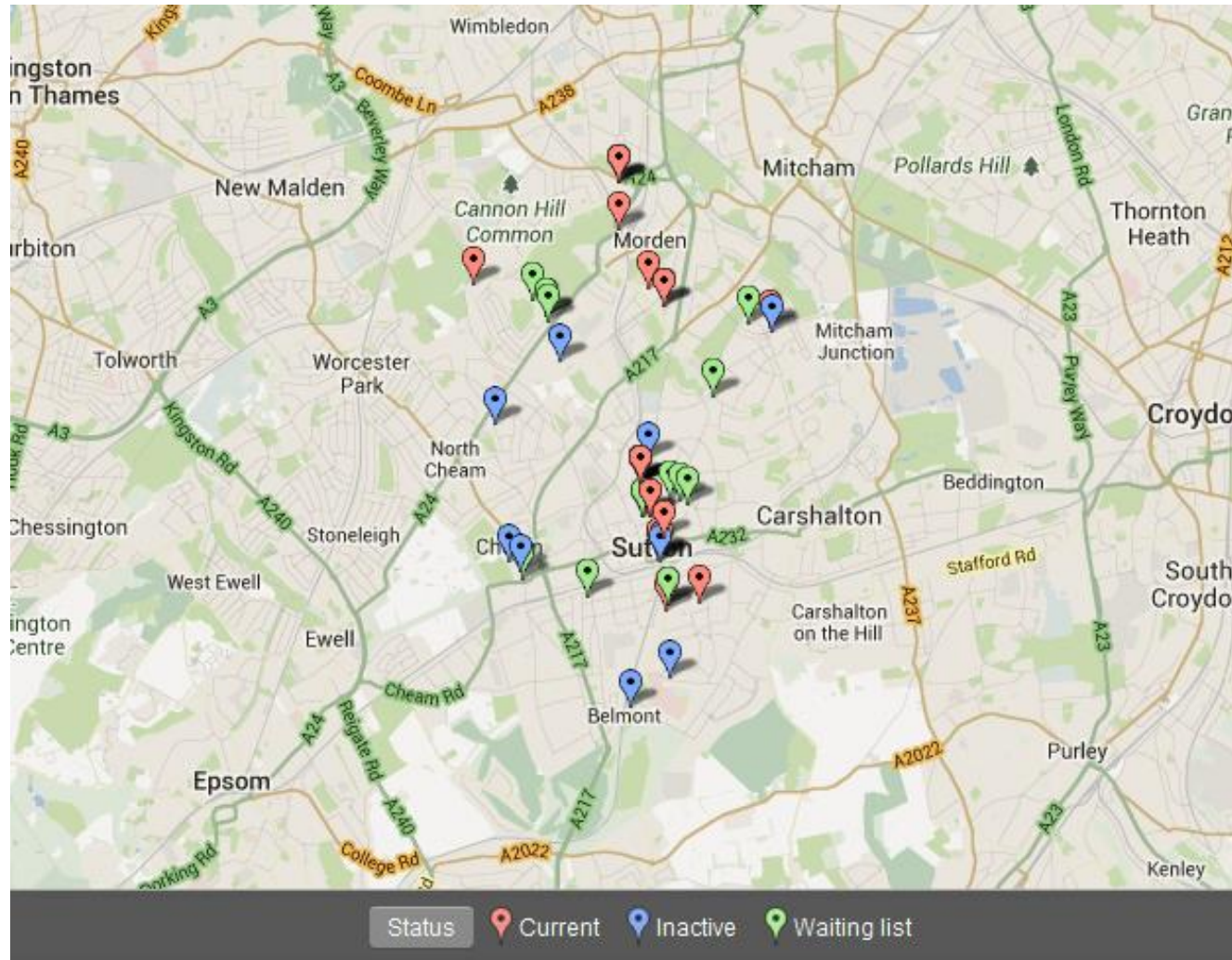
Interrogate, Shape, Fund, Grow, Report!



Simplest map creation...

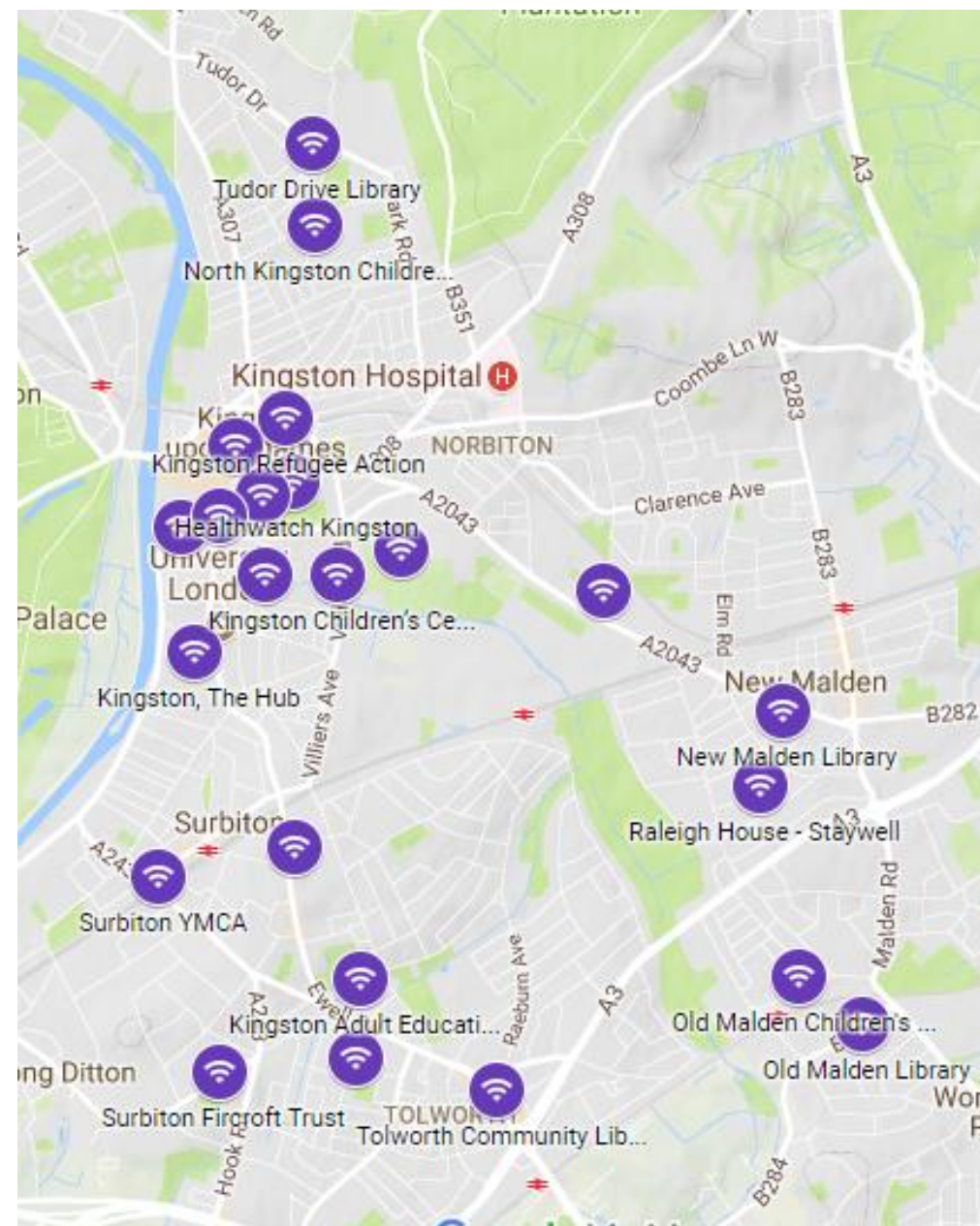
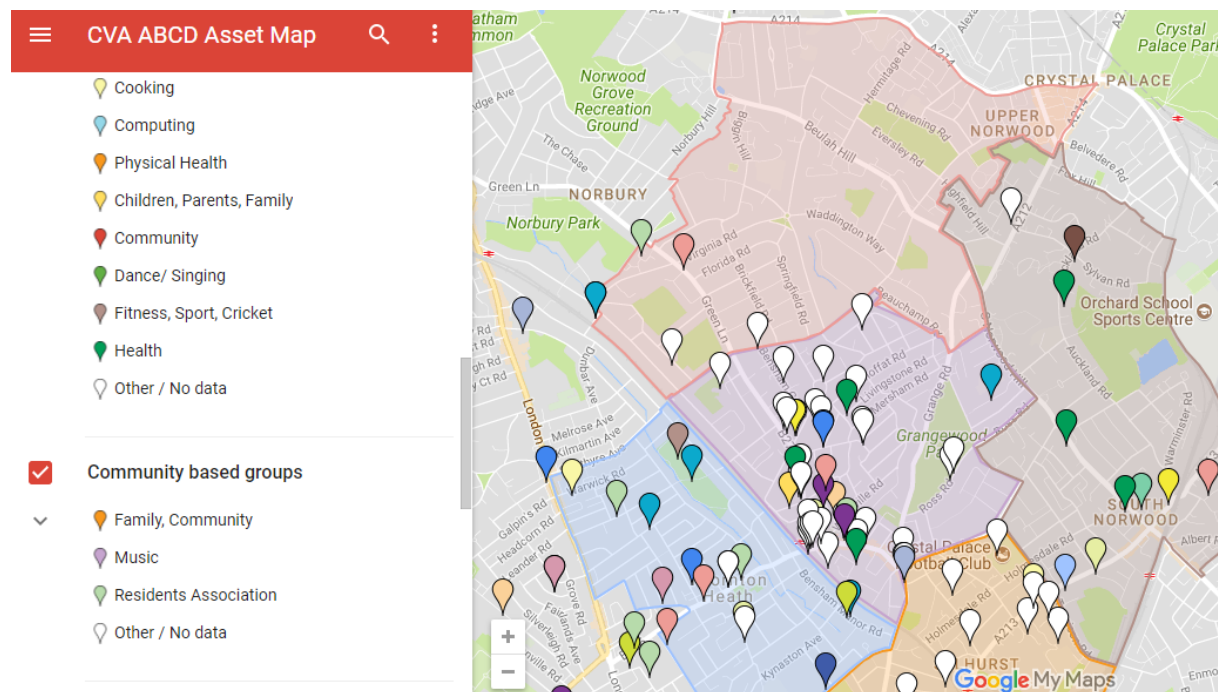


Paste data sets with postcodes & create a map!

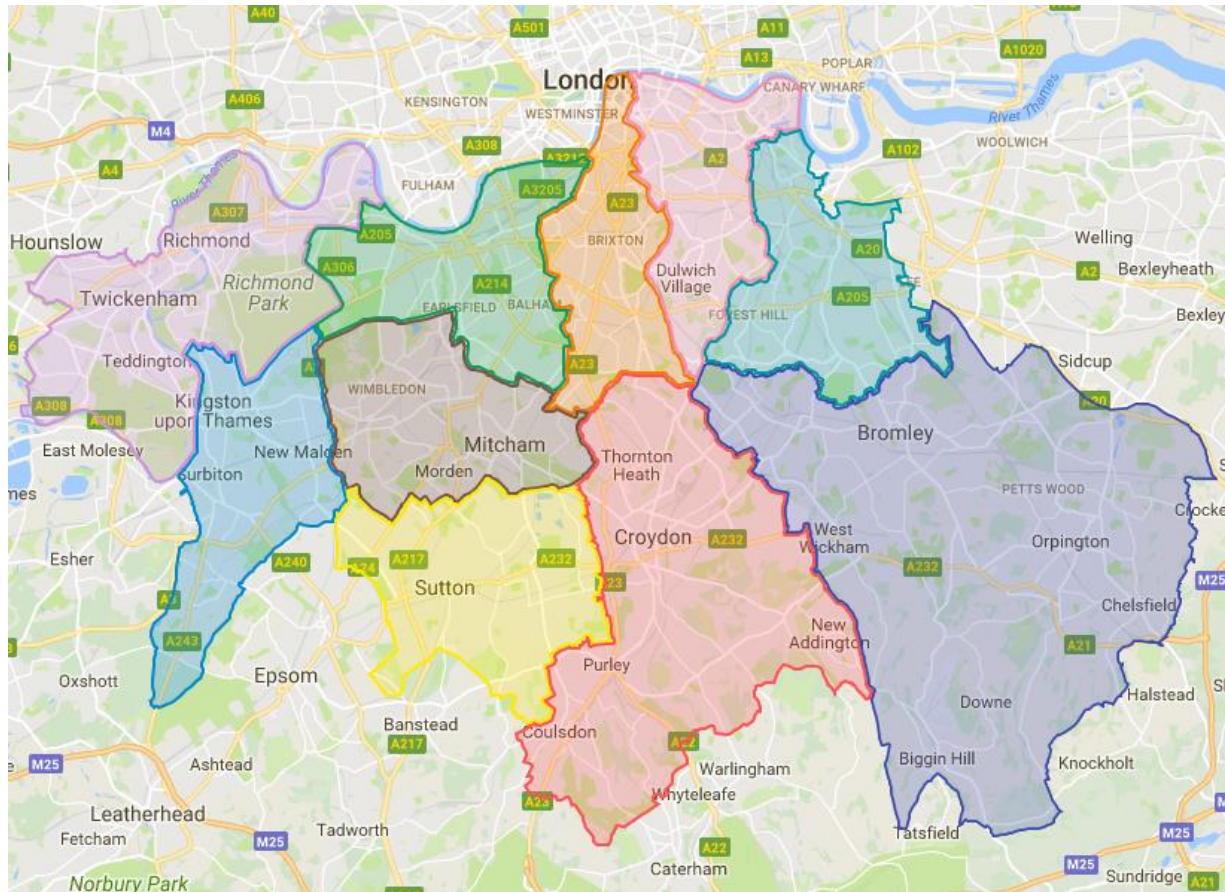


Google My Maps

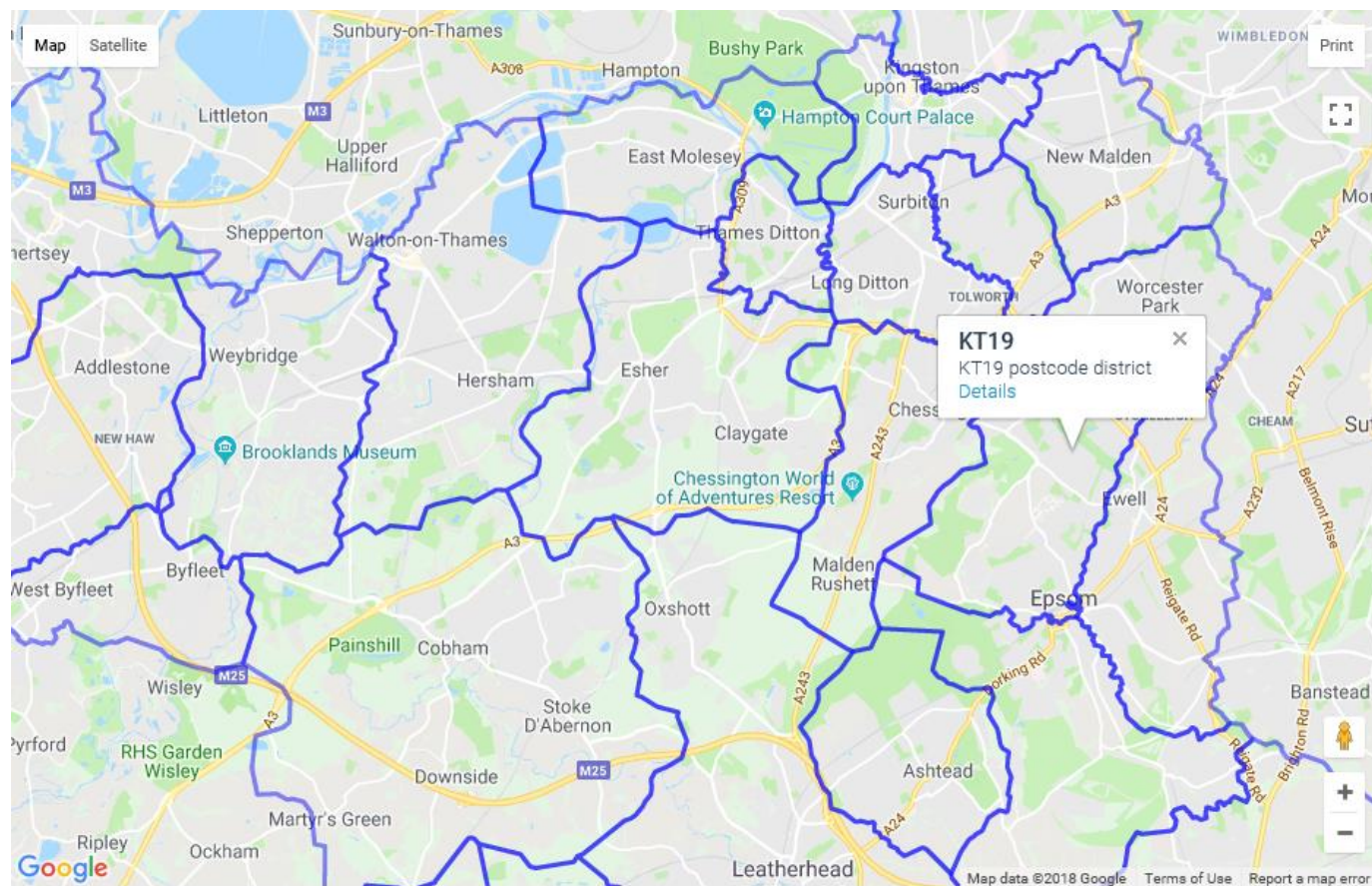
- Add multi-media
- Add different layers (max 10)
- Customise look and feel



Borough & Ward – KML files



Post code boundaries



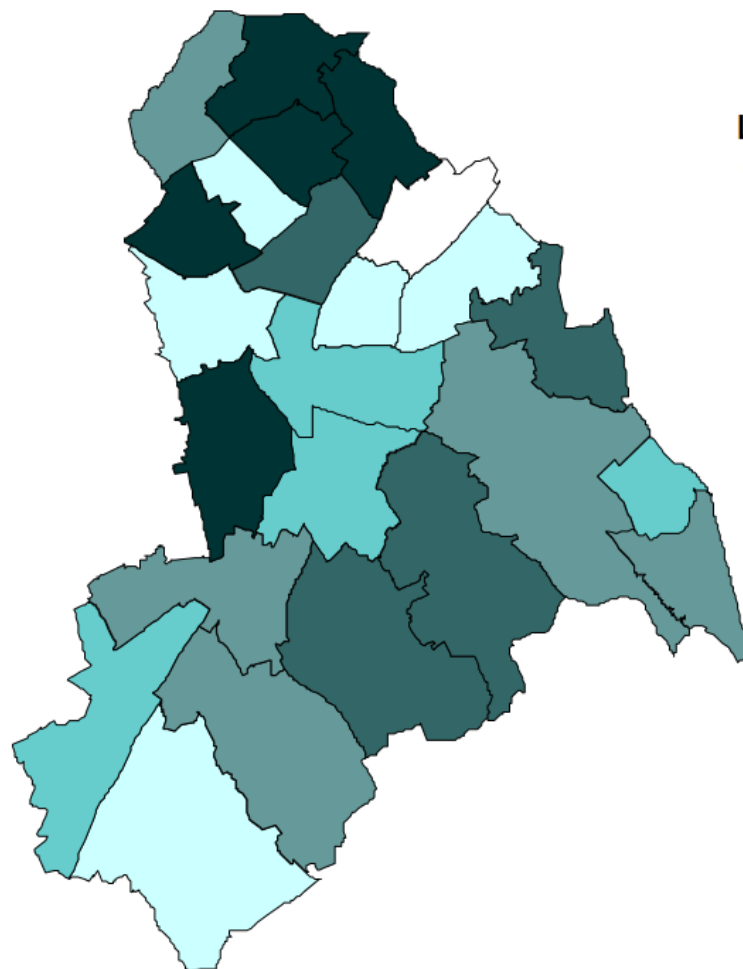
- [Doogal](#) – top level boundaries shapes e.g. KT



Choropleths

- London Data Store Borough & Ward [Excel mapping templates](#)

Code	Ward name	Values
00AHGE	Addiscombe	100.0
00AHGF	Ashburton	105.0
00AHGG	Bensham Manor	110.0
00AHGH	Broad Green	115.0
00AHGJ	Coulsdon East	120.0
00AHGK	Coulsdon West	125.0
00AHGL	Croham	130.0
00AHGM	Fairfield	135.0
00AHGN	Fieldway	140.0
00AHGP	Heathfield	145.0
00AHGQ	Kenley	150.0
00AHGR	New Addington	155.0
00AHGS	Norbury	160.0
00AHGT	Purley	165.0
00AHGU	Sanderstead	170.0
00AHGW	Selhurst	175.0
00AHGX	Selsdon and Ballards	180.0
00AHGY	Shirley	185.0
00AHGZ	South Norwood	190.0
00AHHA	Thornton Heath	195.0
00AHHB	Upper Norwood	200.0
00AHHC	Waddon	205.0
00AHHD	West Thornton	210.0
00AHHE	Woodside	n/a



Legend

Quantiles	Low (\geq)	(<) High	Occurrences
1	100	122	(5)
2	122	144	(4)
3	144	166	(5)
4	166	188	(4)
5	188	210	(5)
No data			(1)



Data analysis / visualisation - next steps



[Carto](#) – non profit application for the Builder application



[Tableau](#) – non profit discount available via [Tech Trust](#)



[Flourish](#) – free for public maps



[PowerBI](#) – free desk top download or Office 365 app (if you have an O365 subscription)



Power BI





superhighways

harnessing technology for community benefit



TUE, 4 DEC 10:00

Office 365 - not just email & file storage - but an amazing tool box of extremely useful apps!

CVA Resource Centre, Croydon



superhighways

harnessing technology for community benefit



TUE, 15 JAN 10:00

Publicity and Infographics with Canva and Piktochart - Croydon, January 2019

Croydon Voluntary Action, Croydon

£42

#CharitiesCauses #Course



superhighways

harnessing technology for community benefit



TUE, 5 FEB 10:00

Excel for monitoring & evaluating your impact - Croydon, Feb 2019

Croydon Voluntary Action, Croydon

£66

#CharitiesCauses #Course



CROYDON COMMUNITY SERVICES

COMMUNITY BASED CARE AND CONNECTIONS TO PREVENT MULTIPLE HOSPITAL ADMISSIONS

Supporting the People of Croydon Through Utilising Existing Services

Prof. Reem Kayyali
Kingston University London
r.kayyali@kingston.ac.uk



Identifying the Relevant Services

- Both primary and secondary health care professionals require a means of quickly finding relevant local services.
- Up to date contact details
- Details of the service
- Referral path
- **Locality of the service**



Readmissions By Condition

Ward IMD: 60%



All Readmissions (13,052)

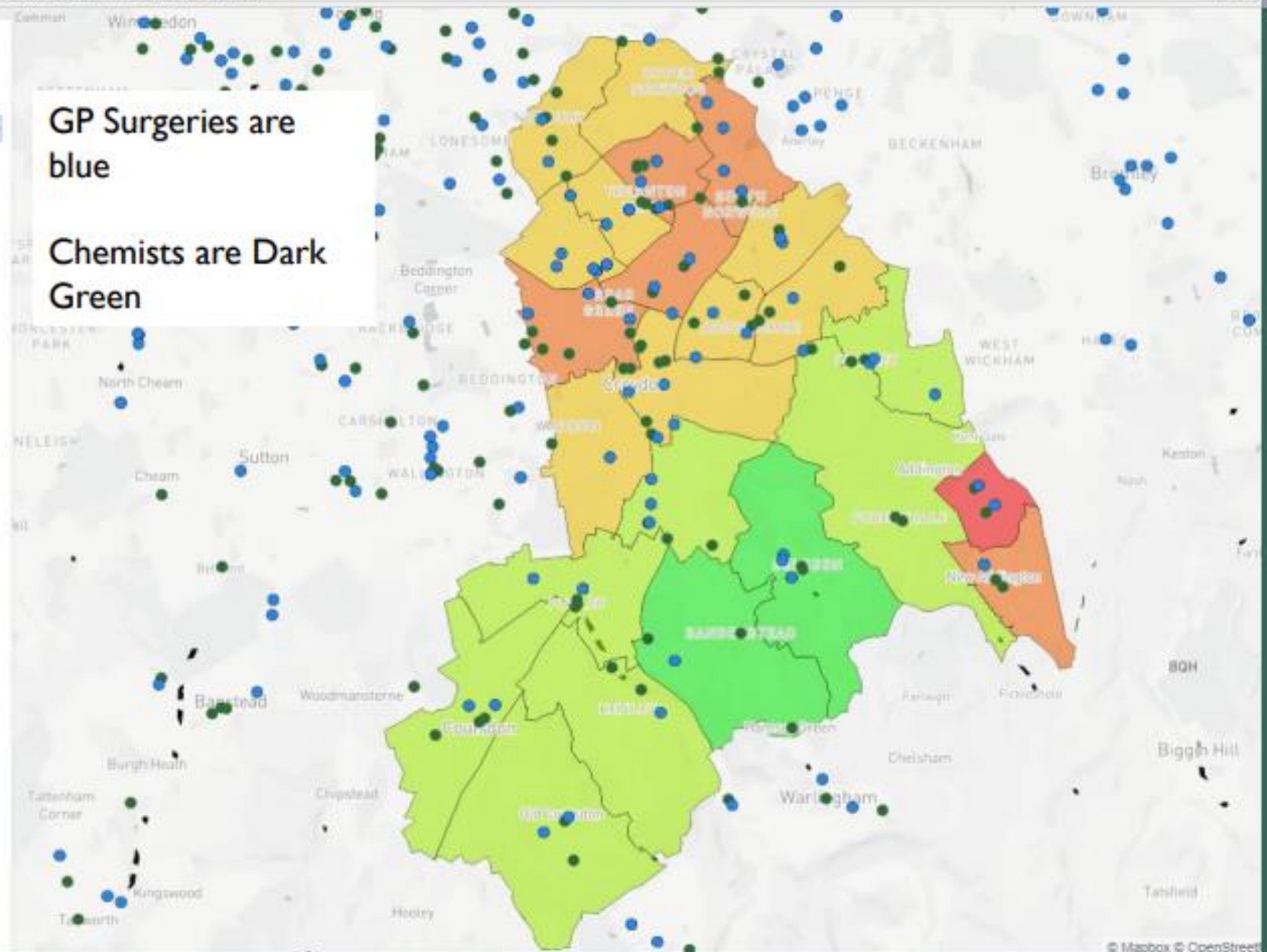
Filter by most frequent condition(s)

- Asthma (Unspecified)
- AtheroscleroticHeartDisease_130
- ChestPainUnspecified_128
- ChronicObstructPulmonaryDisWithAcuteLowerRespnfec_155
- CongestiveHeartFailure_112
- Constipation_127
- DentalCariesUnspecified_114
- DiverticularDisOfLargeintestineWithoutPerfOrAbscess_139
- GastroenteritisAndColitisOfUnspecifiedOrign_150
- LobarPneumoniaUnspecified_144
- MultipleMyeloma_121
- OtherAndUnspecifiedAbdominalPain_126
- PneumoniaUnspecified_164
- RheumatoidArthritisUnspecified_186
- TendencyToFallNotElsewhereClassified_110
- UnspecifiedAcuteLowerRespiratoryinfection_154
- UnspecifiedHaematuria_127
- UrinaryTractinfectionSiteNotSpecified_410
- Viral Infection (Unspecified)

Select All Clear All

Points Of interest

- GPs
- Chemists
- Civil Society Orgs



Readmissions By Condition

Ward IMD: 60%

All Readmissions (13,062)

Filter by most frequent condition(s)

- Asthma (Unspecified)
- AtheroscleroticHeartDisease_130
- ChestPainUnspecified_128
- ChronicObstructivePulmonaryDisWithAcuteLowerRespirac_155
- CongestiveHeartFailure_112
- Constipation_127
- DentalCariesUnspecified_114
- DiverticularDisOfLargeIntestineWithoutPeriOrAbscess_139
- GastroenteritisAndColitisOfUnspecifiedOrigin_150
- LobarPneumoniaUnspecified_144
- MultipleMyeloma_121
- OtherAndUnspecifiedAbdominalPain_120
- PneumoniaUnspecified_164
- RheumatoidArthritisUnspecified_186
- TendencyToFallNotElsewhereClassified_110
- UnspecifiedAcuteLowerRespiratoryInfection_154
- UnspecifiedHaematuria_127
- UrinaryTractInfectionSiteNotSpecified_410
- Viral Infection (Unspecified)

Select All Clear All

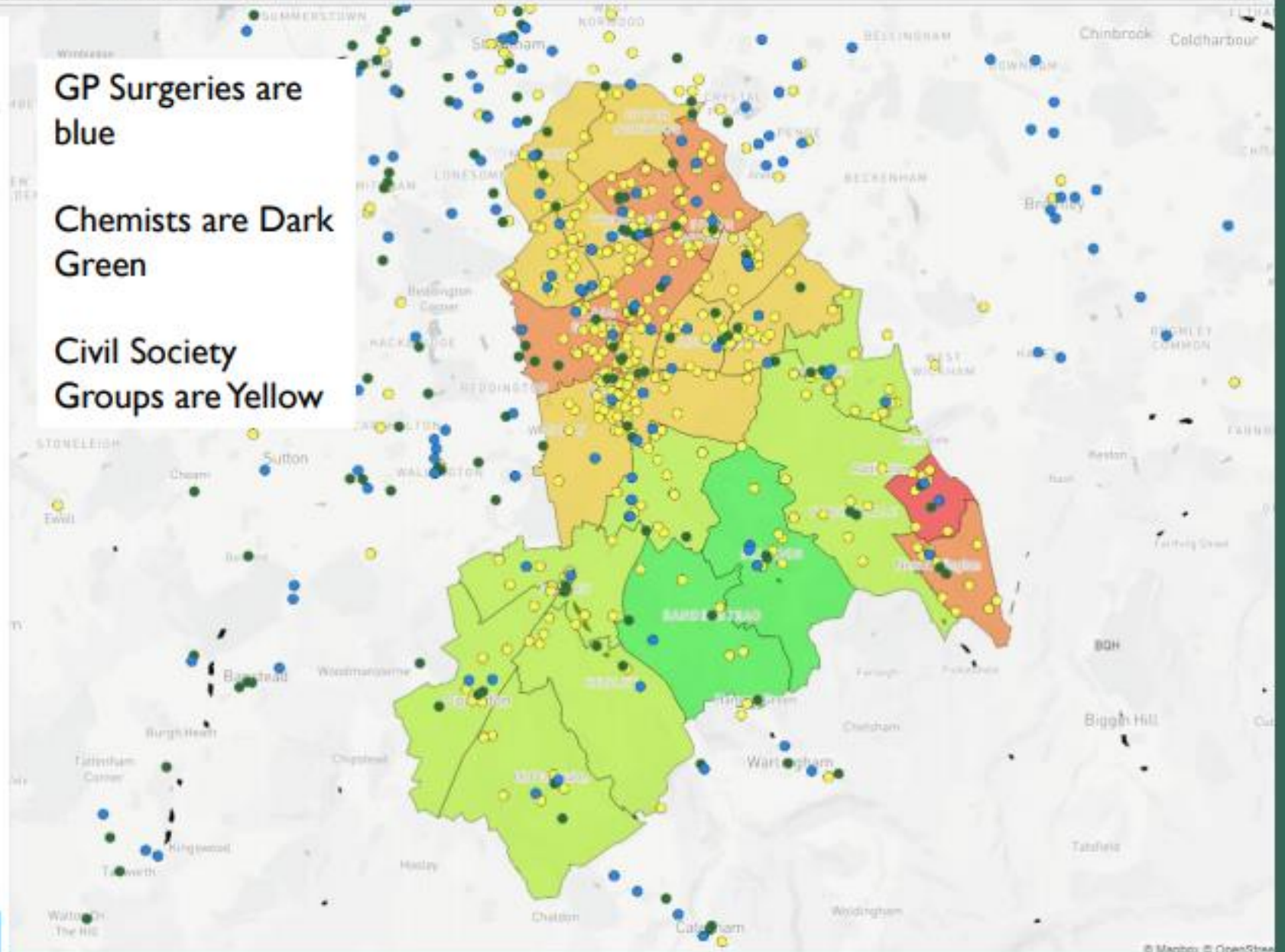
Points Of Interest

- GPs
- Chemists
- Civil Society Orgs

GP Surgeries are blue

Chemists are Dark Green

Civil Society Groups are Yellow

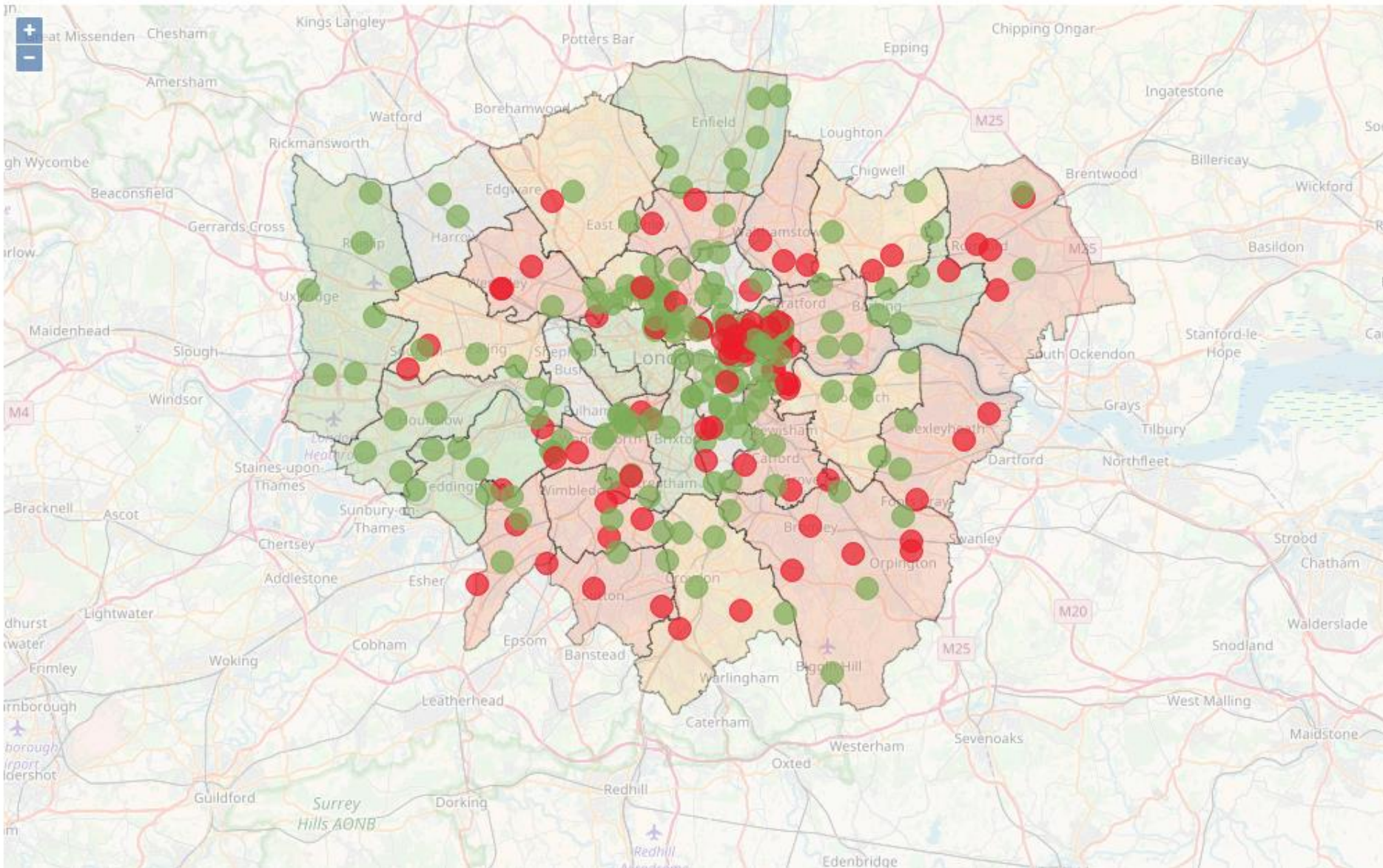


USE OF DATA

We can measure changes in readmissions

- **Can communicating with community groups reduce readmissions and improve community wide health and safety nets?**
- We have data about the most prevalent diagnoses, can we target campaigns to reduce readmission for preventable illnesses, such as the leading UTI diagnosis?

London's Lost Youth Services - 2018 data compiled by Sian Berry AM



Click on a borough or youth centre to see more info.

Read the full report on youth service cuts in 2018:

The report cover features a blue header with the title "LONDON'S LOST YOUTH SERVICES 2018". Below the title is a collage of three images: a young woman looking through a metal fence, two young women talking, and a young woman with a headscarf. At the bottom, it reads "A briefing by Sian Berry AM Green Party Member of the London Assembly March 2018" and includes a small logo.

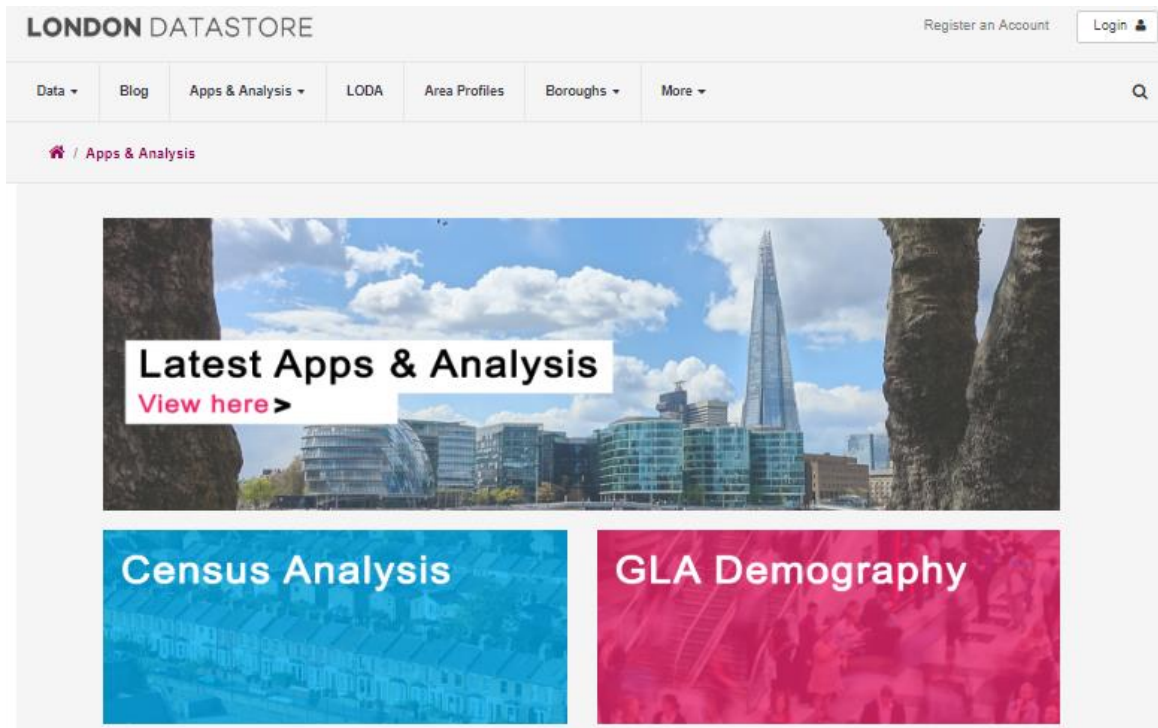
It's break time!

Other useful sources of data

LONDON DATASTORE Register an Account Login

Data ▾ Blog Apps & Analysis ▾ LODA Area Profiles Boroughs ▾ More ▾ Q

[/ Apps & Analysis](#)



Latest Apps & Analysis
[View here >](#)

Census Analysis

GLA Demography

A Londoner in poverty is more likely to be...



in a working family than a workless one,

living in Outer London than Inner,

and renting from a private landlord than a council or housing association.

Figure 10: London's Poverty Profile 2011

London Poverty Profile 2011 



Londonmapper
A Social Atlas of London



360Giving

Open data for more effective grantmaking



What they do

We support grantmakers to publish their grants data openly, to understand their data and to use the data as part of a more innovative and informed approach to grantmaking.



Publishing data to the 360 Standard



Exploring the data with GrantNav - <http://grantnav.threesixtygiving.org>

GRANTNAV

Search All

Try these examples: "arts centre" · volunteers · "360G-wolfson-19750" · [Only Locations] Bristol · [Only Recipients] children

Search, explore and download UK grant data from funders publishing open data to the 360Giving Standard.

69	163,222	255,712
Funders	Recipients	Grants

The screenshot shows the GrantNav website interface. At the top left, the text 'GRANTNAV' is displayed in white. Below it is a search bar with a dropdown menu currently set to 'Search All'. The search input field contains the placeholder text 'What are you searching for?' and a magnifying glass icon on the right. Underneath the search bar, there are several example search terms in rounded rectangular boxes: '"arts centre"', 'volunteers', '"360G-wolfson-19750"', '[Only Locations] Bristol', and '[Only Recipients] children'. Below the examples, a central message reads 'Search, explore and download UK grant data from funders publishing open data to the 360Giving Standard.' At the bottom, three statistics are presented in a row, each with a large number and a label below it: '69 Funders', '163,222 Recipients', and '255,712 Grants'.

Digging the Data

360Giving Data Visualisation Challenge

Enter our prize challenge and your visualisation could win
thousands of pounds

SUBMIT PROJECT



Current Filters

Clear All Filters

Districts: Croydon London Boro ✕

Filter By

Currency

GBP (927)

Amount Awarded (GBP)

Smallest Largest Apply

£0 - £500 (19)

£500 - £1,000 (46)

£1,000 - £5,000 (204)

See More

Recipient Region

London (927)

Recipient District (clear)

Croydon London Boro (927)

Results Sort By: Best Match

↓ .CSV
↓ .JSON

Total grants	927	Total GBP grants	927
Total funders	22	Total GBP awarded	£33,981,446
Total recipients	684	Largest GBP award	£6,003,604
Earliest award date	05 Feb 2003	Smallest GBP award	£0
Latest award date	05 Jun 2018	Total Non-GBP grants	0

Grant to Age UK Croydon 24 Mar 2016

£2,150 to commission an independent access audit for 81 Brigstock Road, Croydon.

Amount: £2,150
Funder: City Bridge Trust
Recipient: Age UK Croydon
Region: London
District: Croydon London Boro

Croydon Drop In Website 04 Mar 2015

Not Available

Amount: £8,500
Funder: The Big Lottery Fund
Recipient: Croydon Drop In (CDI)
Region: London
District: Croydon London Boro

Data Q&As

Over to you!



katewhite@superhighways.org.uk

Tel: 020 8255 8040

www.superhighways.org.uk

@SuperhighwaysUK

