



Bexley Data Hack

DISCOVER. LEARN. ANALYSE. SHAPE. REPEAT.





Our mission is to help you unlock the value of your data.



Today's agenda: morning

Welcome & Check in

Bexley Quick Quiz

Following a hunch

11:15 Break

What does your own data tell you?

Exploring external data sources

External data – uses and pitfalls

12:30 Lunch (1 hour)



Today's agenda: afternoon

13:30 Welcome back from Lunch

Data sources - uses and pitfalls recap

Mapping - practical session

Quick comfort break

Data exploration deep dive

Time for you

Check out

15:00 CLOSE



Bexley Big Quiz



Let's see what we know about the Borough of Bexley...



Zoom poll

- 1) What is the total population of Bexley?
- 2) Where does Bexley rank in the Indices of Multiple Deprivation?
- 3) What's the difference in life expectancy and healthy life expectancy for women in Bexley?

Bonus questions...

- 4) What does Bexley come top in, in borough comparisons?
- 5) Mystery map

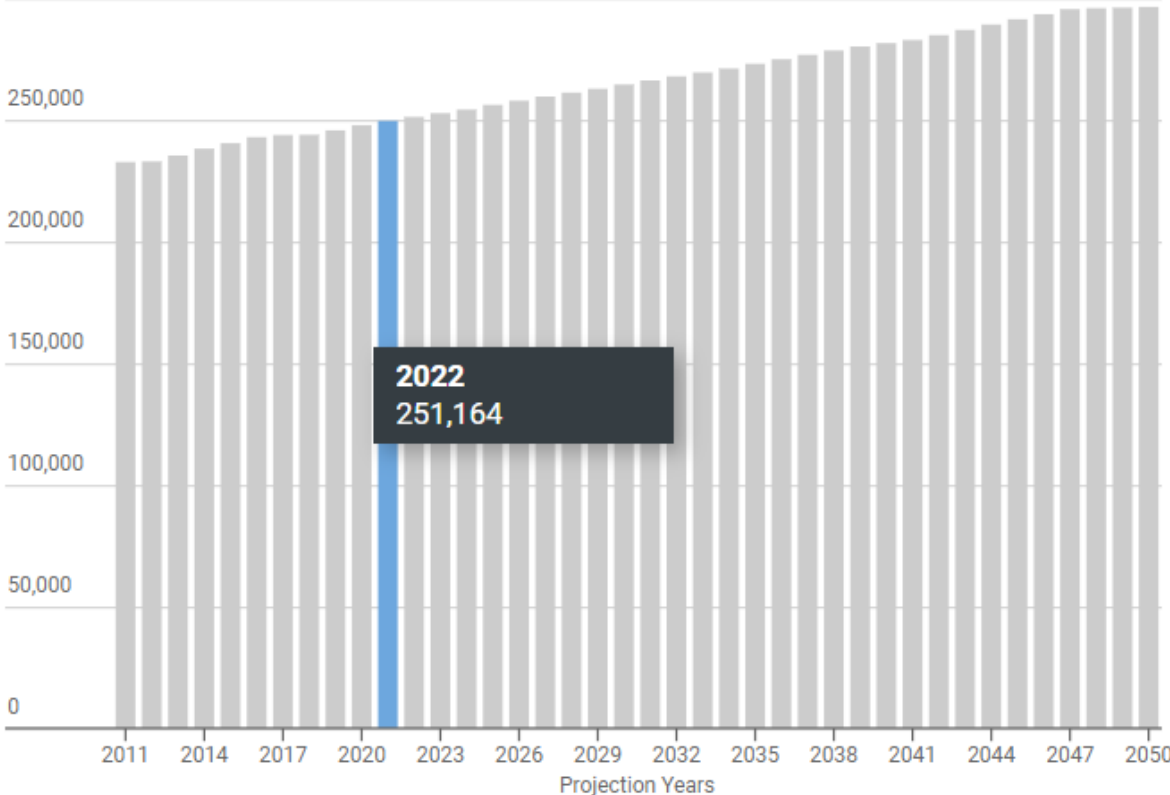
Population Projections Explorer

<https://maps.london.gov.uk/population-projections>

Population Projection: Bexley

Housing Led, Borough Total, All persons, Both Sexes, 0 - 90

300,000 People (projected)

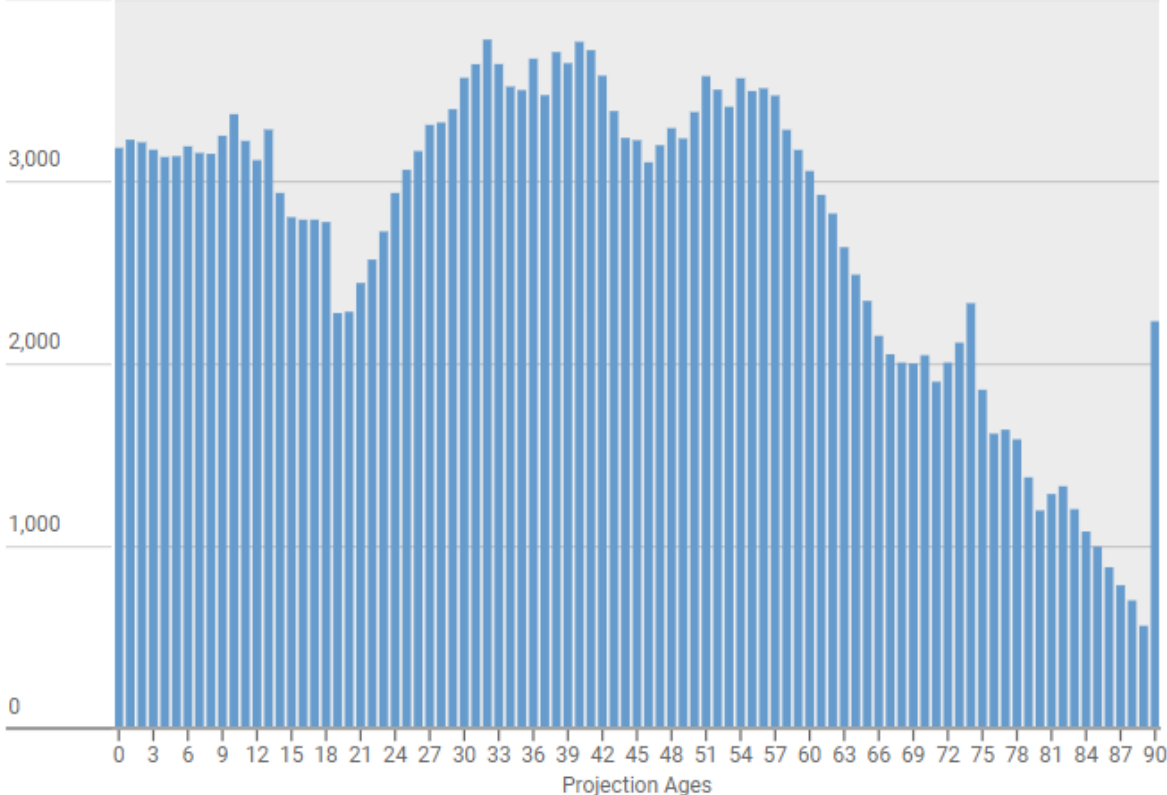


Source: GLA Demography 2018 Based Population Projections
Graphic by GLA City Intelligence

Population by Age: Bexley

Housing Led, 2021, Borough Total, All persons, Both Sexes

4,000 People (projected)



Source: GLA Demography 2018 Based Population Projections
Graphic by GLA City Intelligence

LONDON POPULATION PROJECTIONS EXPLORER



Explore the 2018 based population projections produced by GLA demography. Select which component you are interested in, a projection, and then a location, time and demographic profile:

Projections & Components

Various projections are available. (Note: Not all options are available within every projection) :

Projection: **Housing Led**

Select which component you would like to explore (Population, Births, Deaths, etc) :

Component: **Population**

Where, When & Who

Select location, time and demographic profile:

Borough: **Bexley**

Ward: **Borough Total**

Year: **2021**

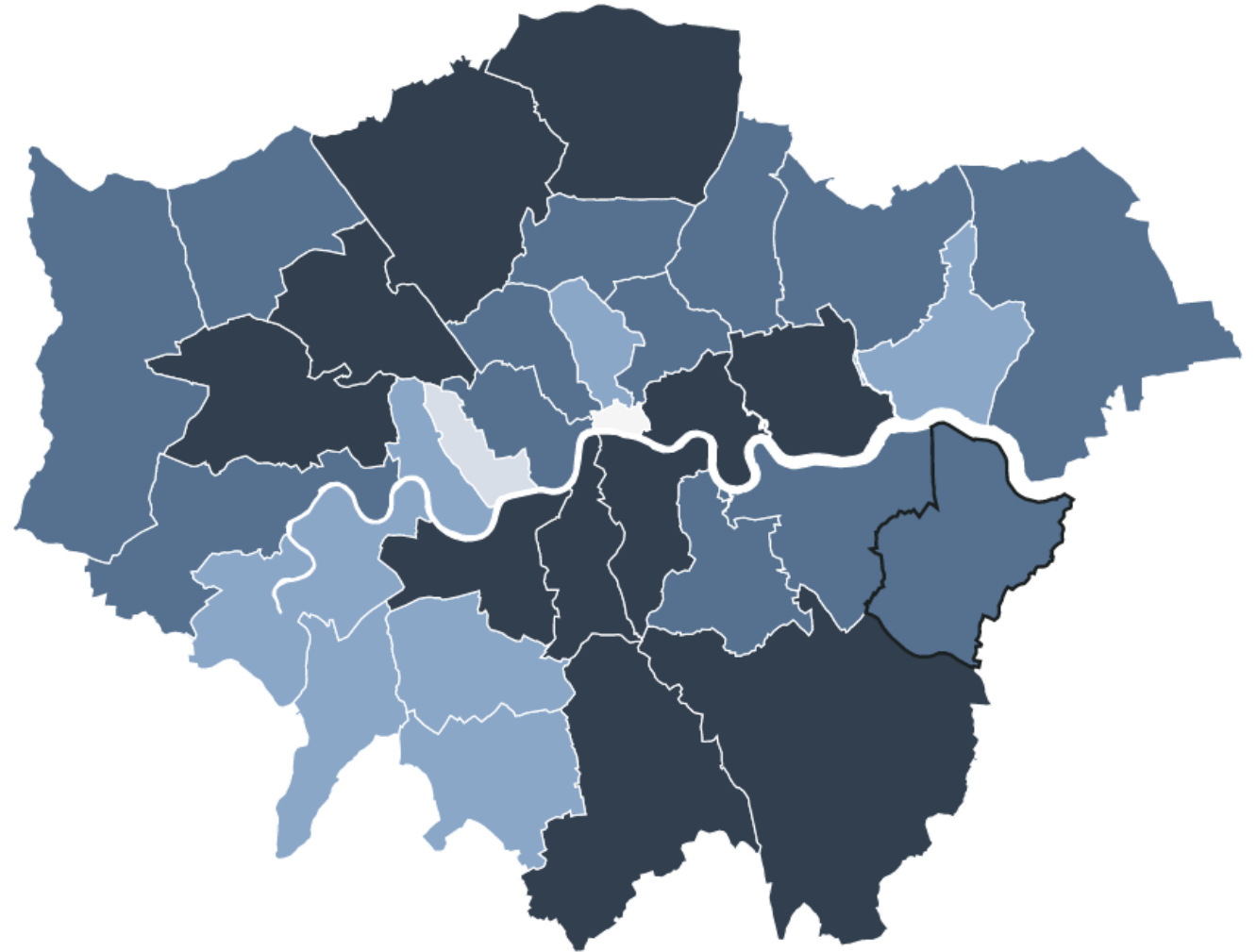
Ethnicity: **All persons**

Sex: **Both Sexes**

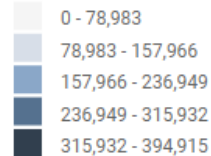
Age From: **0** Age To: **90**

CITY INTELLIGENCE

Designed and developed by GLA City Intelligence

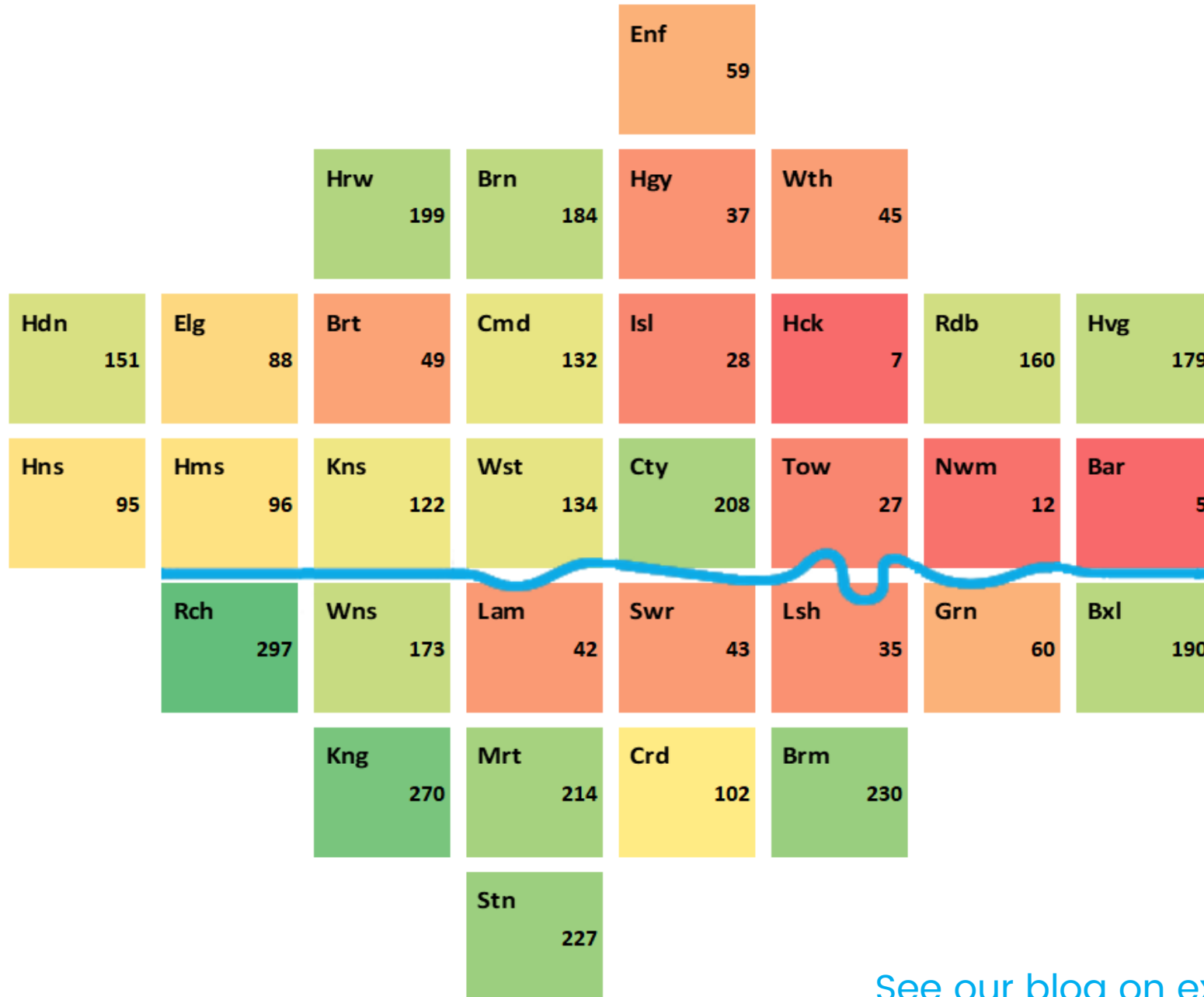


Number of People in Borough



Source: GLA Demography 2018 Based Population Projections
Graphic by GLA City Intelligence

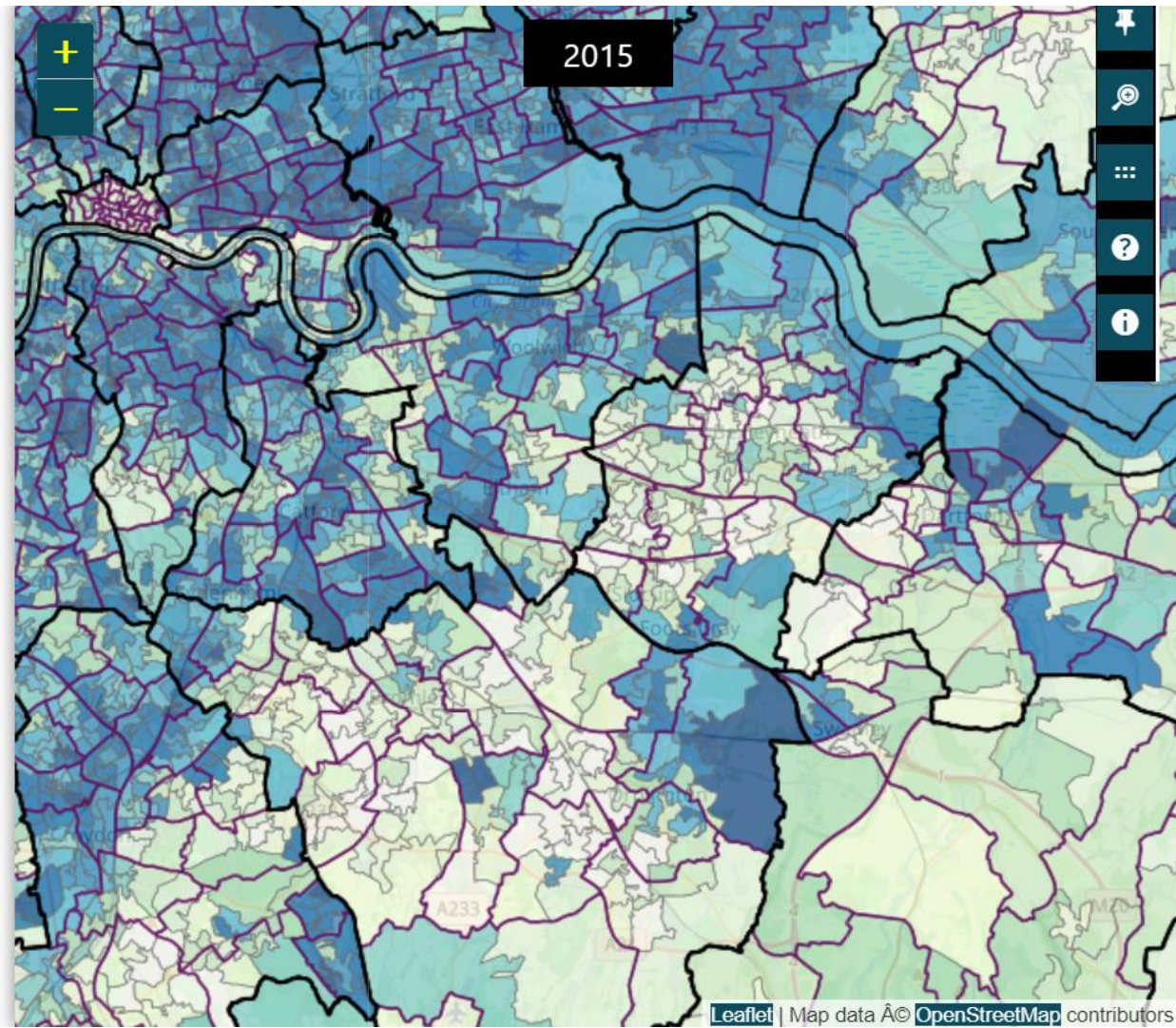
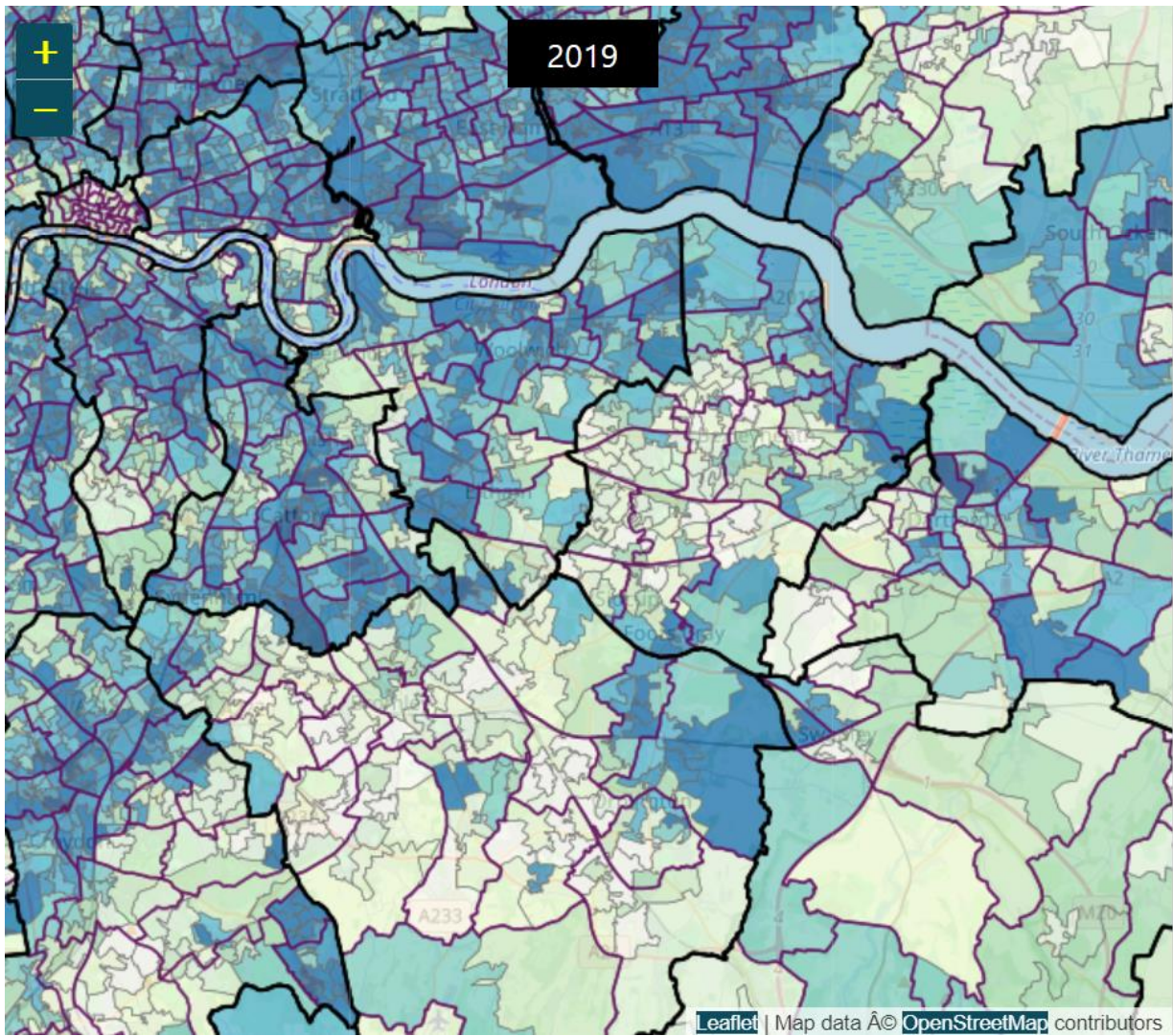
Indices of Deprivation



Bexley is the 8th least deprived Borough in London

It is 190th least deprived in the UK (out of 317 local authority areas)

[See our blog on exploring IMD data for your area](#)



Indices of Multiple Deprivation – [Comparison map of 2015 & 2019](#)

Life expectancy at birth by London borough (2016-18)



Key findings

87 years

the life expectancy for women in Camden, the highest for any London borough.

83.9 years

the life expectancy for men in Westminster, the highest for any London borough.

78 years

the life expectancy for men in Barking and Dagenham, the lowest for any London borough. Women also have the shortest life expectancy in London here, at 82.7 years.

Tags

Gender

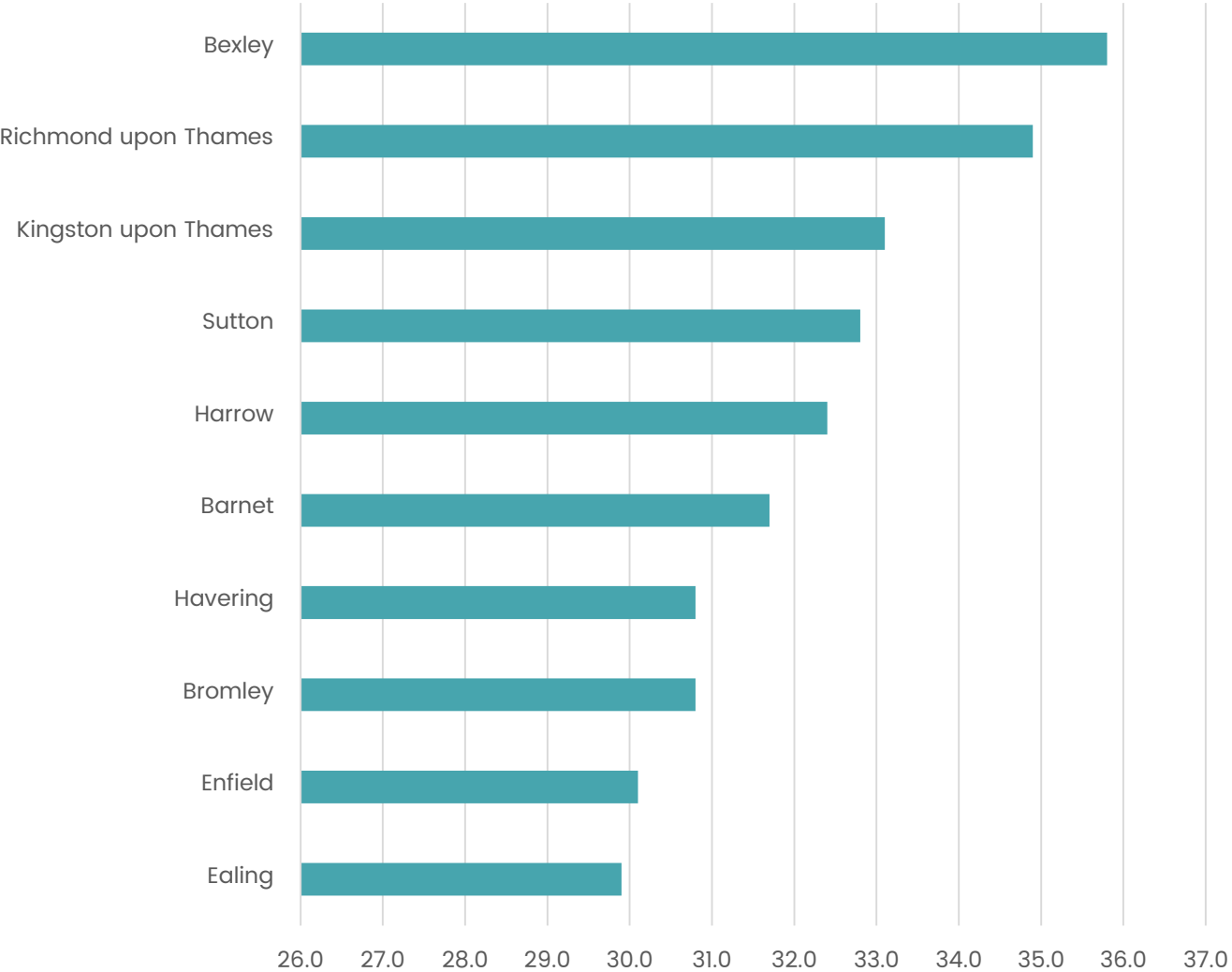
People

Shared Opportunities

Working-age adults

<https://www.trustforlondon.org.uk/data/life-expectancy-borough>

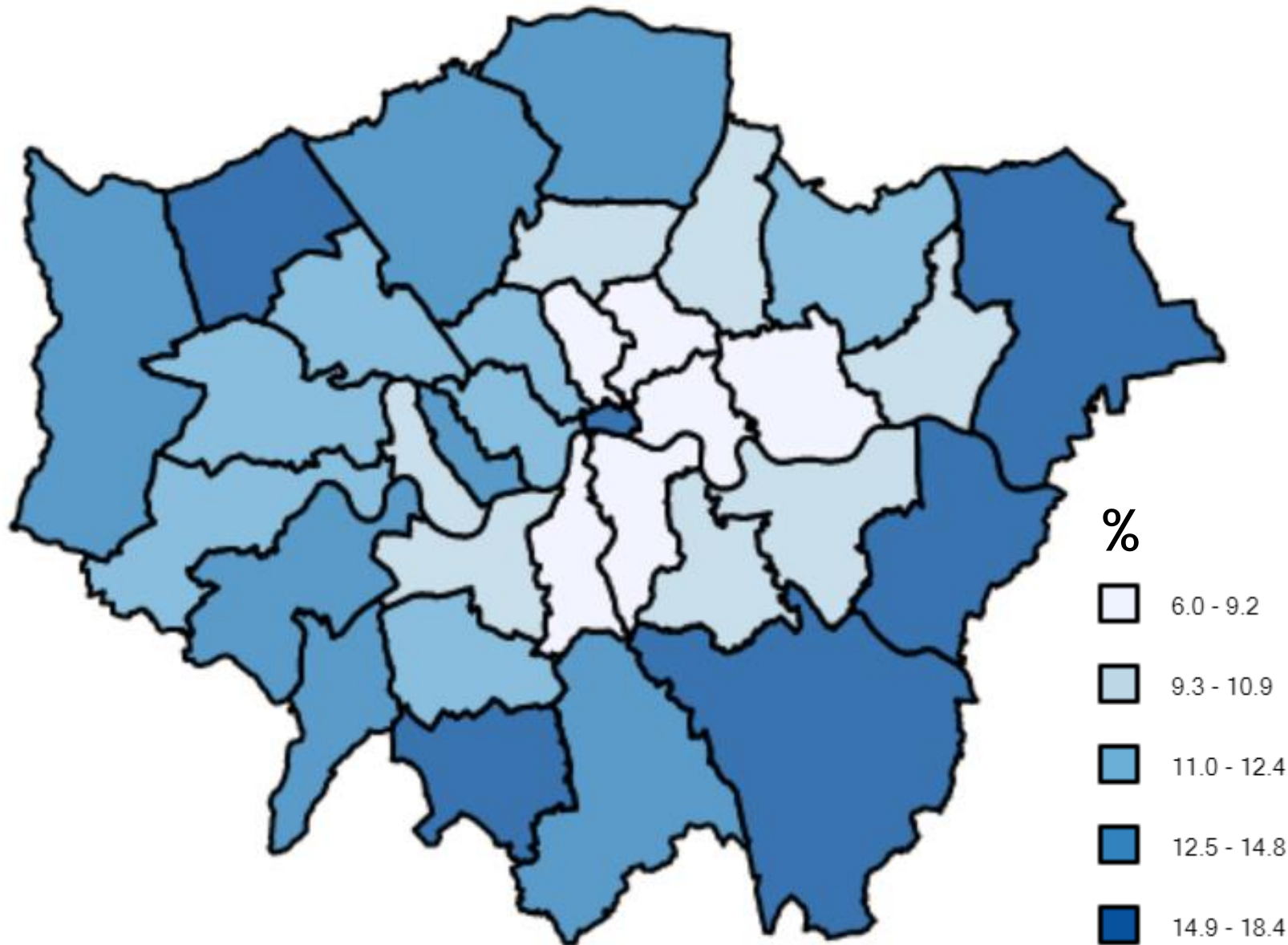
What does Bexley come top in?



% of the population owning their own home outright

[London Data Store – Housing Tenure by Borough](#)

Mystery Map – any guesses?



Hint – links to previous statistic...

% of population over 65 yrs

[London Data Store – Borough Profiles](#)

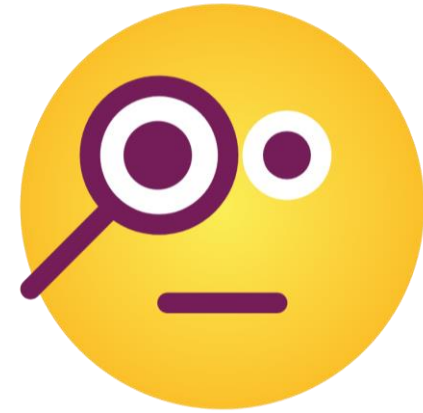
**What surprised
you?**

**And what do
you really want
to know?**

- ✓ Breakout rooms
- ✓ Pairs / small groups
- ✓ 10 mins
- ✓ Make a note of one or two ideas to feedback
- ✓ Whole group feedback



Following a hunch



What happens when you follow a hunch about what you think is happening with your service or activity? And what data sources will you need?



Definition

“a feeling or guess
based on intuition
rather than fact”

Oxford Languages



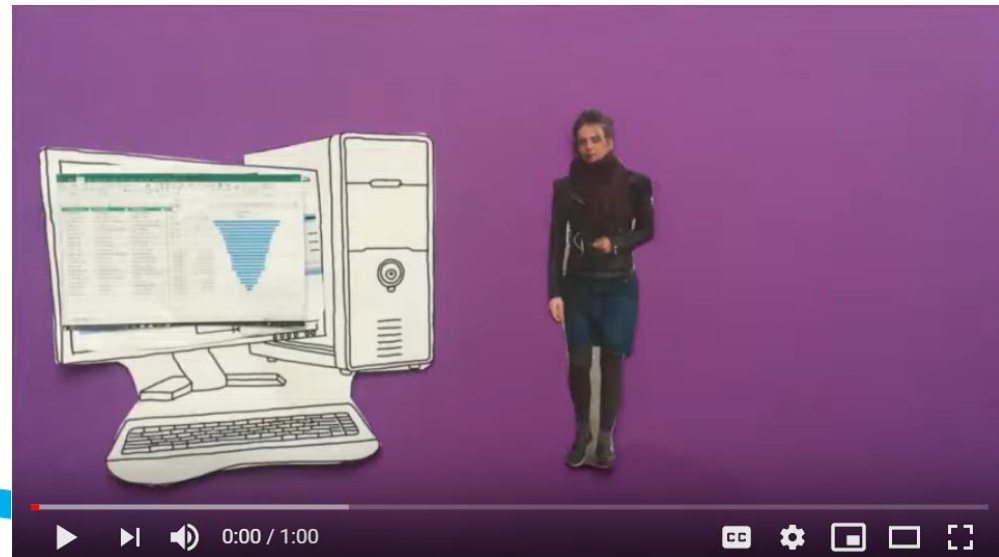
Example: defining a hunch

The demographics of our
volunteers aren't representative
of the boroughs [we work in]



Following a hunch – video exercise..

- ✓ “Young people in the south of the borough aren’t accessing our youth group”
- ✓ What could Alice do next?
- ✓ Discussion in breakout rooms (10 mins) then brief feedback 2 ideas for further exploration

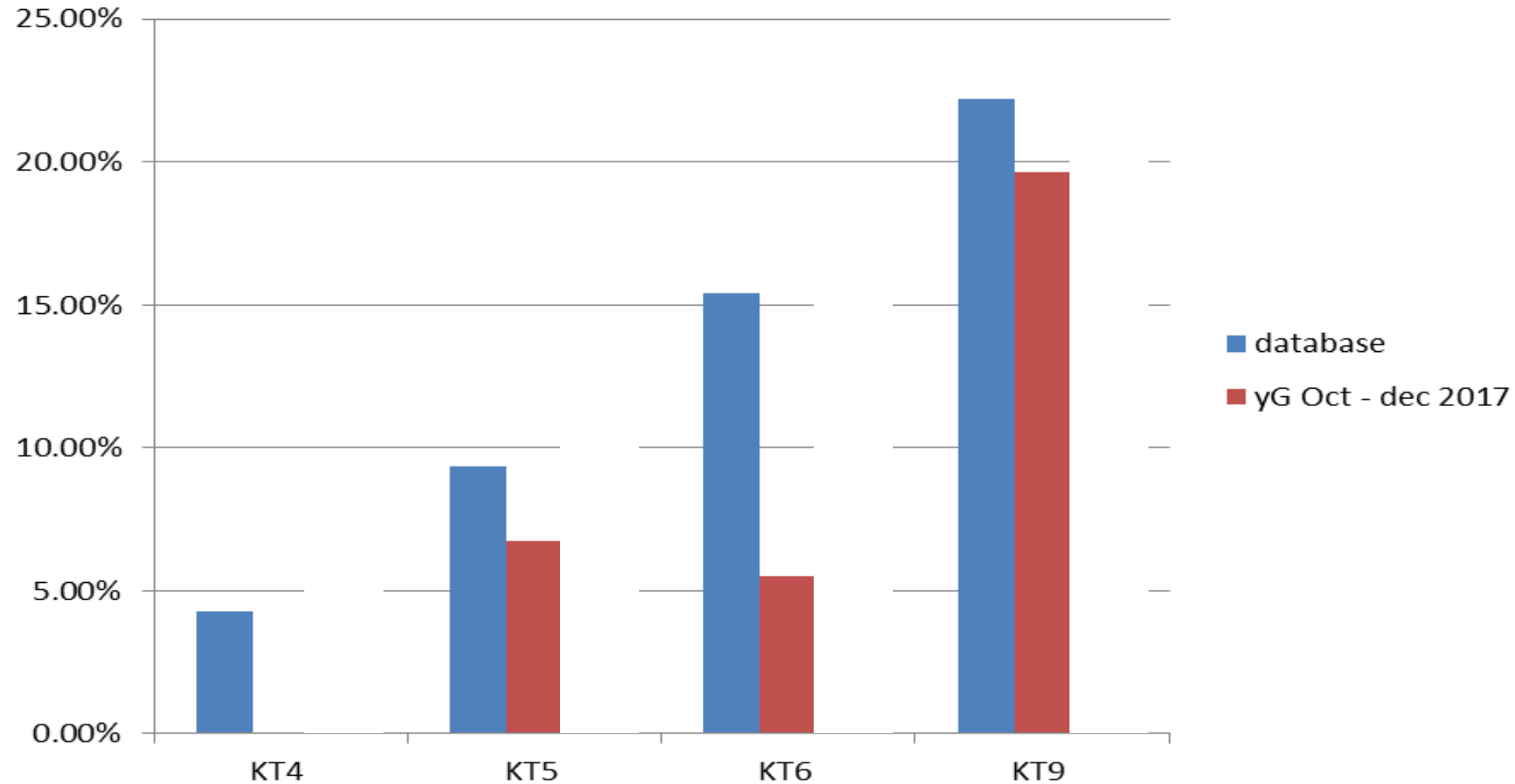


Recap on steps

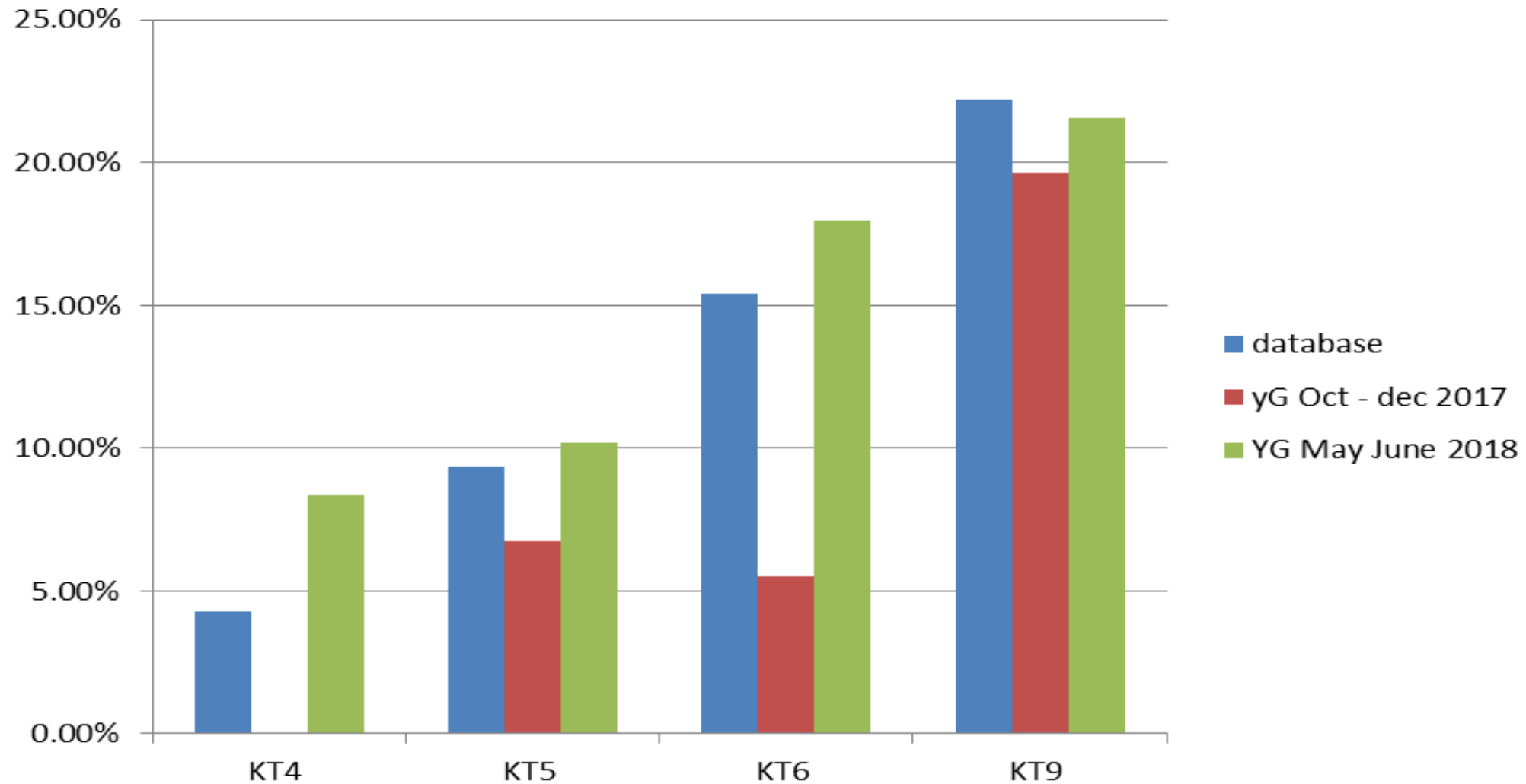
- ✓ Exported current data on numbers of young carers on their database
- ✓ Used Excel to analyse spread across top level post codes (used Split columns and Pivot tables to Count nos & Charts to visualise)
- ✓ Compared against attendance at the Youth club
- ✓ Used to evidence the gap and source funding for the mini bus (using a local Community transport scheme)
- ✓ Compared 6 months later to see the change



12+ Youth group Attendance before transport grant and introduction of minibus service



12+ Youth group Attendance before and after transport grant and introduction of minibus service



Example Superhighways: My Hunch is...

Due to Covid we think our audience has expanded and we're reaching smaller groups previously not accessing digital assistance

Data Needed

Internal data

- Training attendance records
- Support requests & technical enquiries
- One to one support records
- Size of group by income (not previously collected)
- Referrals

External data

- Charity commission data
- 360 Giving data (for non registered by grant funded groups)

Tools Needed

- Eventbrite
- Excel
- Power BI

Skills Needed

- Excel dashboards
- Power BI reports
- Knowledge of how to use Grantnav & 360 Insights
- Mapping & overlaying maps of need & provision

Defining your hunch template

[Download from our website](#)



Break

15 minutes



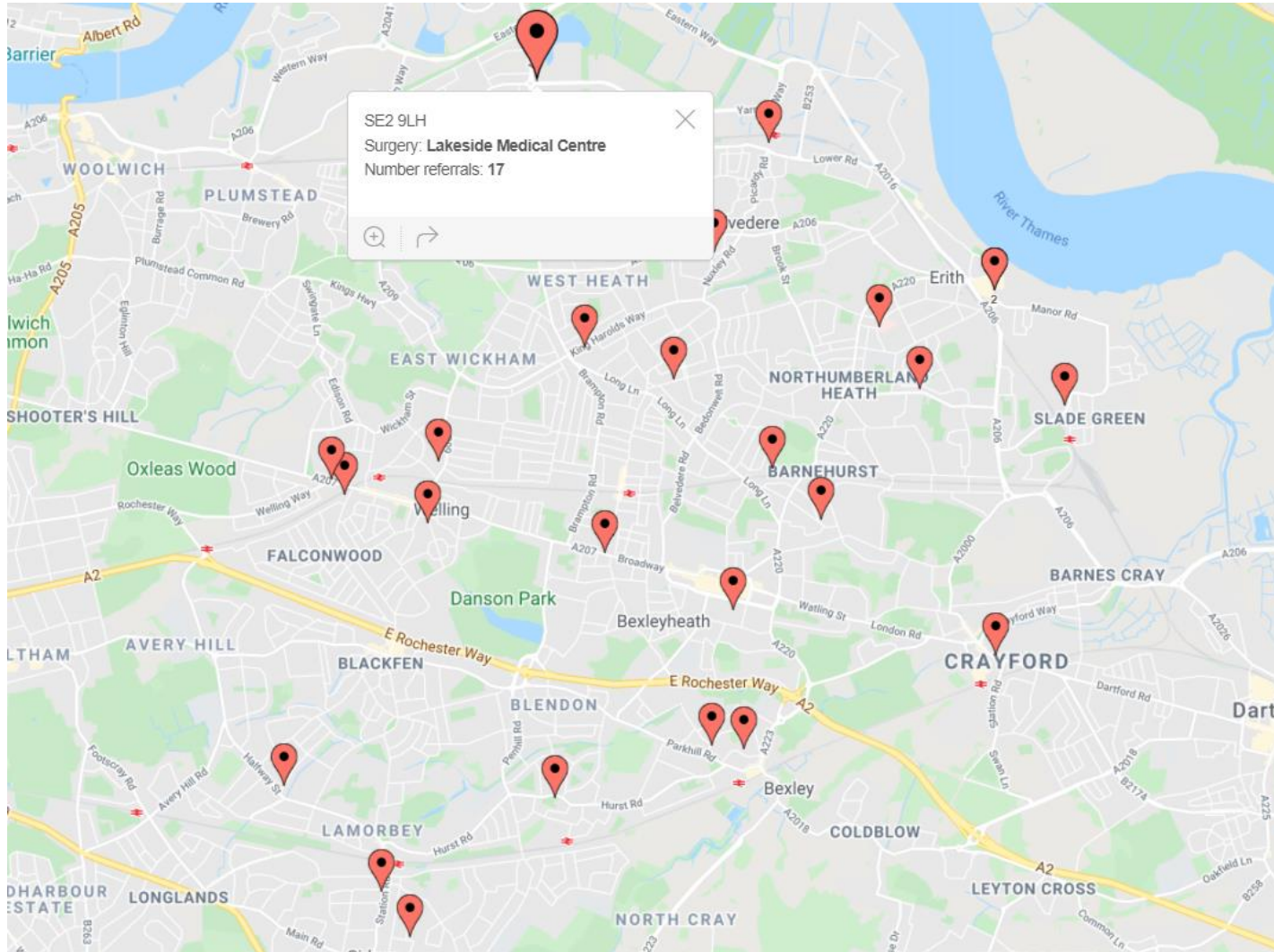
Your internal data

How can you prepare and analyse your own data effectively?

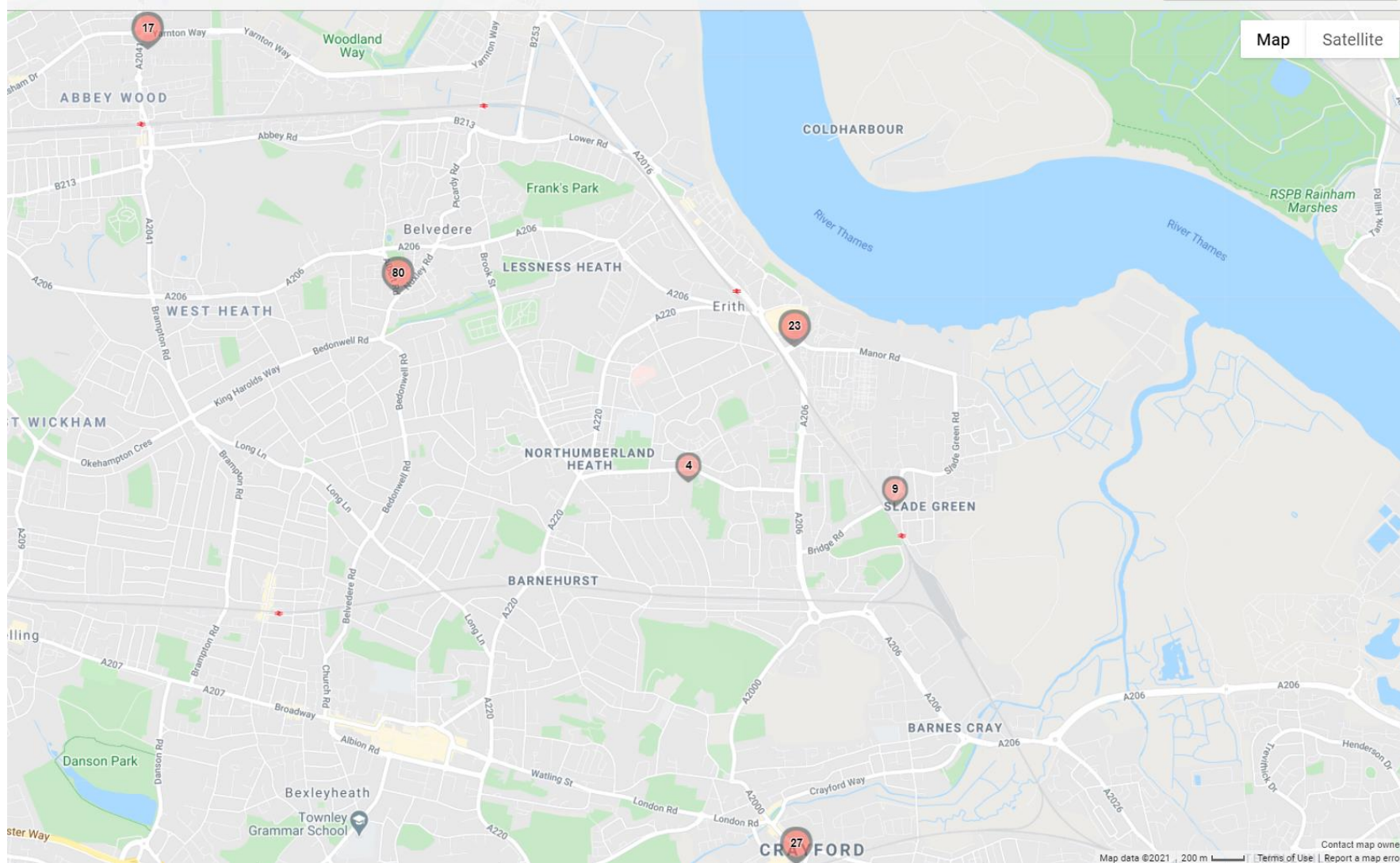




Mapping your postcode data



Referrals via North PCN







External data sources

A useful (though not exhaustive) collection of external data sets





Advice trends

www.citizensadvice.org.uk/about-us/difference-we-make/advice-trends/

Advice trends summarises Citizens Advice service top level statistics. It is aimed at national government departments, regional agencies; third sector organisations concerned with advice or policy and policy researchers.



Ethnicity Facts & Figures

www.ethnicity-facts-figures.service.gov.uk/

Headline figures from each government department detailing ethnic inequalities in the UK.



London Datastore

data.london.gov.uk

The London Datastore is a free and open data-sharing portal where anyone can access data relating to the capital.



London's Poverty Profile

www.trustforlondon.org.uk/data/

Official data from over 100 indicators, revealing patterns in poverty and inequality.



Metropolitan Police

www.met.police.uk/sd/stats-and-data/

Tools to help see what local police forces are doing to combat crime, identify different types of crime and map out different crime stats.



Nomis

www.nomisweb.co.uk

Data from a range of surveys, including the 2011 Census. Enter a location and get a report detailing population characteristics of the local area.



Public Health

fingertips.phe.org.uk/

Rich source of indicators across a range of health and wellbeing themes that has been designed to support JSNA and commissioning to improve health and wellbeing and reduce inequalities



Stat-Xplore

stat-xplore.dwp.gov.uk

Explore Job Centre data, including types of benefits received, and rates that sanctions are applied, by area and individual characteristics.



The London Intelligence

www.centreforlondon.org/project/london-intelligence/

Quarterly publication from the Centre for London, that identifies the changes taking place in the City to help policy makers prepare and plan for the future. Analyses the latest data under five major themes: Demography, Economy, Infrastructure and housing, Society and Health and environment.



UK Data Service

www.ukdataservice.ac.uk

Holds a range of social, economic and population datasets. They also publish 'how to' guides and case studies of effective use of data.



Understanding Society

www.understandingsociety.ac.uk

Search results from academic research using the UK's largest representative household survey.



Ward Profiles and Atlas

data.london.gov.uk/data-set/ward-profiles-and-atlas

Provide a range of demographic and related data for each ward in Greater London. They provide an overview of the population in these small areas including data on population, diversity, households, life expectancy, housing, crime and employment.



Who runs London

www.londoncouncils.gov.uk/who-runs-london

London Councils publish data from London's local elections, London MPs and their constituencies and data looking at 50 years of political control of the boroughs.



YouGov Results

yougov.co.uk/results/

Runs surveys of public opinion on topical issues, with gender, age and social class breakdowns.

London's Poverty Profile

Official data from over 100 indicators, revealing patterns in poverty and inequality.



Populations

KEY FINDINGS

41%

of Londoners are from BME backgrounds.

38%

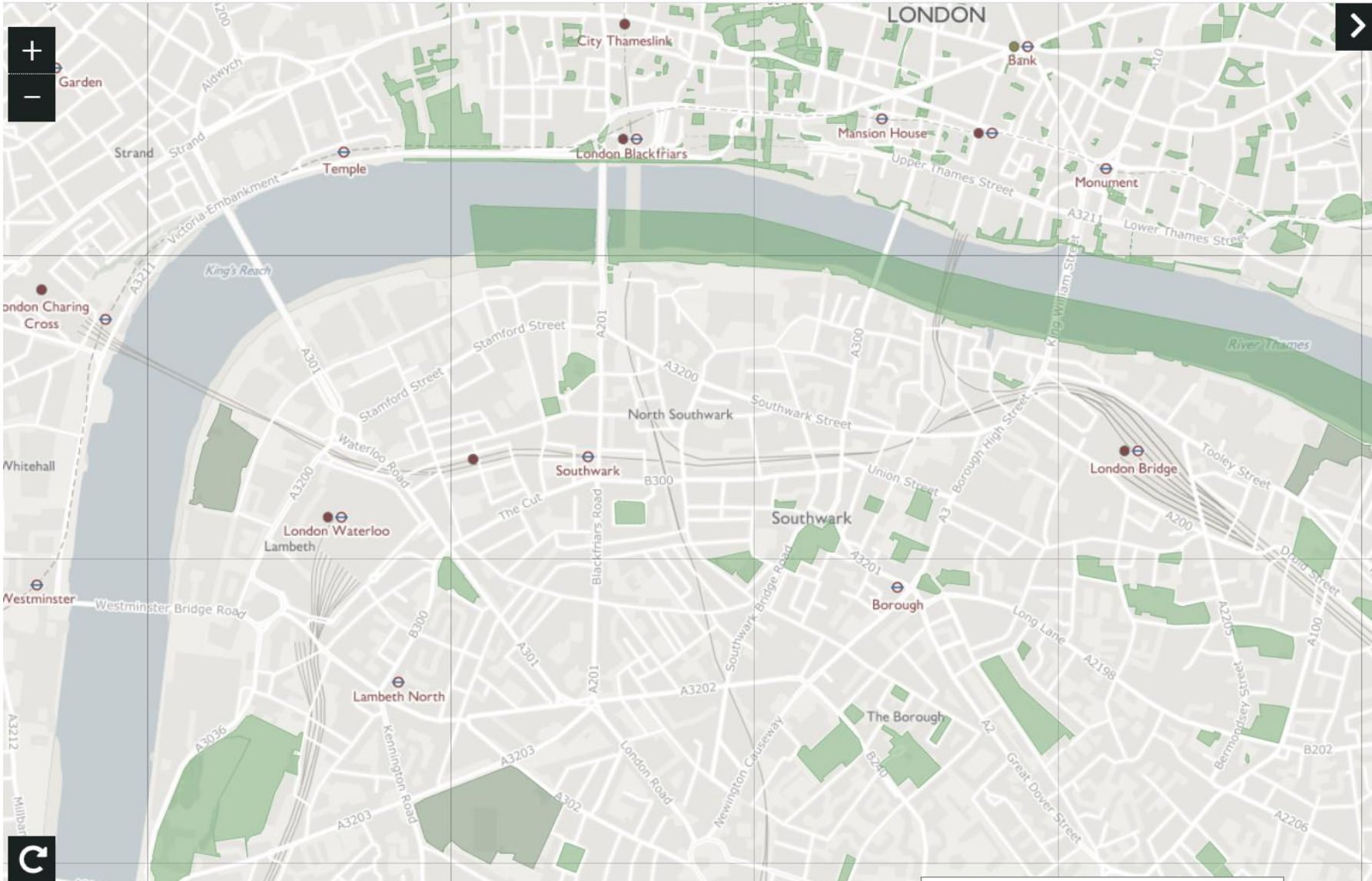
of Londoners from BME backgrounds are in poverty, compared to 21% of White Londoners.



Other useful data sources / resources

- ✓ London Data Store – [London area / borough profiles](#)
- ✓ London Data Store – [Population projections explorer](#)
- ✓ London Data Store – borough / ward [Excel mapping templates](#)
- ✓ Making the most of the London Data Store – [Scenario guides](#)
 - ✓ Understanding the impact of ward level population growth on your services
 - ✓ Targeting services to older people most likely to be socially excluded
 - ✓ Understanding your local area – are volunteers reflective & what about crime stats
- ✓ Mayor of London Survey of Londoners – [Headline findings](#)
- ✓ London Community Response Survey – [Covid-19 weekly results](#)





PLANNING DATA MAP



This open planning data map for London contains the latest spatial data about planning policy. Let us know how you think it might be improved or expanded: idd@london.gov.uk

Search near a location:



Protection



Good Growth



Context

- Designated Open Space ▼
Designated Open Space includes lands designated as Green Belt, Metropolitan Open Land (MOL) and other public open spaces... [Read More](#) i
- Green Belt ▼
- Metropolitan Open land ▼
- Other Open Space ▼
- Site of Importance for Nature Conservation (SINC) ▼
- Sites of Special Scientific Interest (SSSI) ▼
- Conservation Areas ▼
- Ancient Woodland ▼
- Strategic Industrial Location (SIL) ▼
- Locally Significant Industrial Sites (LSIS) ▼
- Flood Risk ▼

Download Planning Data

MAYOR OF LONDON



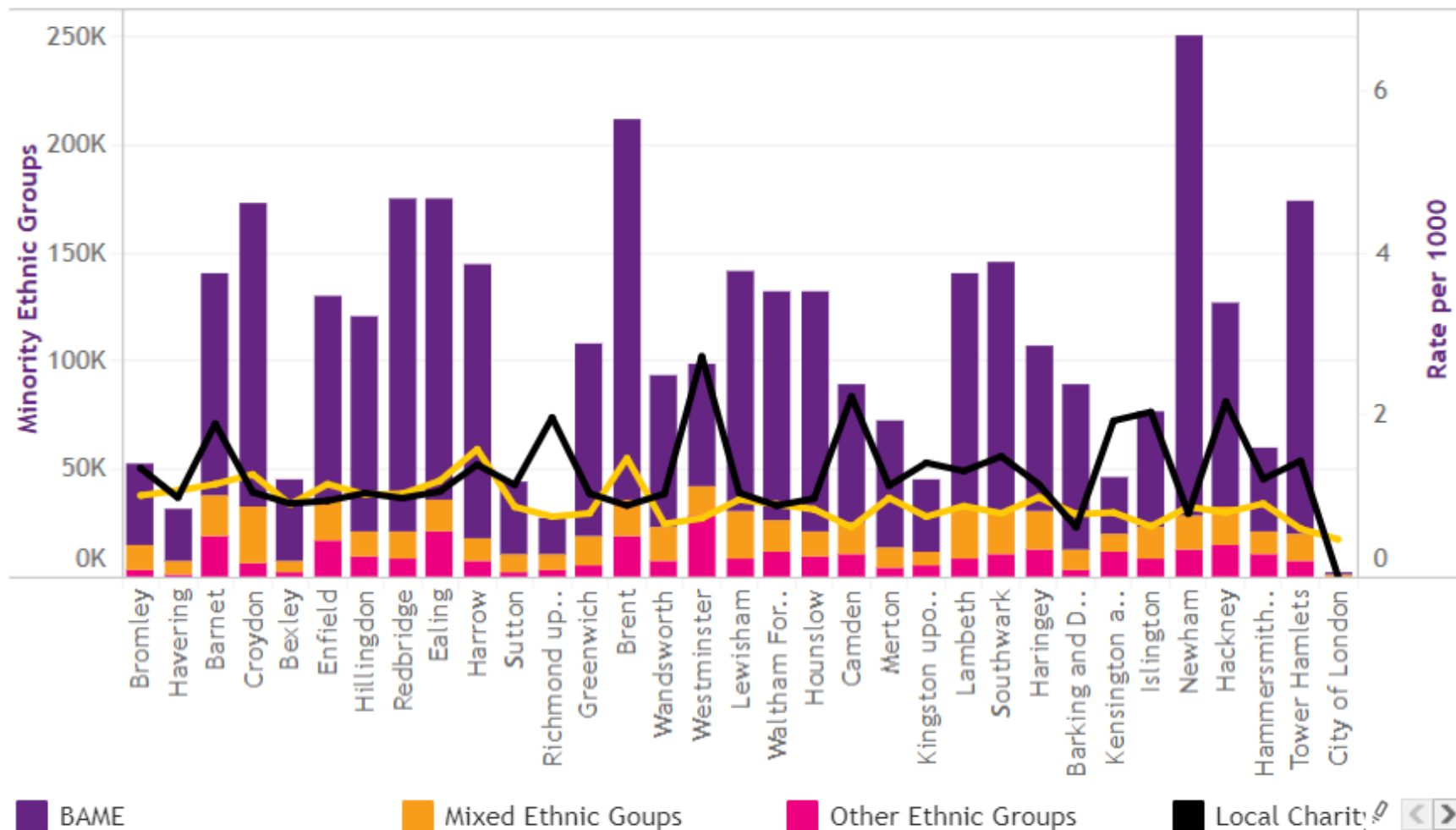
NPC



Interactive Covid-19 data for charities and funders



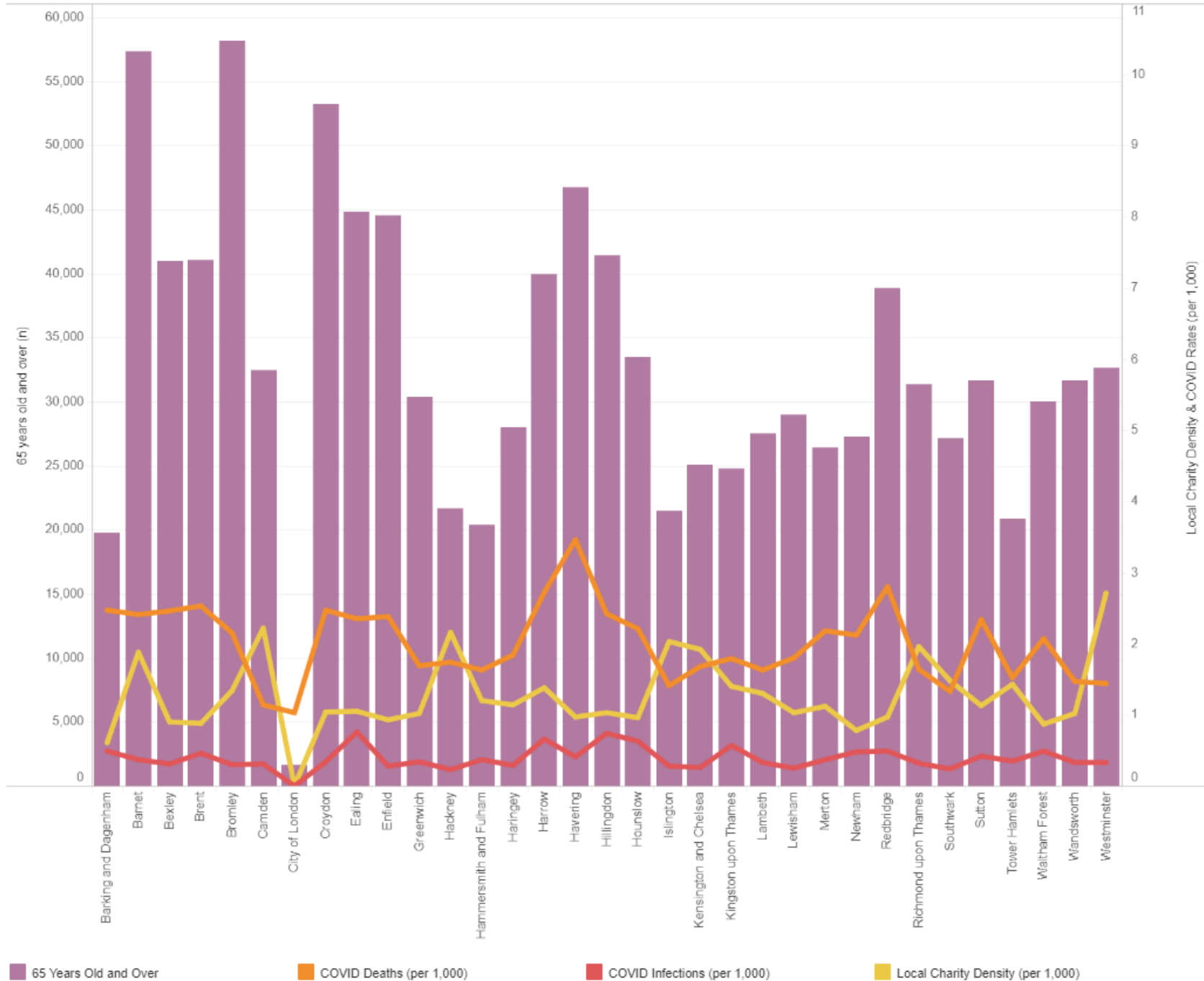
Minority ethnic groups, local charity density and COVID-19 mortality rate for London



Interactive databank – charities and Covid

[NPC dashboard](#)

Elderly population, Local charity density, COVID infections and deaths (per 1,000)



360Giving's GrantNav (& advanced searches)

<https://grantnav.threesixtygiving.org>

Bexley Parents

Search All Fields Locations Recipients Titles & Descriptions

Current Filters Clear All Filters

Districts: Bexley London Boro ✕

Award Year: 2021 ✕ 2020 ✕ 2019 ✕

Tip: If you're looking for a specific phrase, put quotes around it to refine your search. e.g. "youth clubs". For more tips, see [Advanced Search](#)

Filter By [?]

Currency
GBP (25)

Amount Awarded (GBP)
Smallest Largest Apply
£0 - £500 (0)
£500 - £1,000 (0)
£1,000 - £5,000 (7)
[See More](#)

Recipient Region
London (25)

Recipient District [\(clear\)](#)
Glasgow City (56)
Leeds District (40)
City of Edinburgh (38)
[See More](#)

Award Year [\(clear\)](#)
2021 (1)
2020 (10)

Results Sort By: Best Match

[.CSV](#) [.JSON](#) [?]

Total grants	25	Total GBP grants	25
Total funders	10	Total GBP awarded	£944,601
Total recipients	18	Largest GBP award	£150,000
Earliest award date	07 Feb 2019	Smallest GBP award	£1,000
Latest award date	05 Jan 2021	Total Non-GBP grants	0

Grant to Age UK Bexley 30 Apr 2019

Bexley Befriending Cafes

Amount: £36,141
Funder: The Charity of Sir Richard Whittington
Recipient: Age UK Bexley
Region: London
District: Bexley London Boro

Grant to Bexley Snap 15 Nov 2019

We want to subside our minibus, taking disabled children and young people on trips and providing transport for parents to access our clubs.

Amount: £9,258
Funder: Co-operative Group
Recipient: Bexley Snap
Region: London
District: Bexley London Boro

Releasing the Unlimited potential of Bexley's young people through men 24 Oct 2019

Releasing the Unlimited potential of Bexley's young people through men

Amount: £77,500
Funder: The National Lottery Community Fund
Recipient: CRIBS Charitable Trust
Region: London
District: Bexley London Boro



Bexley Facts & Figures

www.bexley.gov.uk/discover-bexley/bexley-facts-and-figures/viewing-data

Acorn

Select the interactive pages to understand the profile of Bexley and any selected wards, hover over the interactive graphs to see specific figures and use the tick-boxes to choose wards. If viewing via a phone or tablet, rotate to landscape mode to see the information in full detail.

Acorn is a segmentation tool based on the characteristics of where people live. It utilises census, credit and lifestyle data into a hierarchical system – 6 overarching Categories, 18 Groups and 62 Types.

Used extensively by private companies for marketing purposes, it is being increasingly used by public sector to understand communities, target services or promotions e.g. identifying isolated older people, promoting fostering etc.

Close to 100,000 household communities (37% of class)
The largest acorn type in B communities category.
Click on a category circle to

Category	Group	Type
1 Affluent Achievers	A. Lavish Lifestyles	1 Exclusive enclaves 2 Metropolitan money 3 Large house luxury 4 Asset rich families 5 Wealthy countryside commuters
	B. Executive Wealth	6 Financially comfortable families 7 Affluent professionals 8 Prosperous suburban families 9 West-of-Middle of owners
	C. Mature Money	10 Settled-off villagers 11 Settled suburban, older people 12 Retired and empty nesters 13 Upsmarket downsizers
2 Rising Prosperity	D. City Sophisticates	14 Townhouse cosmopolitans 15 Younger professionals in smaller flats 16 Metropolitan professionals 17 Socialising young renters
	E. Career Climbers	18 Career driven young families 19 First time buyers in small, modern homes 20 Mixed metropolitan areas
3 Comfortable Communities	F. Countryside Communities	21 Farms and cottages
	G. Successful Suburbs	22 Larger families in rural areas 23 Owner occupiers in small towns and villages
	H. Steady Neighbourhoods	24 Comfortably-off families in modern housing 25 Larger family homes, multi-ethnic areas 26 Semi-professional families, owner occupied neighbourhoods
	I. Comfortable Seniors	27 Suburban semis, conventional attached 28 Owner occupied terraces, average income 29 Established suburbs, older families
	J. Starting Out	30 Older people, neat and tidy neighbourhoods 31 Elderly singles in purpose-built accommodation 32 Educated families in terraces, young children 33 Smaller houses and starter homes
4 Financially Stretched	K. Student Life	34 Student flats and halls of residence 35 Term-time terraces
	L. Modest Means	36 Educated young people on flats and tenements 37 Low cost flats in suburban areas
	M. Striving Families	38 Semi-skilled workers in traditional neighbourhoods 39 Fading owner occupied terraces
	N. Poorer Pensioners	40 High occupancy terraces, many Asian families 41 Labouring semi-rural estates 42 Struggling young families in post-war terraces 43 Families in right-to-buy estates
5 Urban Adversity	O. Young Hardship	44 Post-war estates, limited means 45 Pensioners in social housing, semis and terraces
	P. Struggling Estates	46 Elderly people in social rented flats 47 Low income older people in smaller semi 48 Pensioners and singles in social rented flats
	Q. Difficult Circumstances	49 Young families in low cost private flats 50 Struggling younger people in mixed tenure 51 Young people in small, low cost terraces 52 Poorer families, many children, terraced housing 53 Low income terraces 54 Multi-ethnic, purpose-built estates 55 Deprived and ethnically diverse in flats 56 Low income large families in social rented semis 57 Social rented flats, families and single parents 58 Singles and young families, some receiving benefits 59 Deprived areas and high-rise flats
	6 Not Private Households	Types
	R Not Private Households	60 Active communal population 61 Inactive communal population 62 Business addresses without resident population



JOINT STRATEGIC NEEDS ASSESSMENT

About JSNA Core Dataset Search Tool Accessibility



Core Dataset

Covering a wide range of topics across the Borough of Bexley

[View Topics](#)



Staying Healthy

Topics include..
[Healthy Weight](#)
[Mental Health and Wellbeing](#)



Health Conditions

Topics include..
[Dementia](#)
[Mental Ill Health](#)



Wider Determinants

Topics include..
[Housing](#)
[Crime](#)



Groups & Communities

Topics include..
[Children and young people](#)
[Older people](#)

[Can't find it? Use our search tool >](#)

Updates direct to your inbox

Get news updates on the Bexley JSNA & more

Your email address

[Send](#)



Exploring external data

A quiz to explore data sets, followed by an even deeper dive into relevant sources this afternoon...



London Poverty Profile

- ✓ In pairs
- ✓ Breakout rooms
- ✓ Two questions
- ✓ Google doc
- ✓ It's OK if you only answer the first
- ✓ If you finish early keep exploring!



London Poverty Profile: Quick Question

- ✓ What is the increase in working age Londoners out of work *and* claiming Universal Credit between May 2019 and May 2020?
- ✓ *Navigate to explore by Topic and then choose Work, Worklessness and Benefits. Look at the first Out of Work benefits chart. Tip – click on the columns to see the values..*
- ✓ Answer: Increase from 2.4% to 7.4% (circa a threefold rise, or 5 percentage points increase)





Borough Comparison: Work, Worklessness & Benefits

Employment rate by highest qualification

Employment-related deprivation

English Index of Multiple Deprivation, rebased for London

Hours worked

Households affected by the benefit cap

Households and their work status

Households and their work status by net income quintile

Labour market activity

Out-of-work benefits

Pay per hour

Pay per year

People on out-of-work benefits, by London borough

Poverty and employment status

Poverty and industry categories

Poverty and occupation

Poverty for London's adults, children and pensioners, by family work status

Poverty rates by type of working household

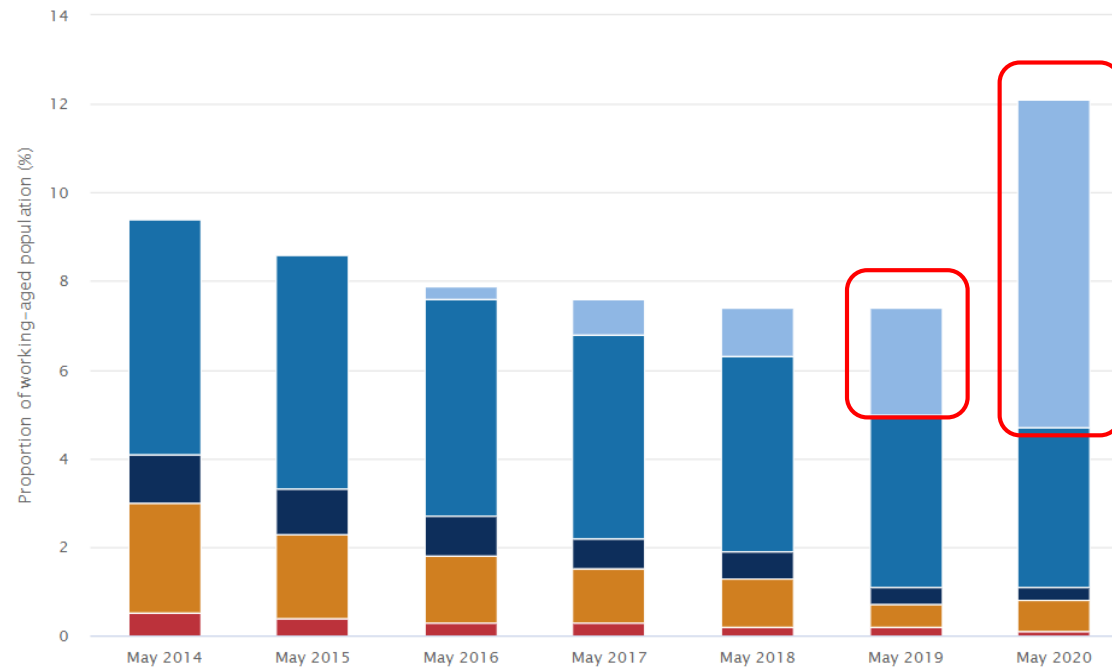
Out-of-work benefits

Proportion of Londoners aged 16-64 on out-of-work benefits by benefit type (2014-2020 (Q2))

Data source and notes

Share ▾

Download chart ▾



- Universal Credit (out-of-work) - London
- Income Support - London
- Pension Credit - London
- ESA and other Incapacity Benefits - London
- Jobseeker's Allowance - London
- Universal Credit (out-of-work) - Rest of England
- Income Support - Rest of England
- Jobseeker's Allowance - Rest of England
- ESA and other Incapacity Benefits - Rest of England
- Pension Credit - Rest of England

London's Poverty Profile 2020

The proportion of working-age Londoners on out-of-work benefits has fallen since 2014, but has risen



London Data Store – Borough Profile

Data Selector
Click on the map icon to switch between borough and ward level. Click on the database symbol to change data and click on the pin icon to filter by borough.

Map
Click on an area to display it's data in the large table.

View report
When you have selected a geographic area, you can click on the "View report" button to generate a report visualising a range of the latest demographic, economic, social and environmental information available for that area.

Metadata
Additional information about a chosen indicator including a link to the source dataset

Large Table
This displays the data of a selected area for every indicator alongside comparisons with London and England. Click on a specific indicator to display it's data on the map, chart and small table.

Legend
Click on the cog icon to change settings such as colours and number of classes.

Small Table
This table displays a selected indicator allowing you to compare between areas.

Chart
Hover over the chart to view a particular value. Click on a bar to display that Borough's data in the large table.

<https://data.london.gov.uk/london-area-profiles>

London Data Store: Quick Question

- ✓ What is the self reported % of Bad and Very Bad Health for Bexley as a borough and for Cray Meadows? Can this difference be explained by the proportion of the population that are 65+?
- ✓ *Select Bexley and then scroll down in the right hand table to find the Health section. Then select the Ward view of the map, select Cray Meadows and then find the corresponding values for Health conditions and Age*
- ✓ Bexley = 4.8% and Cray Meadows = 6% for Bad and Very Bad Health
- ✓ Bexley = 16.37% and Cray Meadows = 15.47% of the population over 65 years

Lunch

1 hour.

See you at
1.30pm



Geo mapping

Evidence needs and spot gaps in service delivery with free and affordable mapping tools



Simplest map creation - Batchgeo...



Paste data sets with postcodes & create a map:

- ✓ Blue existing volunteers
- ✓ Red new client referrals

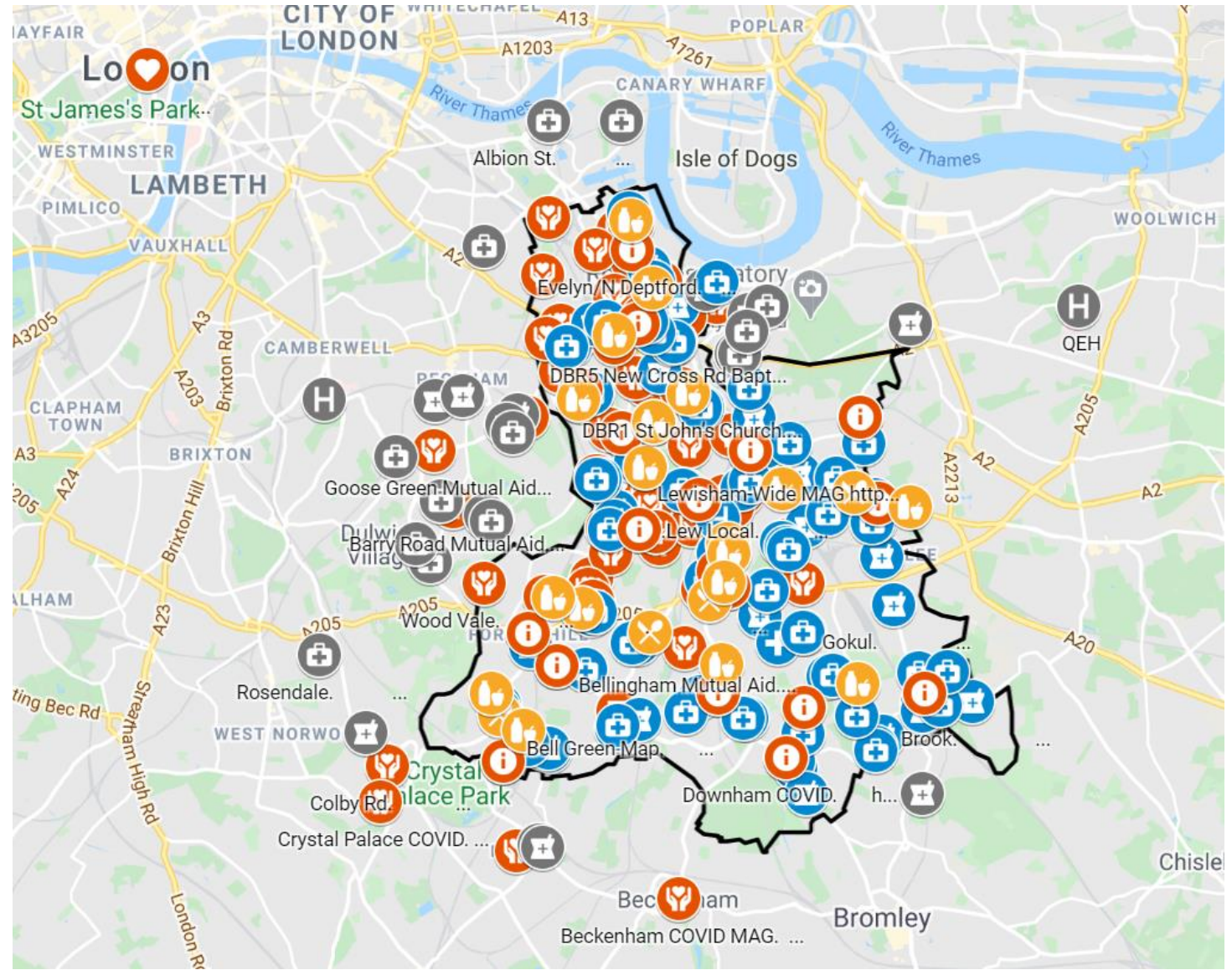


Batchgeo Summary

- ✓ Paste data straight from Excel at www.batchgeo.com
- ✓ Free version – maximum 250 rows of data
- ✓ Choose how to group pins (max 7 categories)
- ✓ Customise design (limited)
- ✓ Limit Zoom in to anonymise data
- ✓ Save Map – Public or Unlisted (Private option in Pro account)
- ✓ Share via link or embed code
- ✓ [Step by step guide](#)



Lewisham Wellbeing Map





CVA ABCD Asset Map



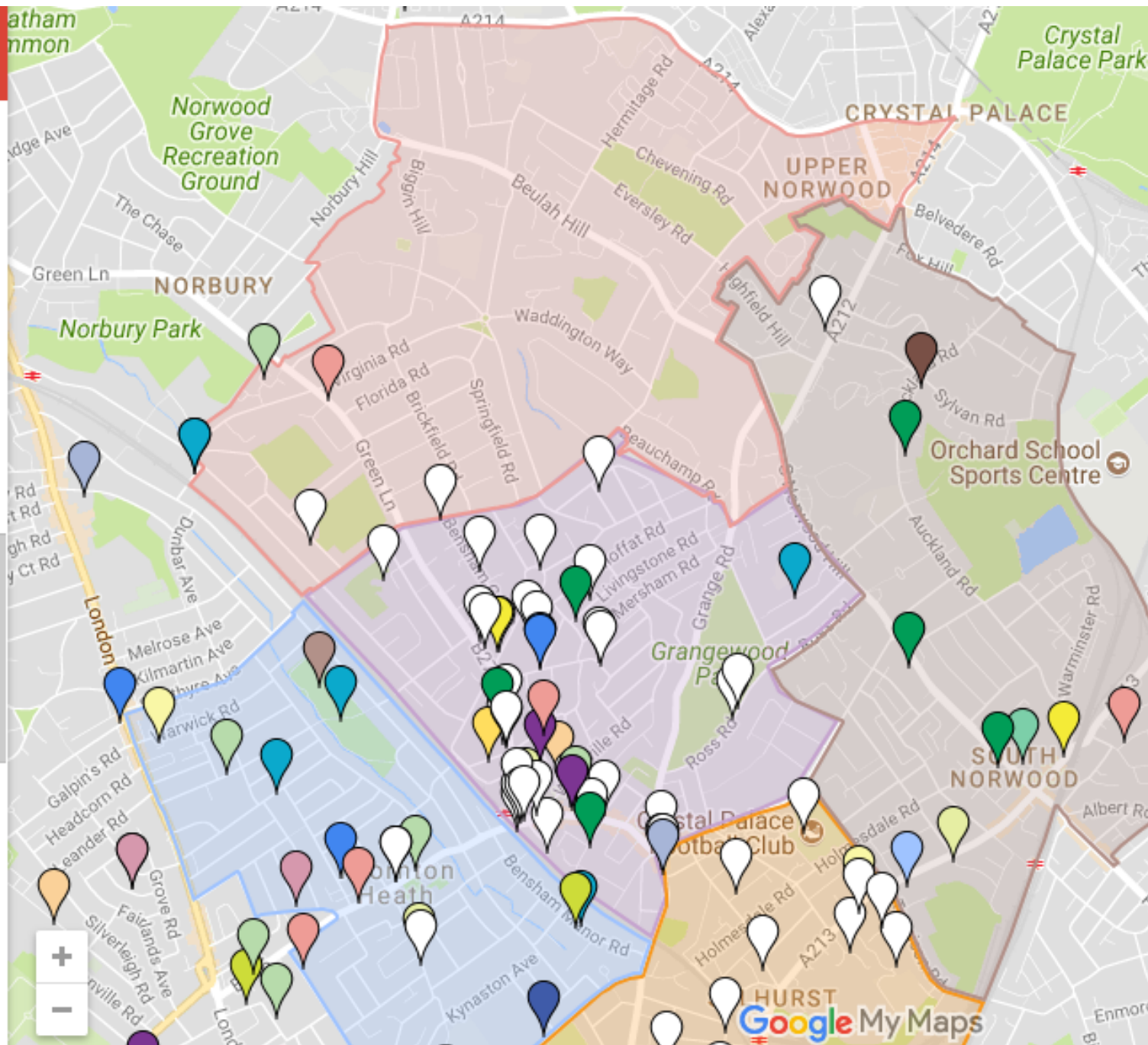
- Cooking
- Computing
- Physical Health
- Children, Parents, Family
- Community
- Dance/ Singing
- Fitness, Sport, Cricket
- Health
- Other / No data



Community based groups



- Family, Community
- Music
- Residents Association
- Other / No data



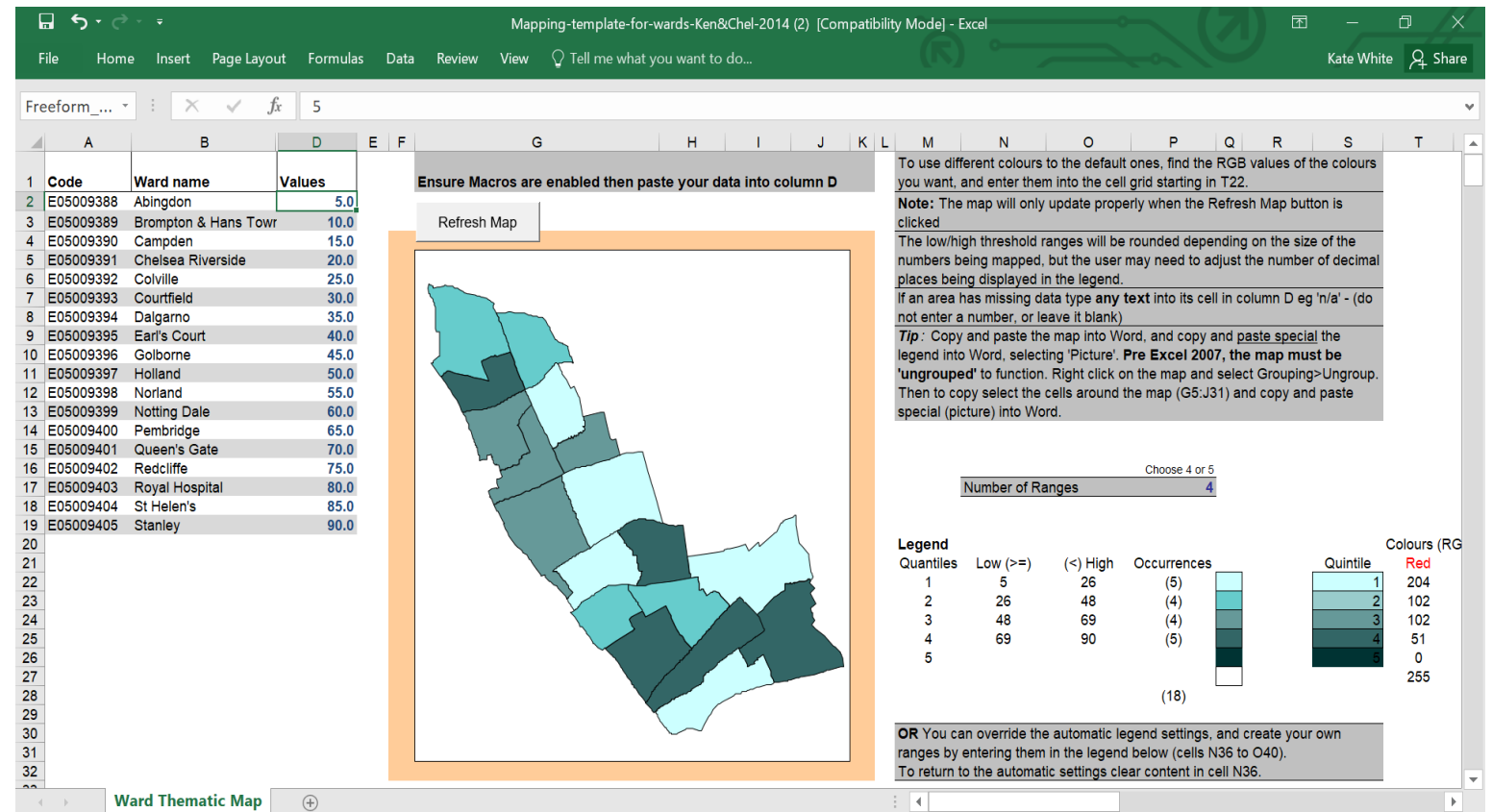
Google MyMaps Summary

- ✓ Import spreadsheet to plot points on a map
- ✓ Add multi-media
- ✓ Customise look and feel – range of icons
- ✓ Add different layers (max 10)
- ✓ Update data table within the map
- ✓ Sharing – keep private, share with specific people, make public
- ✓ [Find out more](#)
- ✓ [Step by step guide](#)



Mapping at Ward or Borough level

- The London Data Store provides [Excel mapping templates](#) for each London Borough as well as for Greater London
- These are useful for simple data which are already organised by ward or borough
- Download and then add your own data to create 'chloropleth' maps



Mapping-template-for-wards-Ken&Chel-2014 (2) [Compatibility Mode] - Excel

Code	Ward name	Values
E05009388	Abingdon	5.0
E05009389	Brompton & Hans Town	10.0
E05009390	Camden	15.0
E05009391	Chelsea Riverside	20.0
E05009392	Colville	25.0
E05009393	Courtfield	30.0
E05009394	Dalgarno	35.0
E05009395	Earl's Court	40.0
E05009396	Golborne	45.0
E05009397	Holland	50.0
E05009398	Norland	55.0
E05009399	Notting Dale	60.0
E05009400	Pembroke	65.0
E05009401	Queen's Gate	70.0
E05009402	Redcliffe	75.0
E05009403	Royal Hospital	80.0
E05009404	St Helen's	85.0
E05009405	Stanley	90.0

Ensure Macros are enabled then paste your data into column D

Refresh Map

To use different colours to the default ones, find the RGB values of the colours you want, and enter them into the cell grid starting in T22.

Note: The map will only update properly when the Refresh Map button is clicked

The low/high threshold ranges will be rounded depending on the size of the numbers being mapped, but the user may need to adjust the number of decimal places being displayed in the legend.

If an area has missing data type any text into its cell in column D eg 'n/a' - (do not enter a number, or leave it blank)

Tip: Copy and paste the map into Word, and copy and paste special the legend into Word, selecting 'Picture'. Pre Excel 2007, the map must be 'ungrouped' to function. Right click on the map and select Grouping>Ungroup. Then to copy select the cells around the map (G5:J31) and copy and paste special (picture) into Word.

Choose 4 or 5

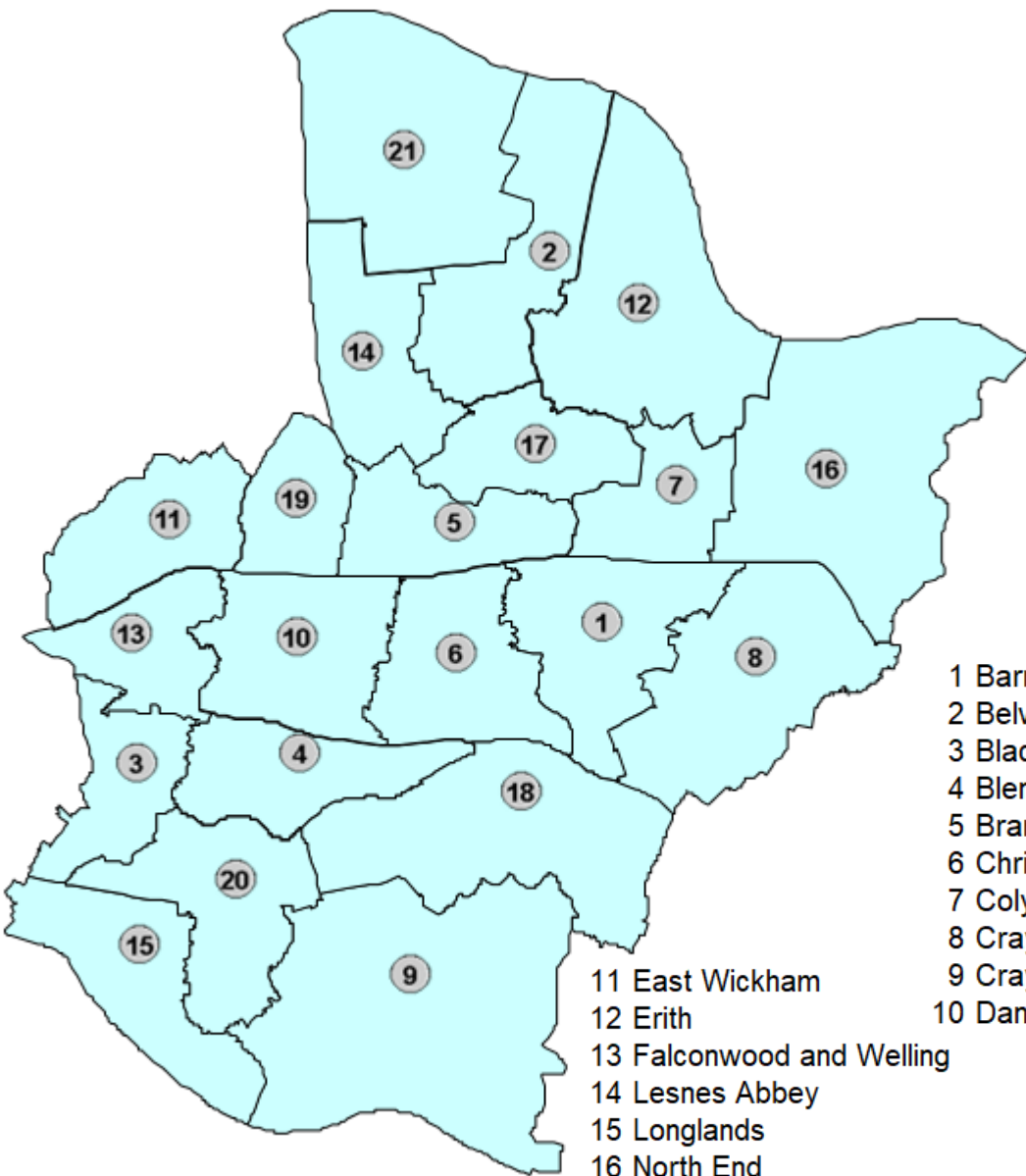
Number of Ranges: 4

Quantiles	Low (>=)	(<) High	Occurrences	Colours (RGB)
1	5	26	(5)	1 204
2	26	48	(4)	2 102
3	48	69	(4)	3 102
4	69	90	(5)	4 51
5			(18)	0 255

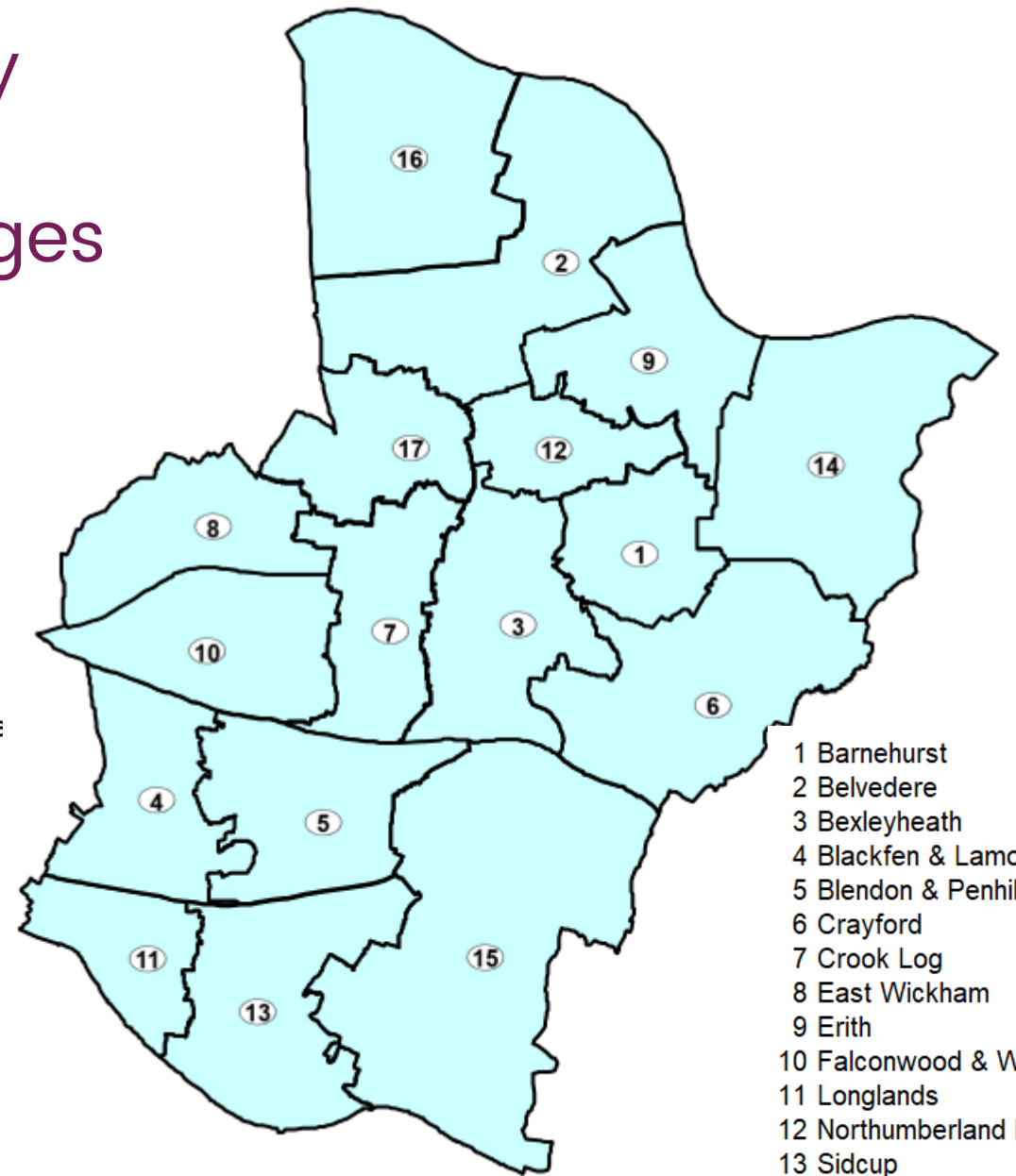
OR You can override the automatic legend settings, and create your own ranges by entering them in the legend below (cells N36 to O40). To return to the automatic settings clear content in cell N36.



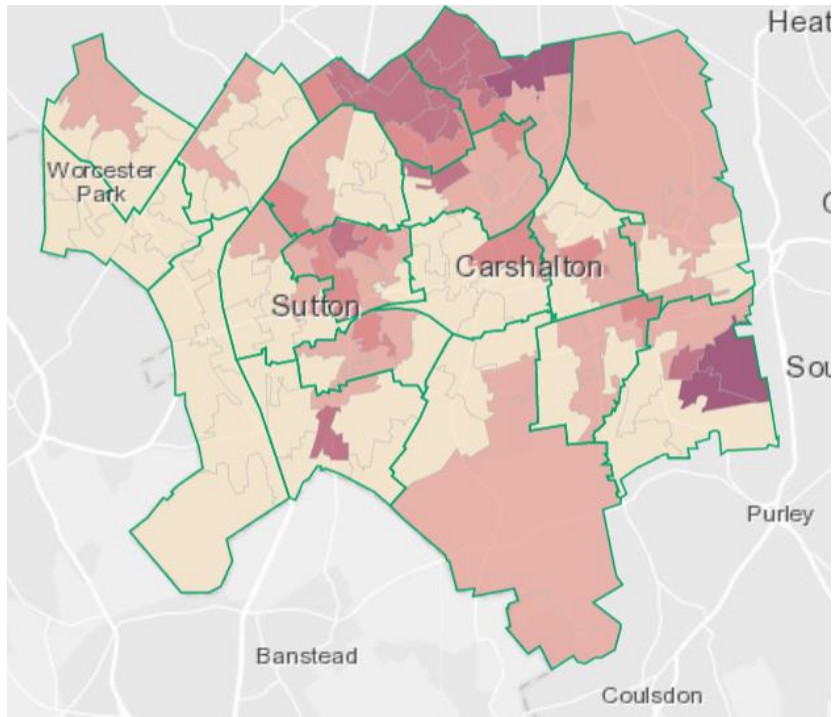
Bexley Ward changes



- 1 Barnehurst
- 2 Belvedere
- 3 Blackfen and Lamorbe
- 4 Blendon and Penhill
- 5 Brampton
- 6 Christchurch
- 7 Colyers
- 8 Crayford
- 9 Cray Meadows
- 10 Danson Park
- 11 East Wickham
- 12 Erith
- 13 Falconwood and Welling
- 14 Lesnes Abbey
- 15 Longlands
- 16 North End
- 17 Northumberland Heath
- 18 St. Mary's
- 19 St. Michael's
- 20 Sidcup
- 21 Thamesmead East

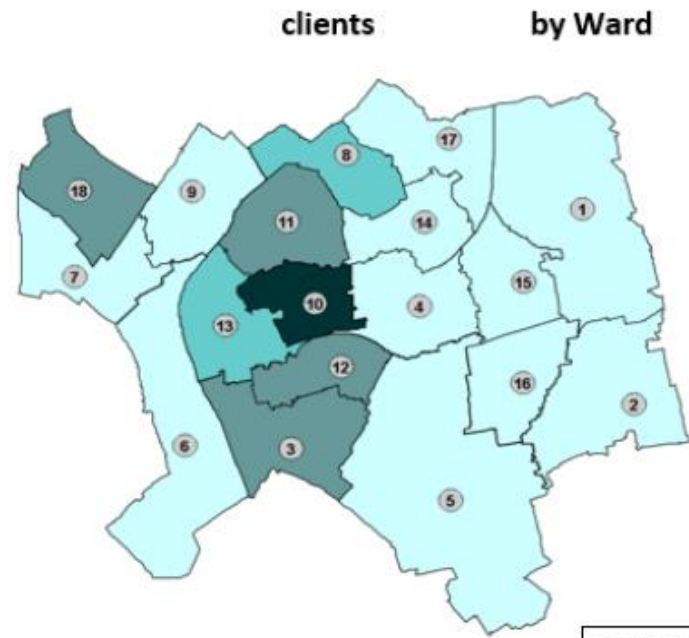


- 1 Barnehurst
- 2 Belvedere
- 3 Bexleyheath
- 4 Blackfen & Lamorbey
- 5 Blendon & Penhill
- 6 Crayford
- 7 Crook Log
- 8 East Wickham
- 9 Erith
- 10 Falconwood & Welling
- 11 Longlands
- 12 Northumberland Heath
- 13 Sidcup
- 14 Slade Green & Northend
- 15 St. Mary's & St. James
- 16 Thamesmead East
- 17 West Heath



Indices of multiple deprivation

What can you see?

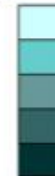


Darker shades represent higher numbers of clients

WARD KEY

- 1 Beddington North
- 2 Beddington South
- 3 Belmont
- 4 Carshalton Central
- 5 Carshalton South and Clockhouse
- 6 Cheam
- 7 Nonsuch
- 8 St. Helier
- 9 Stonecot
- 10 Sutton Central
- 11 Sutton North
- 12 Sutton South
- 13 Sutton West
- 14 The Wrythe
- 15 Wallington North
- 16 Wallington South
- 17 Wandle Valley
- 18 Worcester Park

Low (>=)	(<) High	Occurrences
1	5	(11)
6	10	(4)
11	15	(2)
16	20	(1)
21	25	



Break





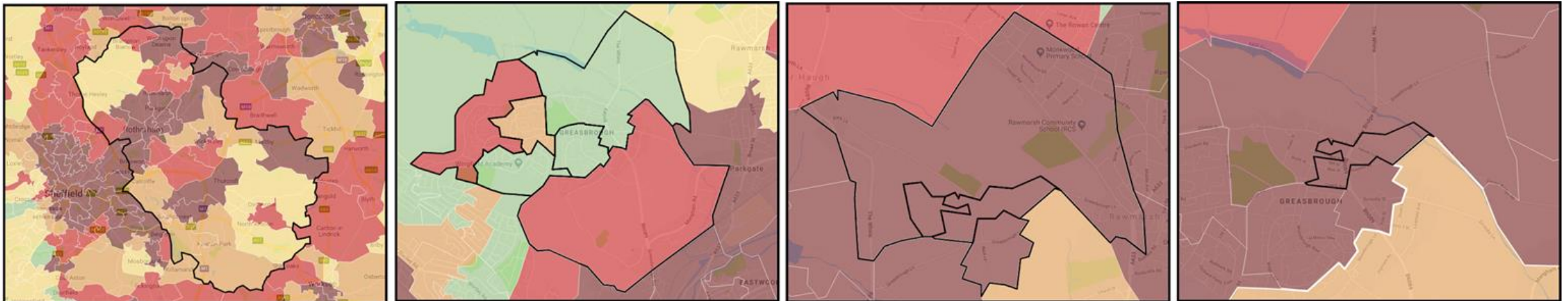
Exploring external data

Deep dive into more data sets



Statistical geographies

- **Output Areas (OAs):** Smallest of the geographies that data is published at and have an average population of about 310 residents
- **Lower Layer Super Output Areas (LSOAs):** Average population of 1500 people or 650 households
- **Middle Layer Super Output Areas (MSOAs):** MSOAs have an average population of 7500 residents or 4000 households
- **Wards** – OAs and LSOAs fit within Wards, MSOAs can straddle Ward boundaries



Local Authority

MSOA

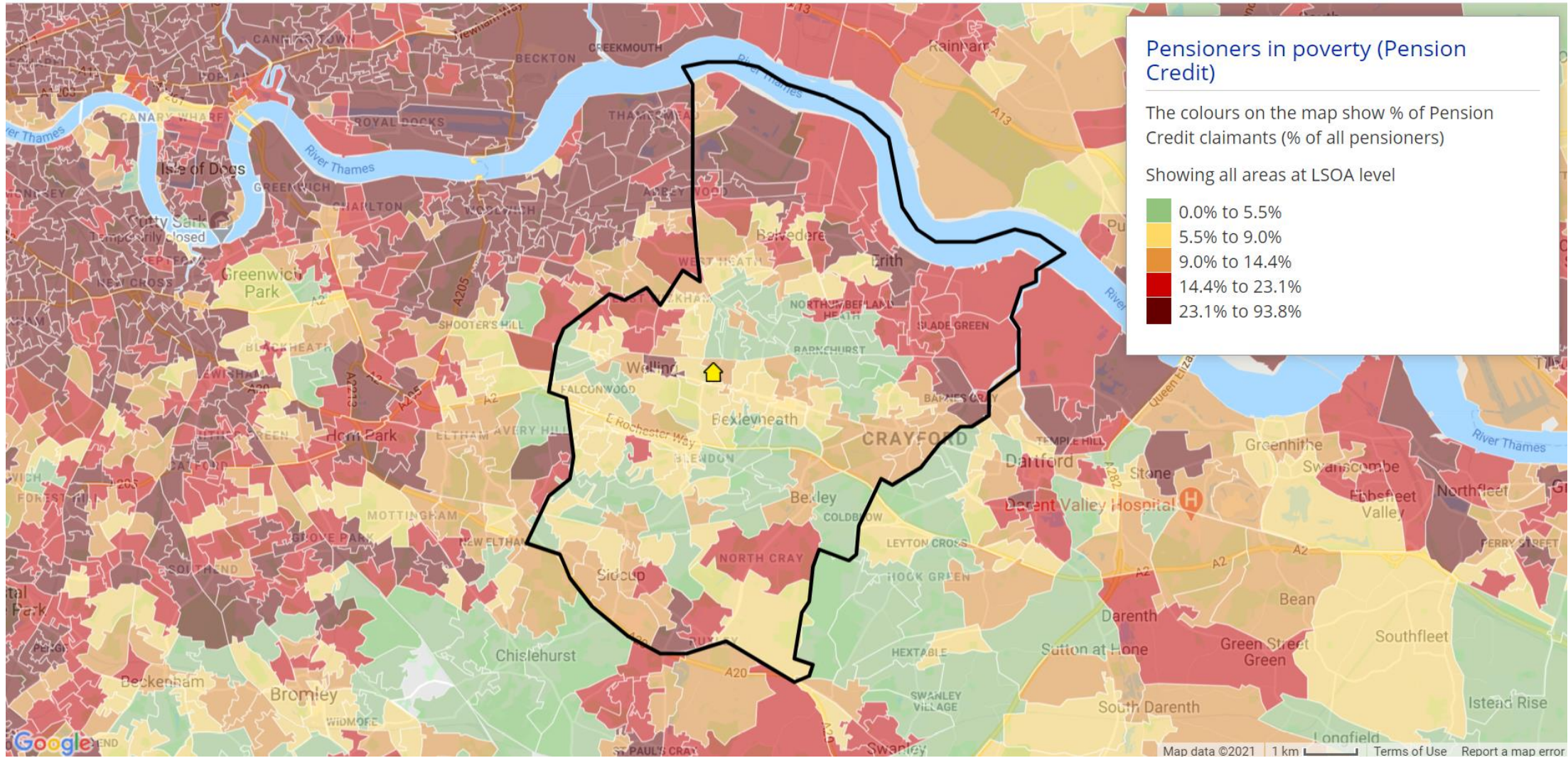
LSOA

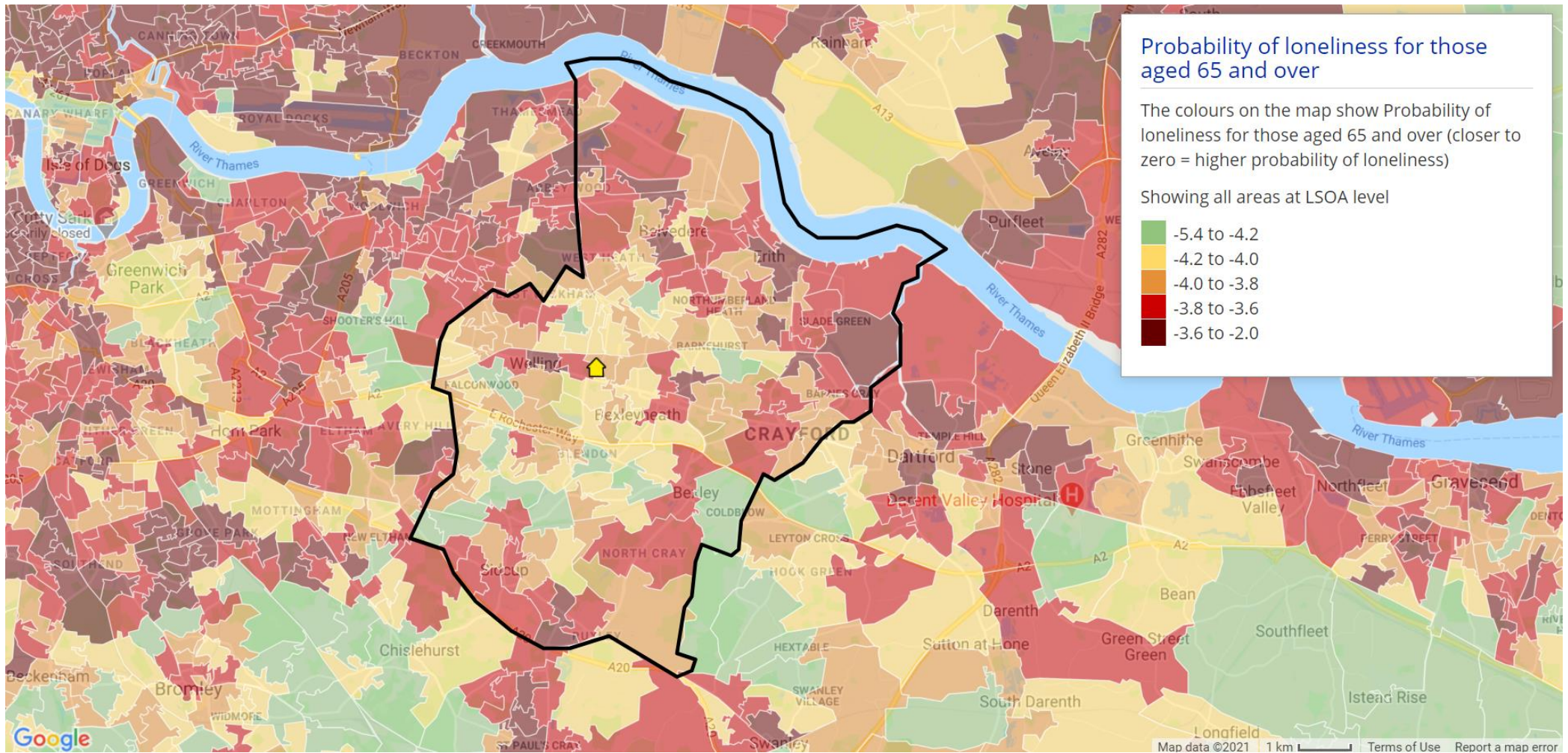
OA

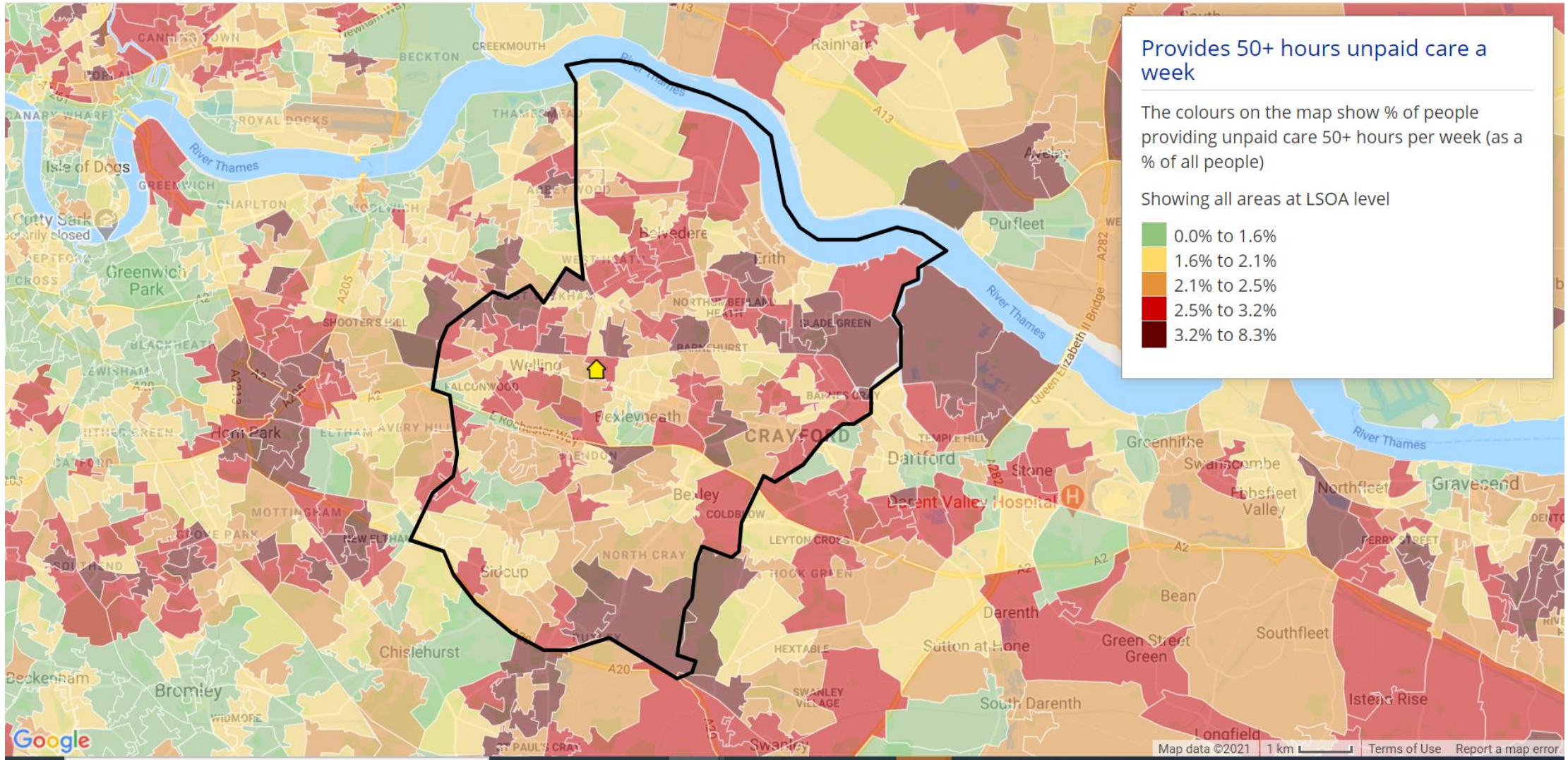
What do you see on these Local Insight maps?

- ✓ In small groups
- ✓ Breakout rooms
- ✓ Two questions about each map
- ✓ Make notes of any questions or insights
- ✓ Google doc





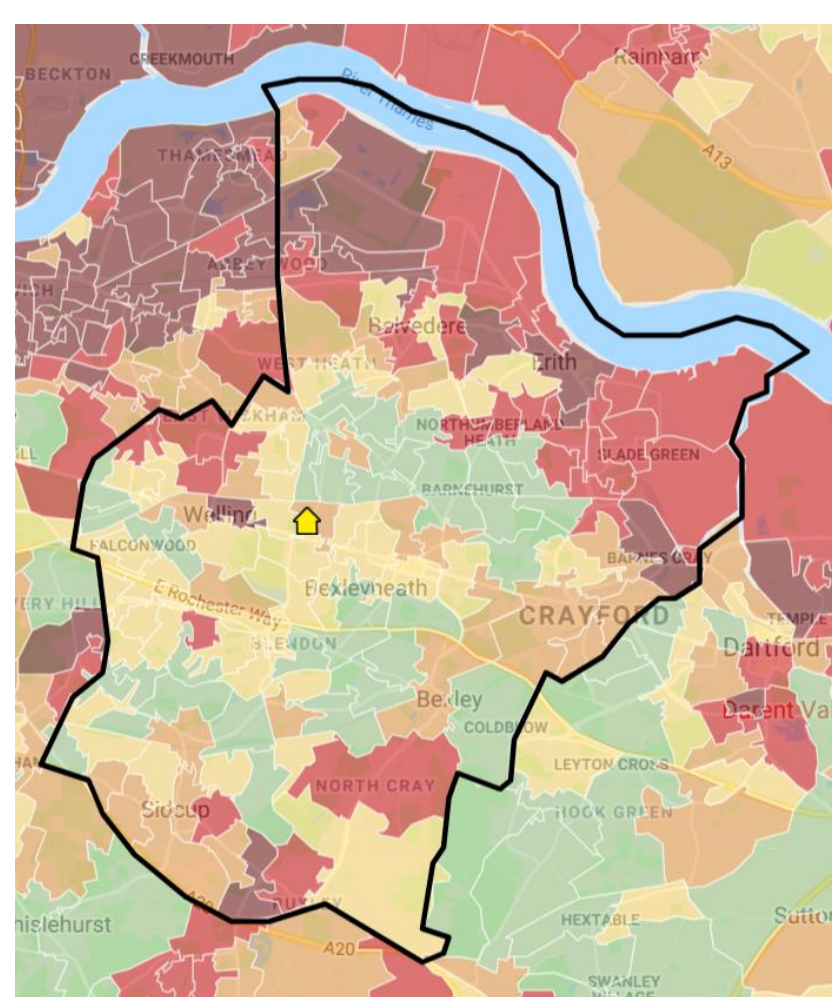




Your next task!

- ✓ Question 1 - Can you spot any trends or correlations between the three maps?
- ✓ Question 2 - What would you like to explore further?
- ✓ Question 3 - Read the information about the data sources (document in Chat) - What questions do these raise?

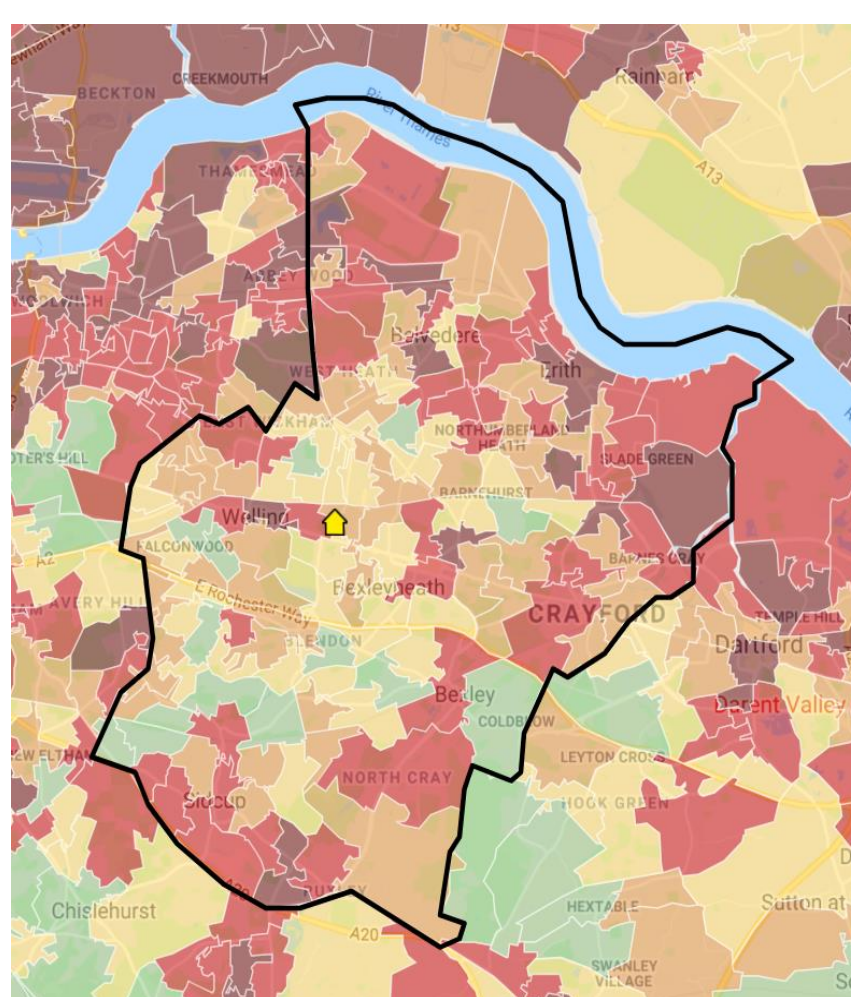
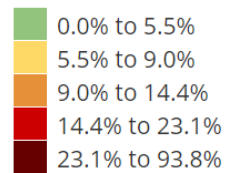




Pensioners in poverty (Pension Credit)

The colours on the map show % of Pension Credit claimants (% of all pensioners)

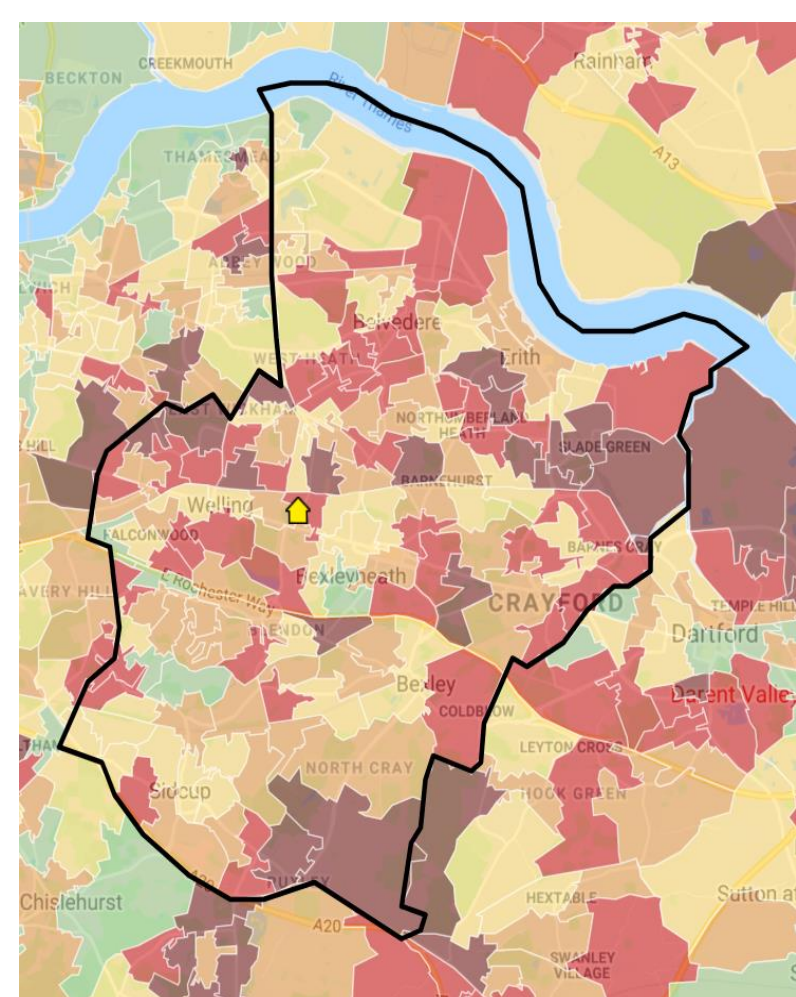
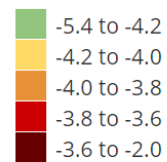
Showing all areas at LSOA level



Probability of loneliness for those aged 65 and over

The colours on the map show Probability of loneliness for those aged 65 and over (closer to zero = higher probability of loneliness)

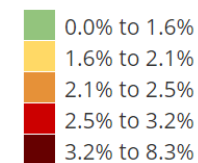
Showing all areas at LSOA level



Provides 50+ hours unpaid care a week

The colours on the map show % of people providing unpaid care 50+ hours per week (as a % of all people)

Showing all areas at LSOA level



Considerations & best practice for working with external data

What did you
discover?
Quick re-cap

<https://www.menti.com/mnhnrecf6b>





Your time. What do you want to do?

Feel free to explore a data source that you need in your work or ask us any questions. Or define your own hunch [using our template](#)



Next steps

- ✓ [Sign up](#) for Superhighways / Datawise London e-news
- ✓ [Submit](#) your data challenge
- ✓ [Book on](#) summer training in Bexley
 - ✓ Data Essentials
 - ✓ Excel bite-sized programme 1-5
 - ✓ Excel for monitoring and evaluating
- ✓ [Book an Ask the Expert](#) advice one-to-one



Checkout





Thank you for listening

ALICE LINELL, KATE WHITE, SORREL PARSONS

info@superhighways.org.uk

[@SuperhighwaysUK](https://twitter.com/SuperhighwaysUK)

#DatawiseLondon

