

FUNDED BY TRUST FOR LONDON

# Using external data sources to inform your work



Brought to you by Datawise London  
and Superhighways

# Using external data sets to inform our work

- ✓ Finding out about useful data sets
- ✓ Gaining confidence in exploring and using them
- ✓ Intro to London Poverty Profile, London Data Store, Local Insights
- ✓ Other useful data sets
- ✓ Considerations when using external data?



# Quick random quiz...

- 1) What is the total population of Wandsworth in 2021? 288k, 324k or 362k
- 2) Where does Wandsworth rank in the Indices of Multiple Deprivation in London? 11<sup>th</sup>, 14<sup>th</sup> or 20<sup>th</sup>
- 3) What's the difference in life expectancy and healthy life expectancy for women in Wandsworth? Circa 5 years, 12 years or 16 years

# What are your answers?

- 1) What is the total population of Wandsworth? 280k, **335k**, 360k
- 2) Where does Wandsworth rank in the Indices of Multiple Deprivation in London? 5<sup>th</sup>, **11<sup>th</sup>**, 14<sup>th</sup>
- 3) What's the difference in life expectancy and healthy life expectancy for women in Wandsworth? Circa 5 years, 12 years or **16 years**

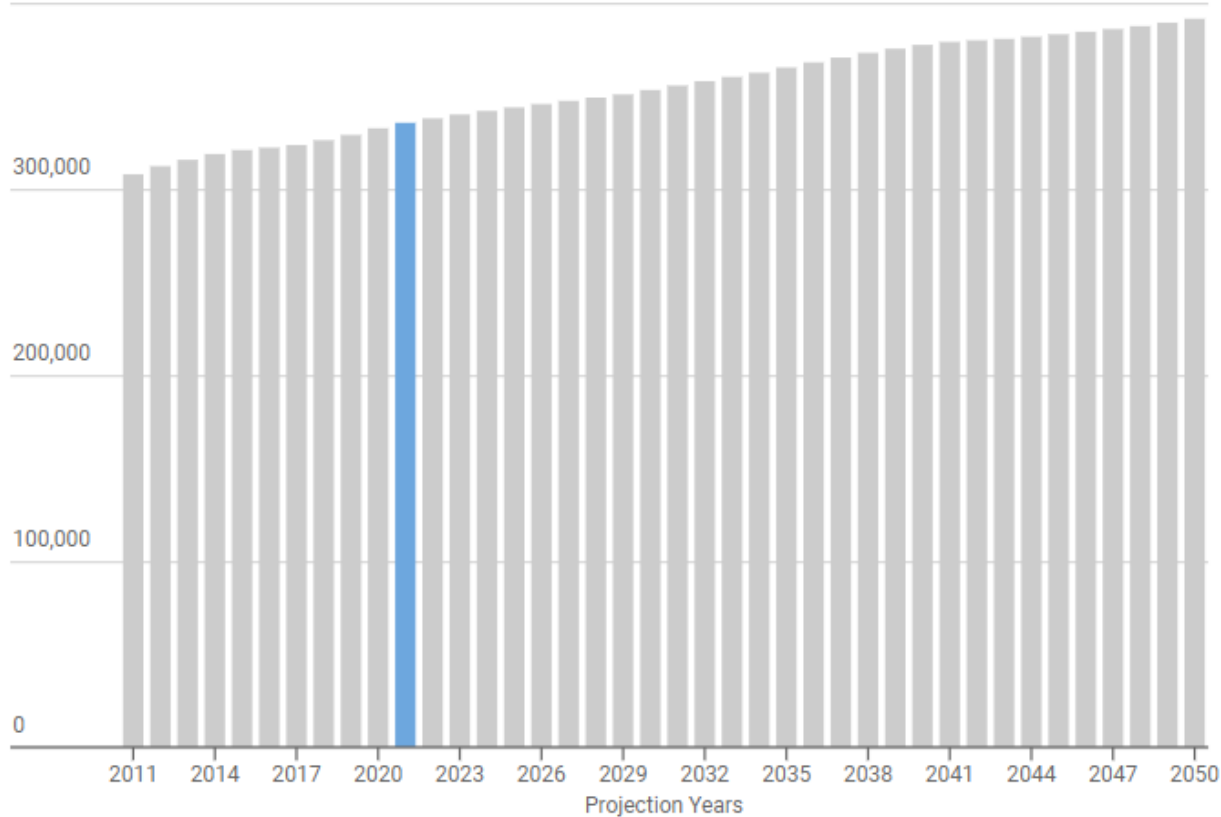
# Population Projections Explorer

<https://maps.london.gov.uk/population-projections>

## Population Projection: Wandsworth

Housing Led, Borough Total, All persons, Both Sexes, 0 - 90

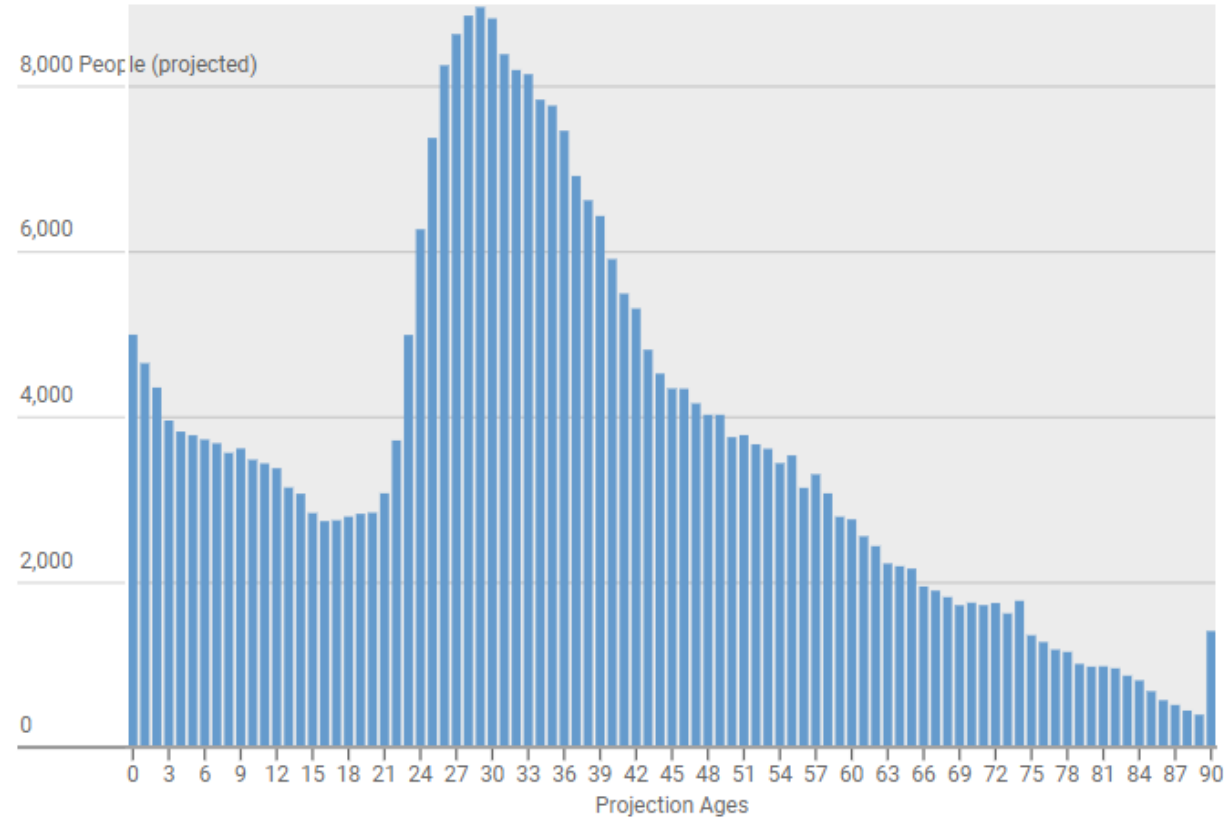
400,000 People (projected)



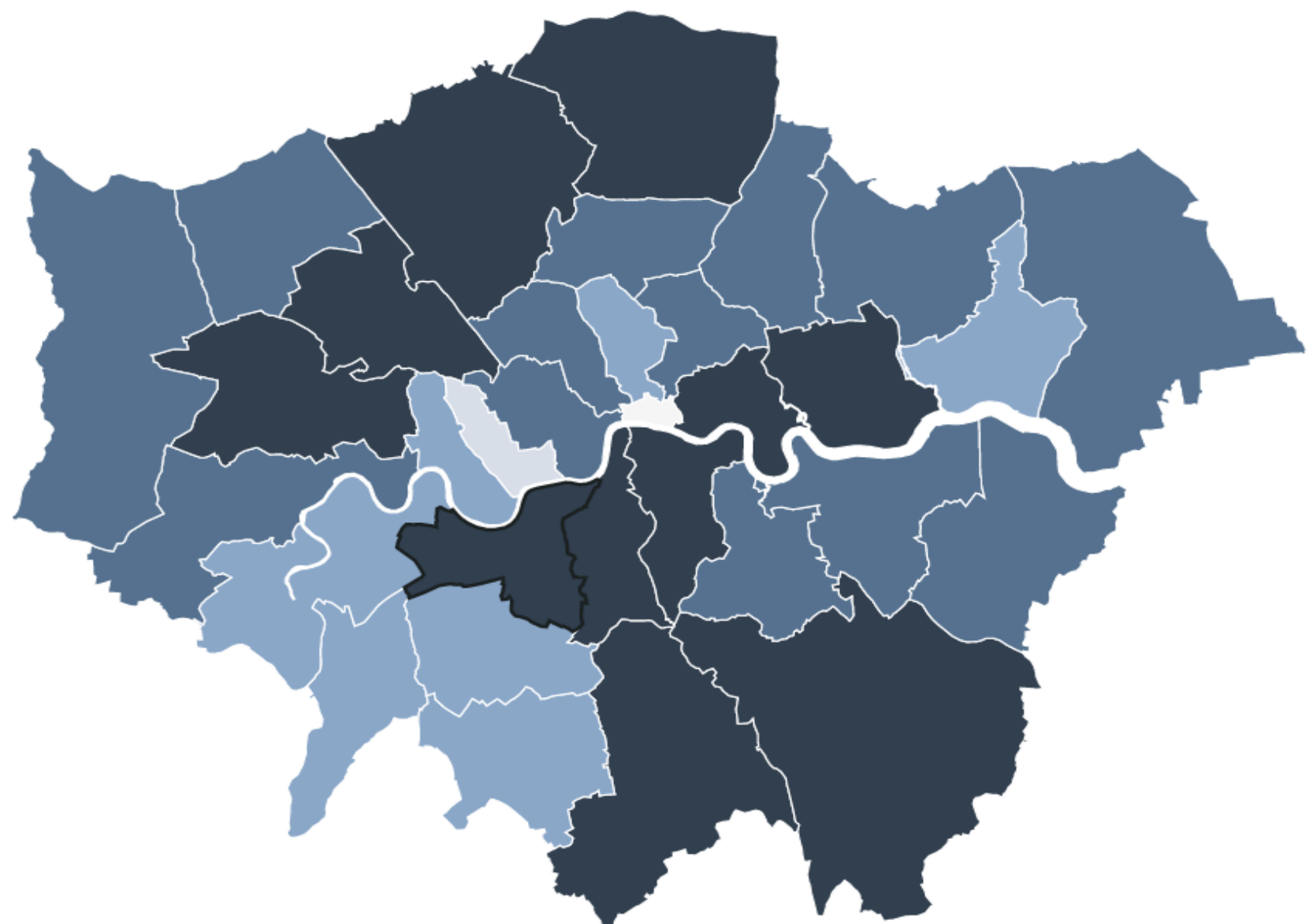
Source: GLA Demography 2018 Based Population Projections  
Graphic by GLA City Intelligence

## Population by Age: Wandsworth

Housing Led, 2021, Borough Total, All persons, Both Sexes



Source: GLA Demography 2018 Based Population Projections  
Graphic by GLA City Intelligence

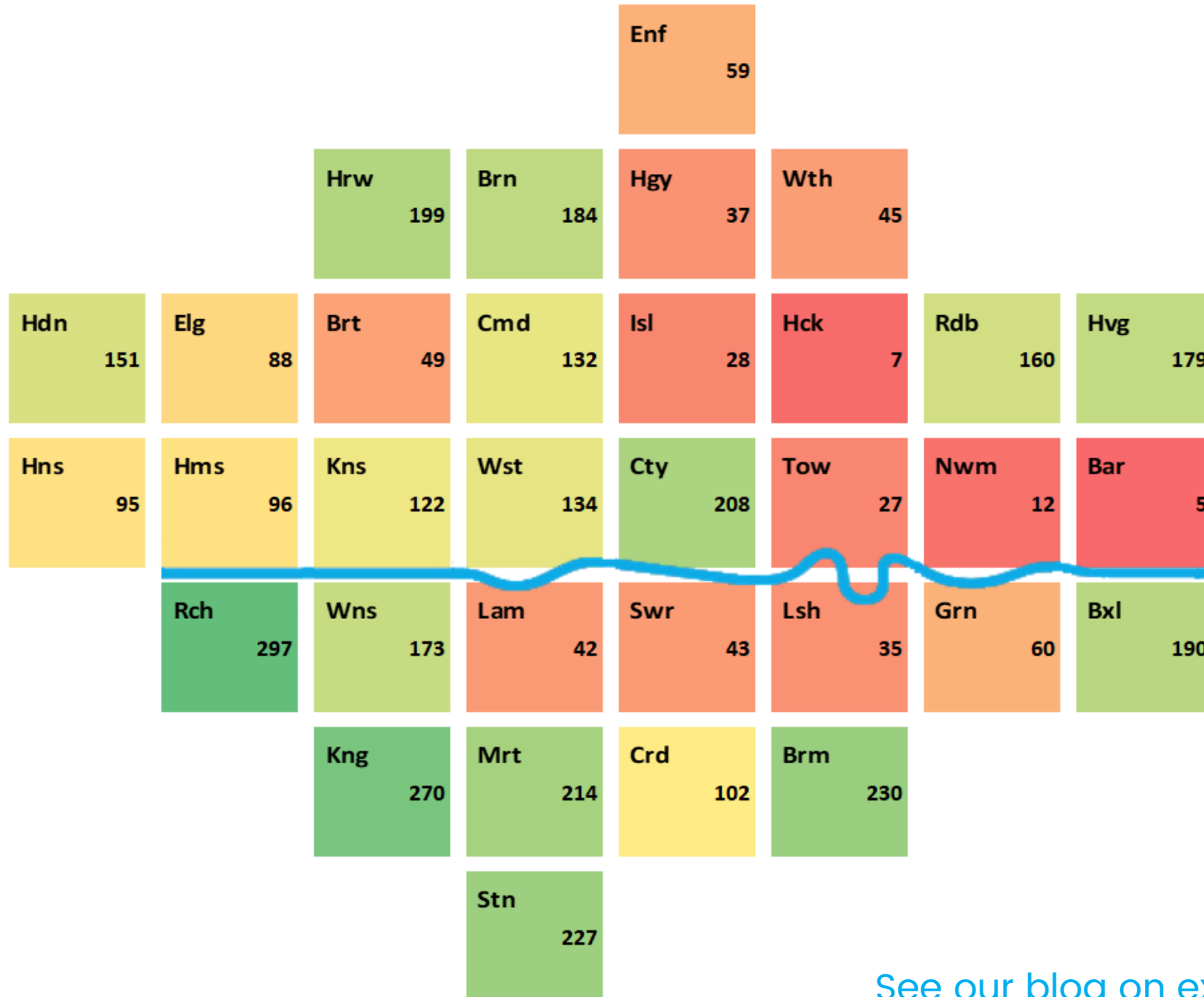


Number of People in Borough

- 0 - 78,983
- 78,983 - 157,966
- 157,966 - 236,949
- 236,949 - 315,932
- 315,932 - 394,915

Source: GLA Demography 2018 Based Population Projections  
Graphic by GLA City Intelligence

# Indices of Deprivation



Wandsworth is the 11<sup>th</sup> least deprived Borough in London

It is 173<sup>rd</sup> least deprived in the UK (out of 317 local authority areas)

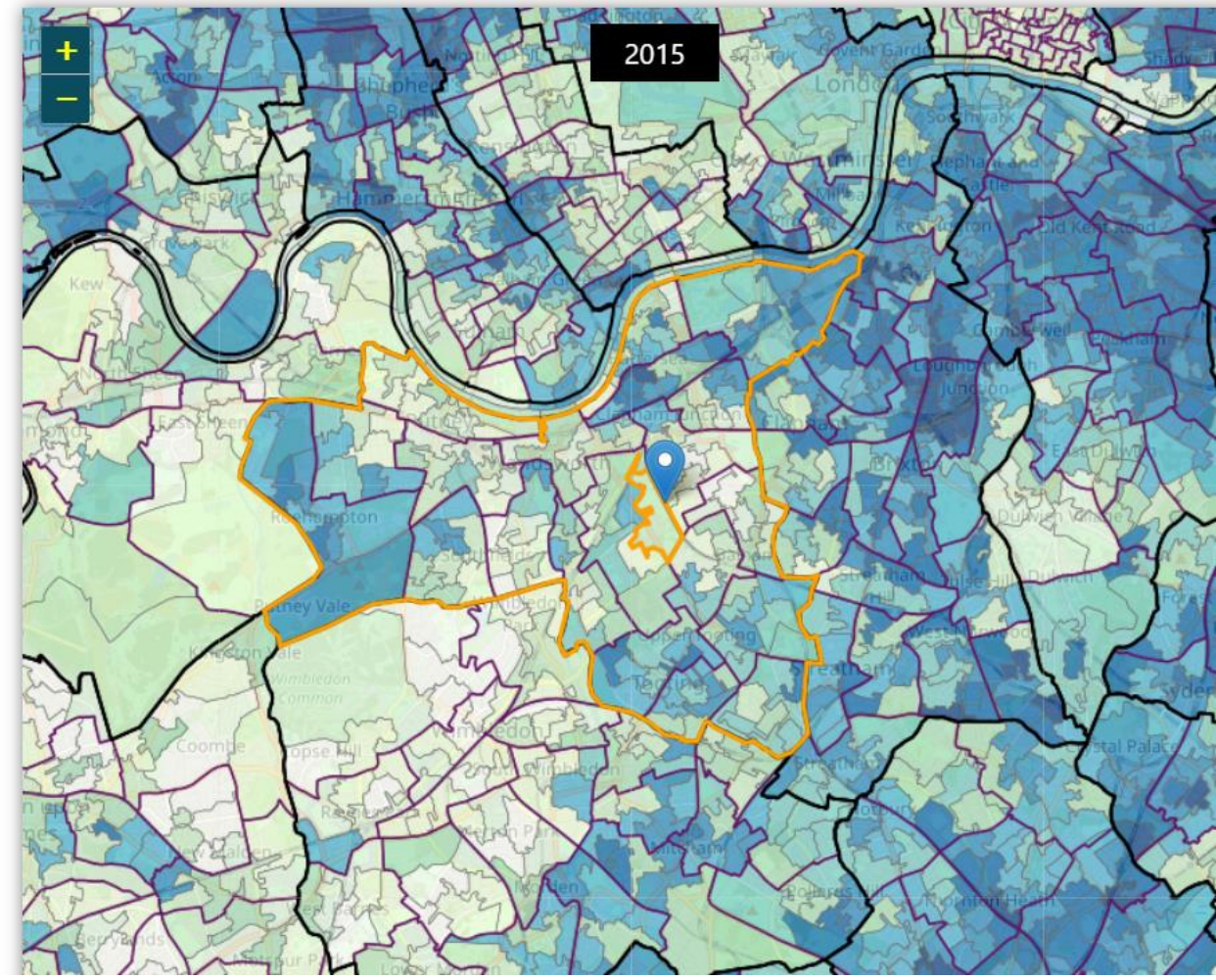
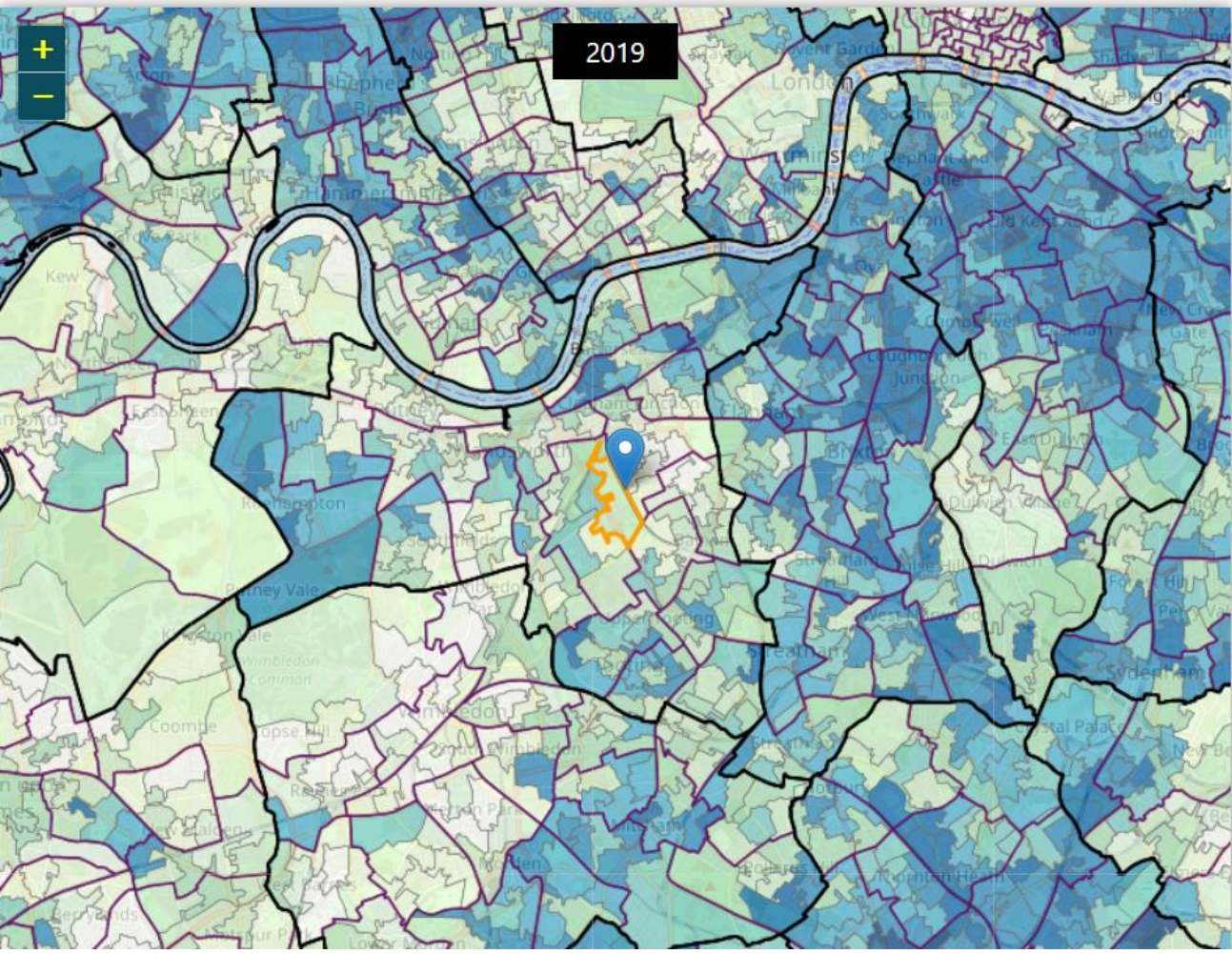
[See our blog on exploring IMD data for your area](#)



# Indices of Deprivation: 2019 and 2015

Switch domain to:   Viewing **Index of Multiple Deprivation (IMD)**

2019 map  
2015 map



Indices of Multiple Deprivation - [Comparison map of 2015 & 2019](#)

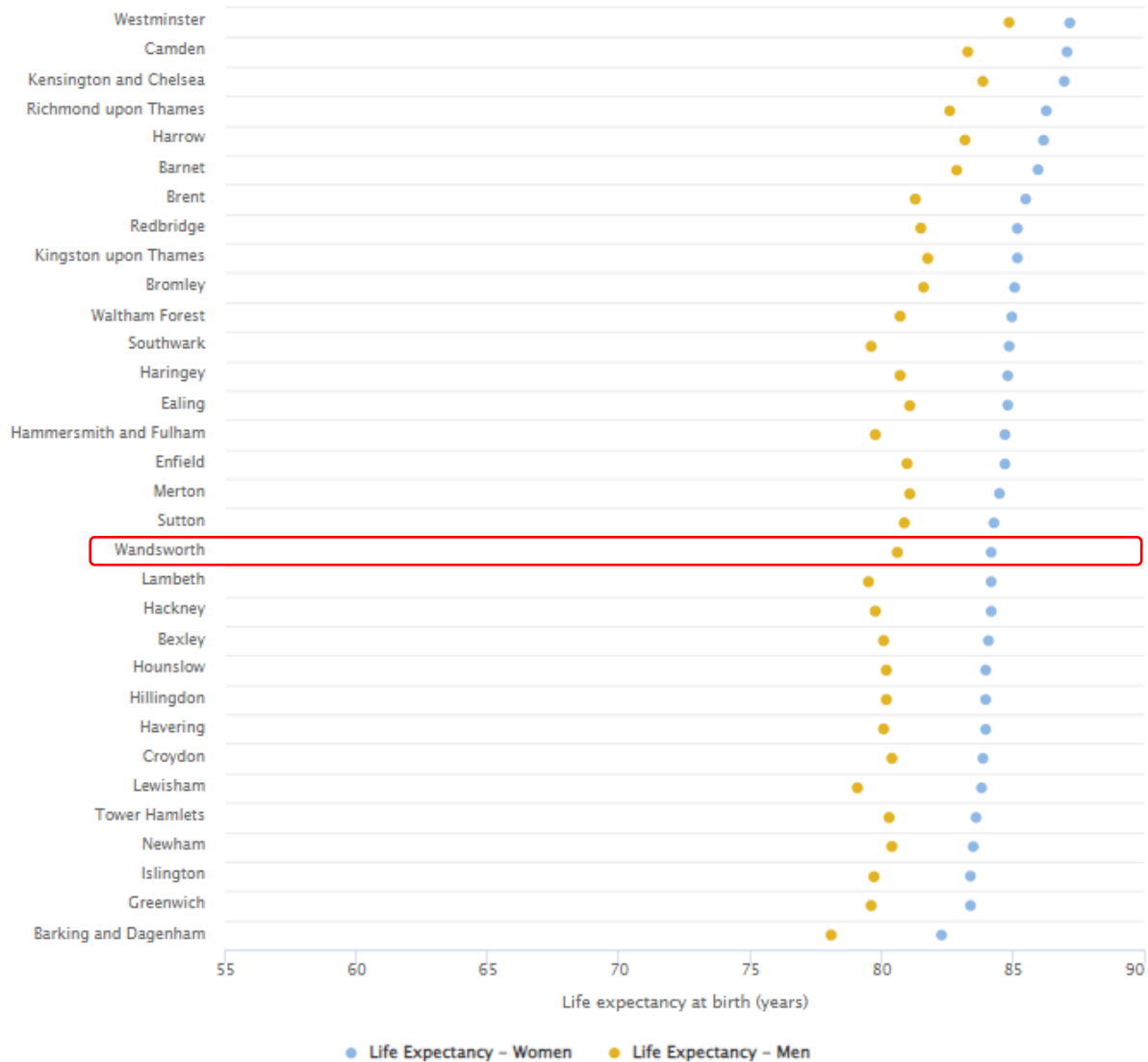


## Life expectancy at birth by London borough (2017-19)

Data source and notes

Share

Download chart

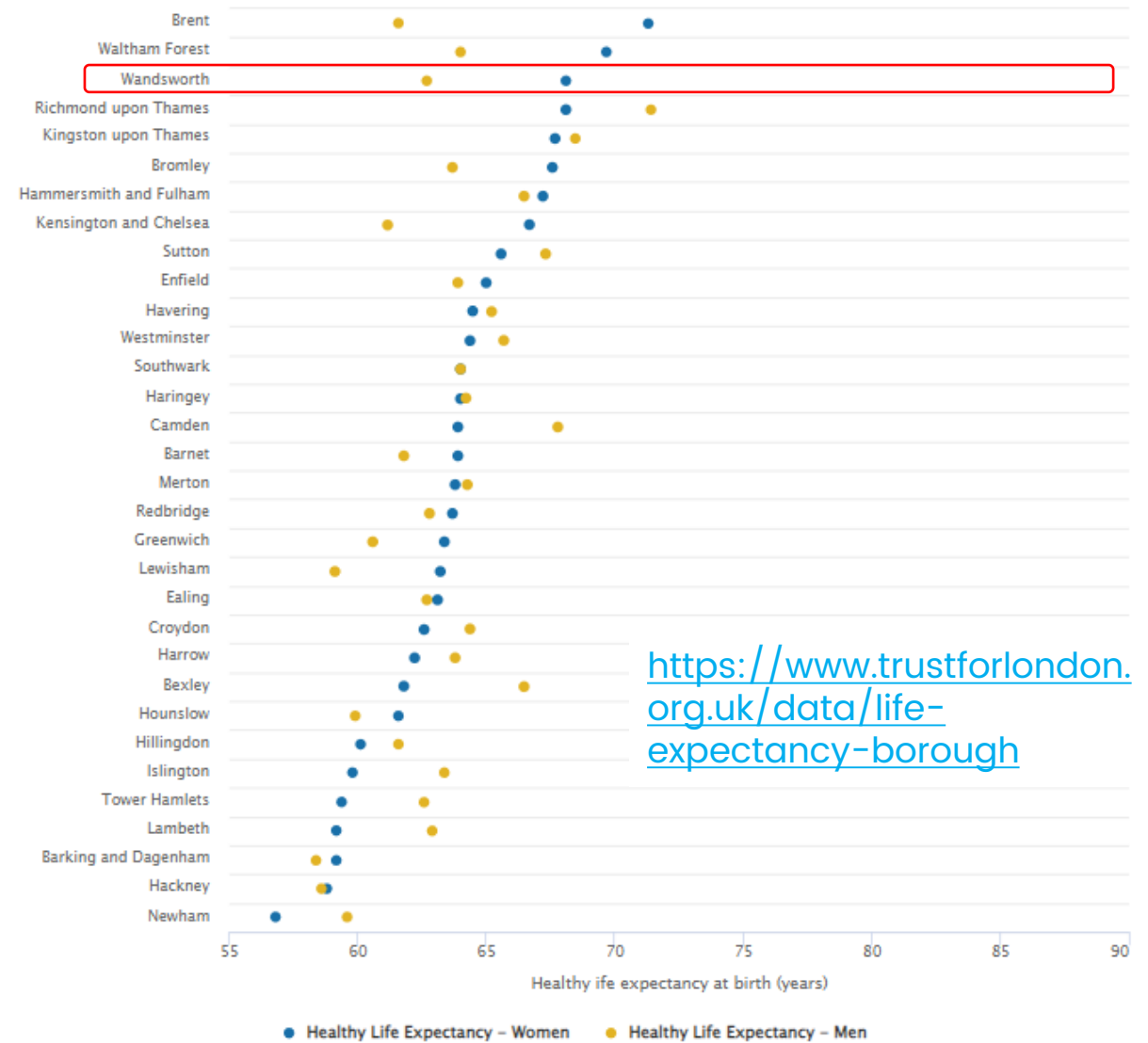


## Healthy life expectancy at birth by London borough (2017-19)

Data source and notes

Share

Download chart



<https://www.trustforlondon.org.uk/data/life-expectancy-borough>

# London Poverty Profile



# London's Poverty Profile

Official data from over 100 indicators, revealing patterns in poverty and inequality.

## Explore Data by



Topics



Populations



Boroughs

### Key findings

**27%**

of Londoners are living in poverty, after housing costs.

**56,000**

London households are in temporary accommodation - an increase of 30% compared to five years ago.

**76%**

of children in poverty in London are in working families - an increase of 8%, or 80,000 children, from five years ago.



# London Poverty Profile: Quick Question

- ✓ What is the increase in working age Londoners out of work **and** claiming Universal Credit between May 2019, May 2020 and May 2021?
- ✓ *Tip - navigate to explore by Topic and then choose Work, Worklessness and Benefits. Look at the first Out of Work benefits chart. Tip - click on the columns to see the values..*





# Proportion of Londoners aged 16-64 receiving out-of-work benefits by benefit type (2013 - 2021) (Q2)

Borough Comparison: Work, Worklessness & Benefits

Employment rate by highest qualification

Employment-related deprivation

English Index of Multiple Deprivation, rebased for London

Hours worked

Households affected by the benefit cap

Households and their work status

Households and their work status by net income quintile

Labour market activity

Low-paid jobs in London

Low-paid Londoners

Low pay in London boroughs

**Out-of-work benefits**

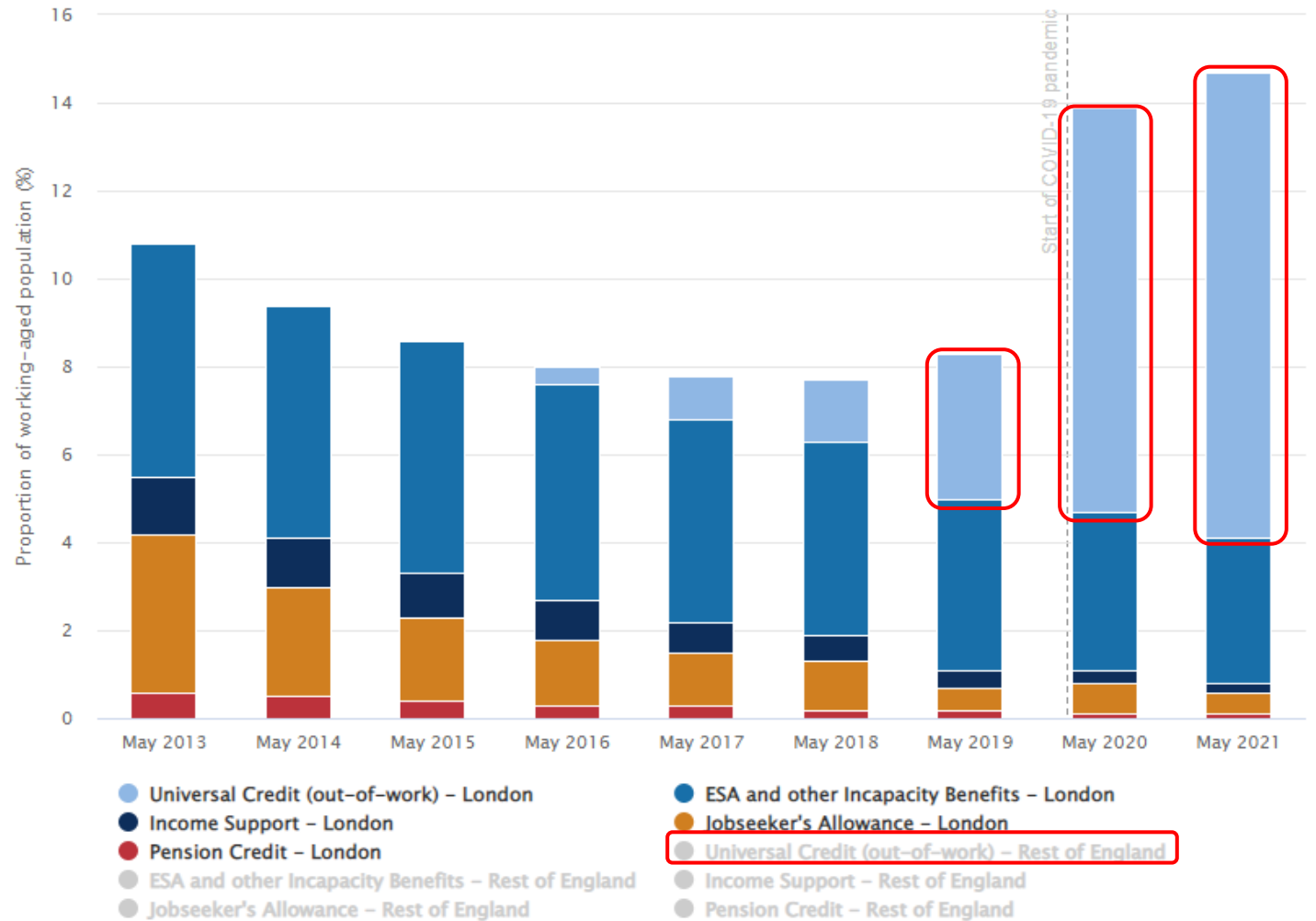
Pay inequality by London borough

Pay per hour

Data source and notes

Share

Download chart





# London Poverty Profile: Answer

- ✓ An increase from 3.3% to 9.2% to 10.6%
- ✓ Just over a threefold rise over 2 years, (or just over a 7 percentage points increase)
- ✓ Rest of England figures 3.6% to 8.5% to 9%



# London Data Store



# London Datastore – Getting the best from Area Profiles

**Data Selector**  
Click on the map icon to switch between borough and ward level. Click on the database symbol to change data and click on the pin icon to filter by borough.

**Map**  
Click on an area to display its data in the large table.

**View report**  
When you have selected a geographic area, you can click on the "View report" button to generate a report visualising a range of the latest demographic, economic, social and environmental information available for that area.

**Metadata**  
Additional information about a chosen indicator including a link to the source dataset

**Large Table**  
This displays the data of a selected area for every indicator alongside comparisons with London and England. Click on a specific indicator to display its data on the map, chart and small table.

The screenshot shows the London Datastore interface. At the top left, there are 'Share' and 'Help' buttons. Below them is a map of London with boroughs shaded in different colors. A 'View report for Westminster CZ' button is visible at the top right. The main content area is divided into several sections:

- Map:** Shows a map of London with boroughs shaded. A legend below the map shows color-coded ranges for population.
- Legend:** A legend for the map showing population ranges and corresponding colors.
- Small Table:** A table showing population data for selected boroughs.
- Large Table:** A table showing demographic and economic indicators for Westminster, London, and England.
- Chart:** A bar chart showing employment rates for different age groups.

**Legend**  
Click on the cog icon to change settings such as colours and number of classes.

**Small Table**  
This table displays a selected indicator allowing you to compare between areas.

**Chart**  
Hover over the chart to view a particular value. Click on a bar to display that Borough's data in



# London Data Store – key sites

- ✓ London Data Store – [London area / borough profiles](#)
- ✓ London Data Store – [Population projections explorer](#)
- ✓ London Data Store – borough / ward [Excel mapping templates](#)
- ✓ Mayor of London Survey of Londoners – [Headline findings](#)
- ✓ London Community Response Survey – [Covid-19 weekly results](#)
- ✓ Making the most of the London Data Store – [Scenario guides](#)
  - ✓ UNDERSTANDING THE IMPACT OF WARD LEVEL POPULATION GROWTH ON YOUR SERVICES
  - ✓ TARGETTING SERVICES TO OLDER PEOPLE MOST LIKELY TO BE SOCIALLY EXCLUDED
  - ✓ UNDERSTANDING YOUR LOCAL AREA – ARE VOLUNTEERS REFLECTIVE & WHAT ABOUT CRIME STATS



# London Area Profiles: Quick Question

- ✓ What is the self reported % of Bad and Very Bad Health for Bexley as a borough and for Cray Meadows as a Ward. Can this difference be explained by the proportion of the population that are 65+
- ✓ *Select Bexley and then scroll down in the right hand table to find the Health section. Then select the Ward view of the map, select Cray Meadows and then find the corresponding values for Health conditions and Age*
- ✓ Bexley = 4.8% and Cray Meadows = 6% for Bad and Very Bad Health
- ✓ Bexley = 16.37% and Cray Meadows = 15.47% of the population over 65 years



# Population projections

- ✓ Go to <https://apps.london.gov.uk/population-projections/>
- ✓ How many boroughs have a population over 317,367 in 2021
- ✓ How will this change in 2030?
- ✓ Which three boroughs have the biggest birth rate in 2021?



# Use Search to find other data sets...

- ✓ [Equalities, diversity and inclusion measures](#) – school exclusion rates by borough
- ✓ [Young People NEETs by borough](#)
- ✓ [Pupils eligible for free school meals by borough](#)  
(primary & secondary)
- ✓ [Access to open space and nature by Ward](#)



# What do we need to consider when using external data?

- ✓ Ideas in chat please
- ✓ See crowdsourced ideas





### Advice trends

[www.citizensadvice.org.uk/about-us/difference-we-make/advice-trends/](http://www.citizensadvice.org.uk/about-us/difference-we-make/advice-trends/)

Advice trends summarises Citizens Advice service top level statistics. It is aimed at national government departments, regional agencies; third sector organisations concerned with advice or policy and policy researchers.



### Ethnicity Facts & Figures

[www.ethnicity-facts-figures.service.gov.uk/](http://www.ethnicity-facts-figures.service.gov.uk/)

Headline figures from each government department detailing ethnic inequalities in the UK.

### LONDON DATASTORE

### London Datastore

[data.london.gov.uk](http://data.london.gov.uk)

The London Datastore is a free and open data-sharing portal where anyone can access data relating to the capital.



### London's Poverty Profile

[www.trustforlondon.org.uk/data/](http://www.trustforlondon.org.uk/data/)

Official data from over 100 indicators, revealing patterns in poverty and inequality.



### Metropolitan Police

[www.met.police.uk/sd/stats-and-data/](http://www.met.police.uk/sd/stats-and-data/)

Tools to help see what local police forces are doing to combat crime, identify different types of crime and map out different crime stats.



### Nomis

[www.nomisweb.co.uk](http://www.nomisweb.co.uk)

Data from a range of surveys, including the 2011 Census. Enter a location and get a report detailing population characteristics of the local area.



### Public Health

[fingertips.phe.org.uk/](http://fingertips.phe.org.uk/)

Rich source of indicators across a range of health and wellbeing themes that has been designed to support JSNA and commissioning to improve health and wellbeing and reduce inequalities



### Stat-Xplore

[stat-xplore.dwp.gov.uk](http://stat-xplore.dwp.gov.uk)

Explore Job Centre data, including types of benefits received, and rates that sanctions are applied, by area and individual characteristics.



### The London Intelligence

[www.centreforlondon.org/project/london-intelligence/](http://www.centreforlondon.org/project/london-intelligence/)

Quarterly publication from the Centre for London, that identifies the changes taking place in the City to help policy makers prepare and plan for the future. Analyses the latest data under five major themes: Demography, Economy, Infrastructure and housing, Society and Health and environment.



### UK Data Service

[www.ukdataservice.ac.uk](http://www.ukdataservice.ac.uk)

Holds a range of social, economic and population datasets. They also publish 'how to' guides and case studies of effective use of data.



### Understanding Society

[www.understandingsociety.ac.uk](http://www.understandingsociety.ac.uk)

Search results from academic research using the UK's largest representative household survey.



### Ward Profiles and Atlas

[data.london.gov.uk/data-set/ward-profiles-and-atlas](http://data.london.gov.uk/data-set/ward-profiles-and-atlas)

Provide a range of demographic and related data for each ward in Greater London. They provide an overview of the population in these small areas including data on population, diversity, households, life expectancy, housing, crime and employment.



### Who runs London

[www.londoncouncils.gov.uk/who-runs-london](http://www.londoncouncils.gov.uk/who-runs-london)

London Councils publish data from London's local elections, London MPs and their constituencies and data looking at 50 years of political control of the boroughs.



### YouGov Results

[yougov.co.uk/results/](http://yougov.co.uk/results/)

Runs surveys of public opinion on topical issues, with gender, age and social class breakdowns.

**NPC**



# Interactive Covid-19 data for charities and funders





# 360Giving's GrantNav – grants data

<https://grantnav.threesixtygiving.org>

Bexley Parents

Search All Fields  Locations  Recipients  Titles & Descriptions

Current Filters Clear All Filters

Districts: Bexley London Boro ✕

Award Year: 2021 ✕ 2020 ✕ 2019 ✕

Tip: If you're looking for a specific phrase, put quotes around it to refine your search. e.g. "youth clubs". For more tips, see [Advanced Search](#)

Filter By <sup>?</sup>

Currency  
GBP (25)

Amount Awarded (GBP)  
Smallest Largest Apply  
£0 - £500 (0)  
£500 - £1,000 (0)  
£1,000 - £5,000 (7)  
See More

Recipient Region  
London (25)

Recipient District (clear)  
Glasgow City (56)  
Leeds District (40)  
City of Edinburgh (38)  
See More

Award Year (clear)  
2021 (1)  
2020 (10)

Results Sort By: Best Match

[.CSV](#) [.JSON](#) <sup>?</sup>

Total grants	25	Total GBP grants	25
Total funders	10	Total GBP awarded	£944,601
Total recipients	18	Largest GBP award	£150,000
Earliest award date	07 Feb 2019	Smallest GBP award	£1,000
Latest award date	05 Jan 2021	Total Non-GBP grants	0

Grant to Age UK Bexley 30 Apr 2019

Bexley Befriending Cafes

Amount: £36,141  
Funder: The Charity of Sir Richard Whittington  
Recipient: Age UK Bexley  
Region: London  
District: Bexley London Boro

Grant to Bexley Snap 15 Nov 2019

We want to subside our minibus, taking disabled children and young people on trips and providing transport for parents to access our clubs.

Amount: £9,258  
Funder: Co-operative Group  
Recipient: Bexley Snap  
Region: London  
District: Bexley London Boro

Releasing the Unlimited potential of Bexley's young people through men 24 Oct 2019

Releasing the Unlimited potential of Bexley's young people through men

Amount: £77,500  
Funder: The National Lottery Community Fund  
Recipient: CRIBS Charitable Trust  
Region: London  
District: Bexley London Boro

# Don't forget local authority data sites



FORMAT

PDF File 19

TOPIC

**Joint Strategic Needs Assessment (JSNA)**

Health and social care 15

Crime and community safety 5

Children, schools and families 4

Topic **Joint Strategic Needs Assessment (JSNA)**

## Transportation - JSNA 2019/20

London Borough of Brent

Updated 6 months ago

Brent is well served with public transport including London Underground and Overground lines, National Rail and buses. More people are either walking, cycling or using public transport resulting in the number of vehicles per household reducing to 0.8. In 2017 1,158 people were injured on Brent's roads in 933 recorded accidents, of these six resulted in the loss of life and 126 were serious injuries. This figure is higher than the London...

[#Transport](#) [#JSNA](#) [#road accidents](#) [#health](#)

(848.85 kB)

## Brent Joint Strategic Needs Assessment 2019/20

# Community Lens mapping tool

Community Lens V0.1

[Request Datasets](#) [About](#)

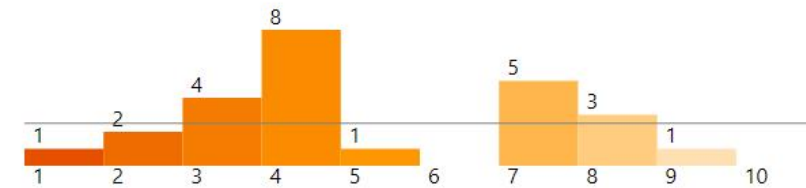
## The Lens of Multiple Deprivation

### Summary

The majority of the locations (64%) are in the bottom half of areas in England for IMD

### Count By Decile

(Decile 1 = Most Deprived, Decile 10 = Least Deprived)



### Average Rank Decile



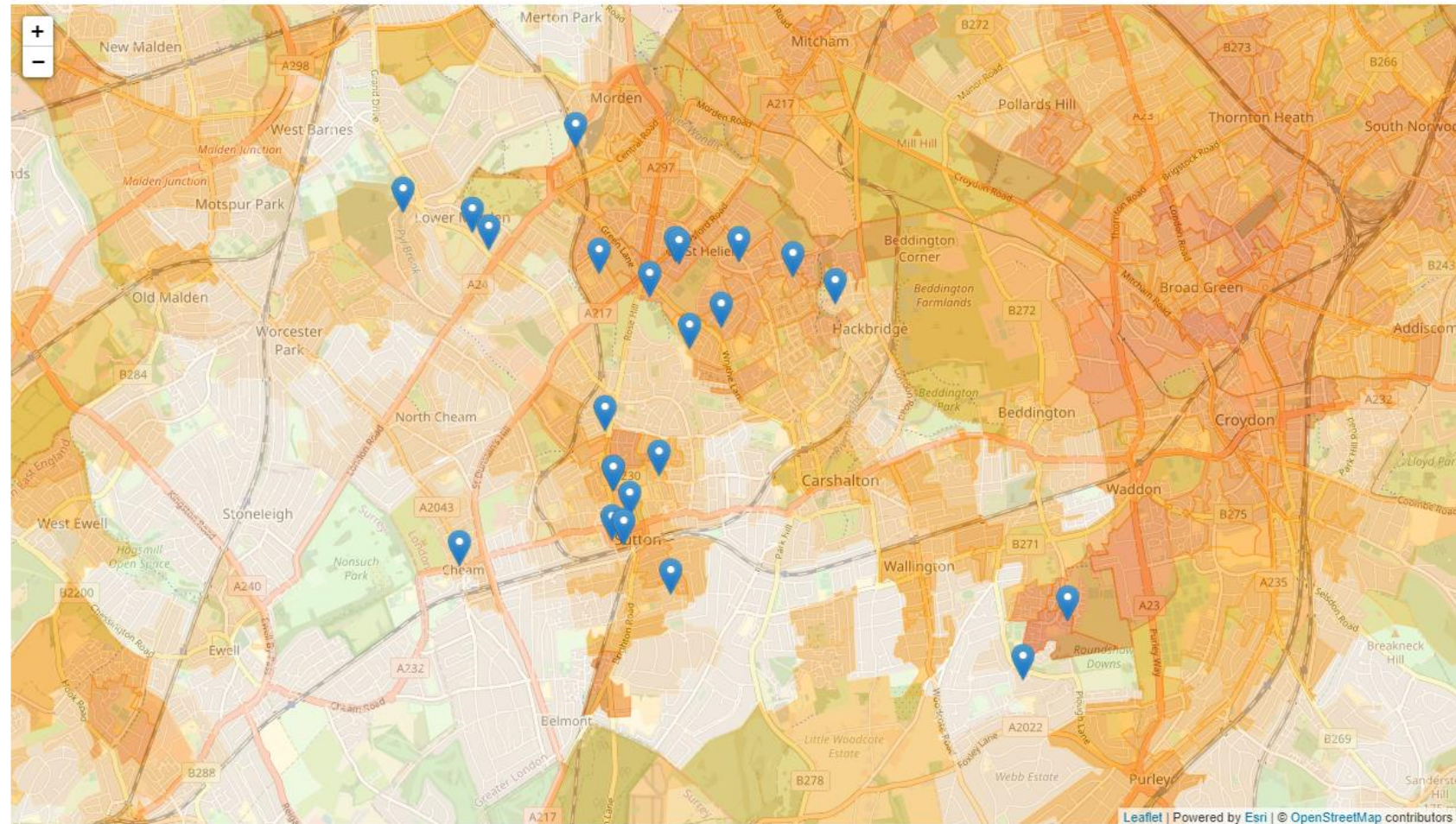
### Definition

The overall Index of Multiple Deprivation 2019 is a measure of multiple deprivation based on combining together seven distinct domains of deprivation, Income Deprivation, Employment Deprivation, Education, Skills and Training Deprivation, Health Deprivation and Disability, Crime, Barriers to Housing and Services, Living Environment Deprivation.

### Data Source

[Download Data](#)

IMD 2019 | Income | Employment | Education + | Health and Disability | Crime | Housing and Services | Living environment



# Community Lens Summary

- ✓ Paste postcodes into the tool (can handle large numbers) and see them plotted on the map
- ✓ Choose which Indices of Deprivation you are interested in
- ✓ Understand how your postcodes correlate with the IMD data
- ✓ Take a screen shot and download the data table
- ✓ More open data sets to come (make your suggestions)
- ✓ [See a demo recording](#)





# Exploring data in Local Insight

**Consistent and accurate  
open data**

Demographic, social &  
economic indicators

**Visualise**

Maps, profiles  
& dashboards

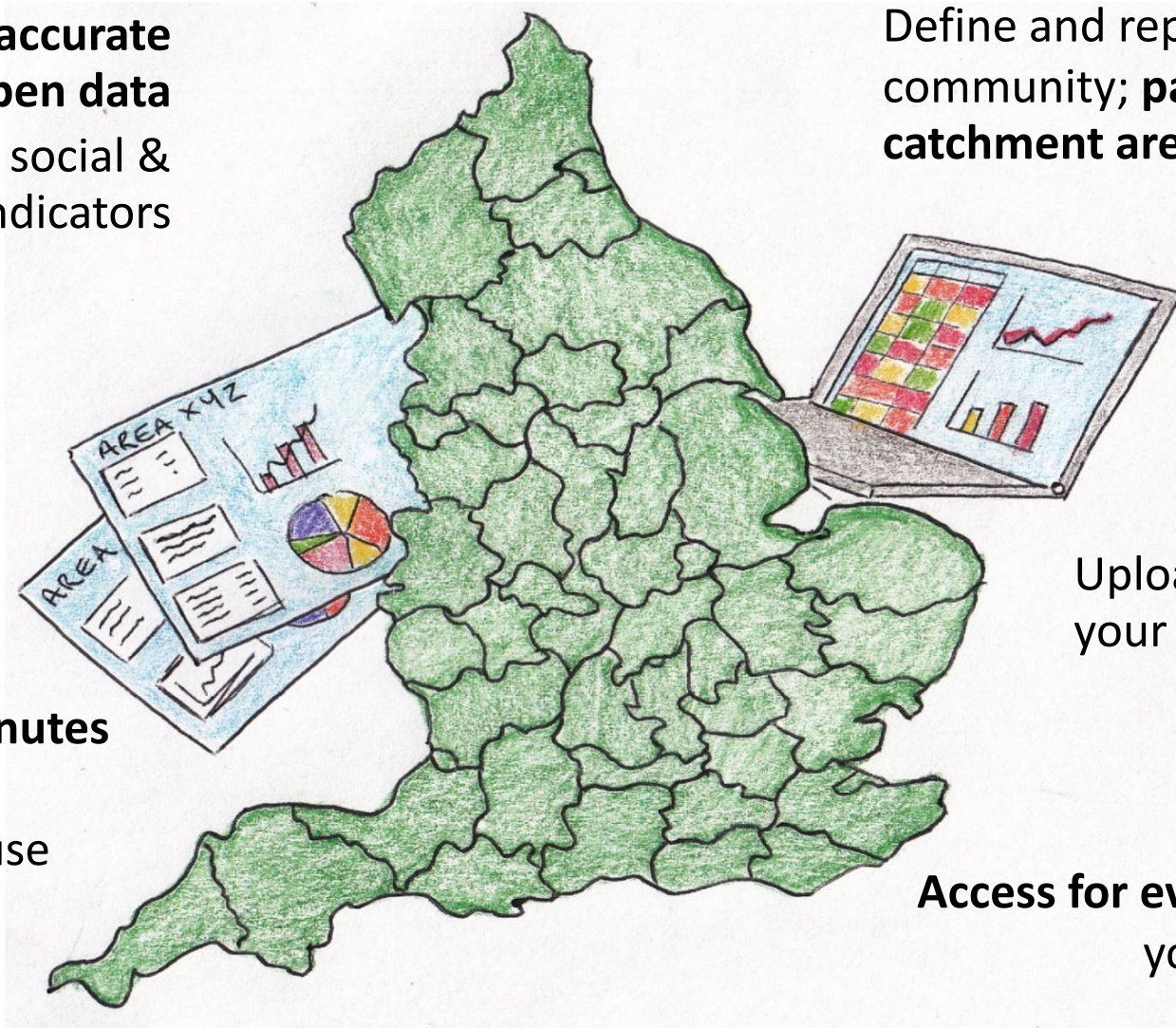
**Up & running in minutes**

- Zero overhead,  
intuitive & easy to use

Define and report on any  
community; **parishes, wards,  
catchment areas**

Upload & visualise  
your own **local data**

**Access for everybody** across  
your organisation

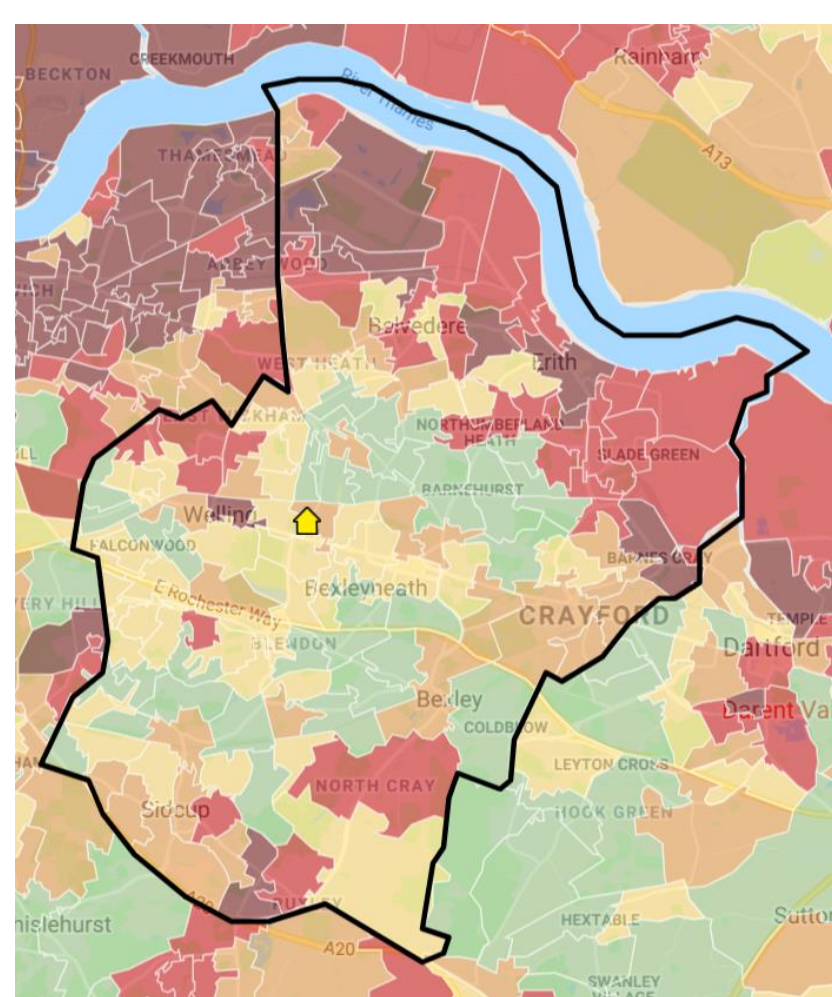


# Local Insight public sites

- Lambeth & Southwark - <https://guysandstthomas.communityinsight.org/>
- Barking & Dagenham, Redbridge, Havering - <https://bhrjsna.communityinsight.org/>
- Hounslow - <http://insight.hounslow.gov.uk/>
- Or book a 1:1 with Superhighways – we've subscribed to the platform – email [info@superhighways.org.uk](mailto:info@superhighways.org.uk)



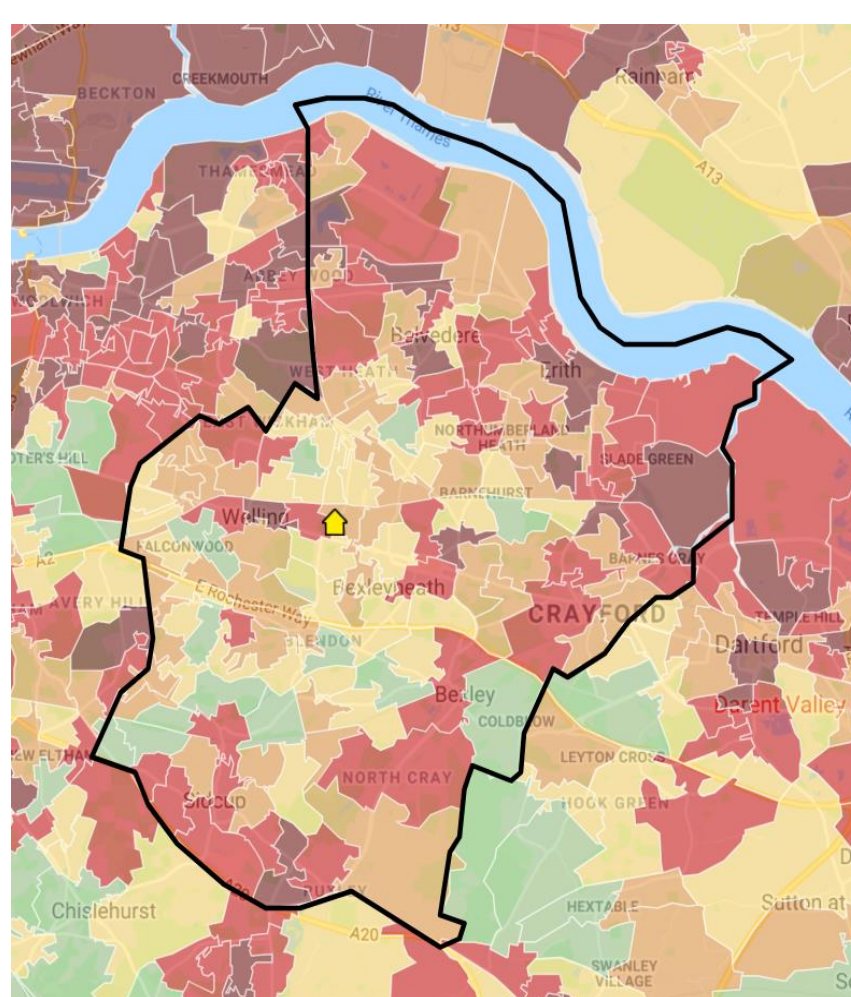
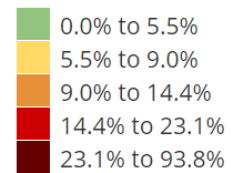




### Pensioners in poverty (Pension Credit)

The colours on the map show % of Pension Credit claimants (% of all pensioners)

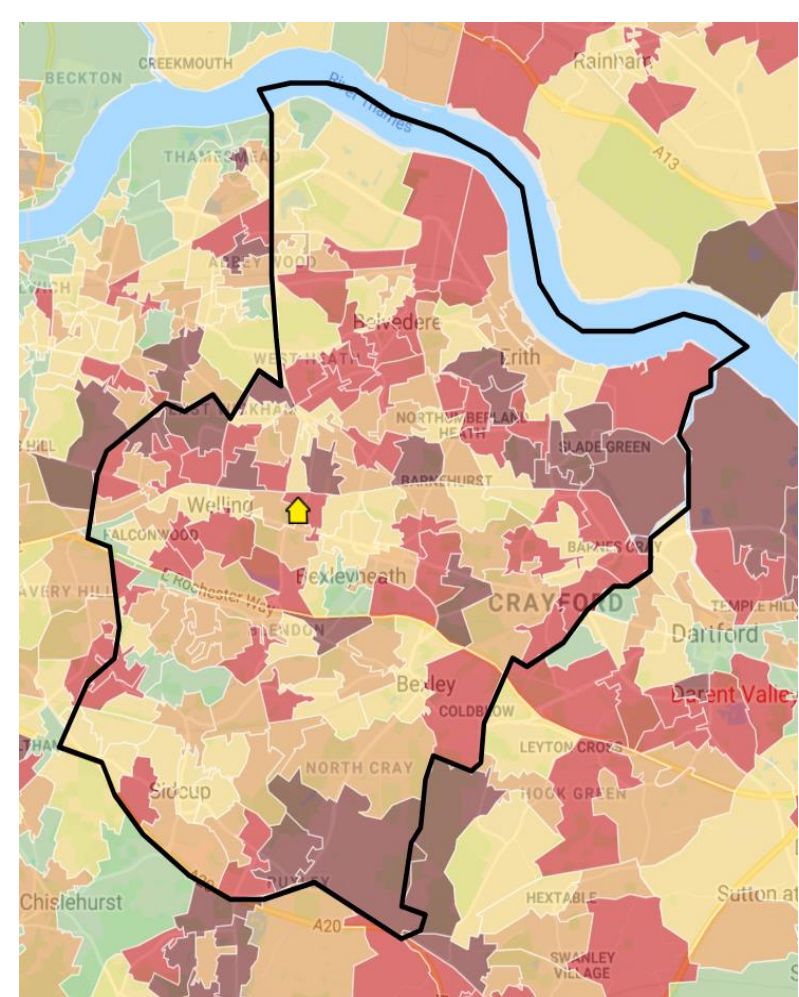
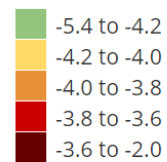
Showing all areas at LSOA level



### Probability of loneliness for those aged 65 and over

The colours on the map show Probability of loneliness for those aged 65 and over (closer to zero = higher probability of loneliness)

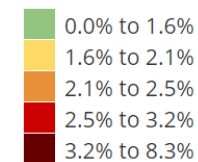
Showing all areas at LSOA level



### Provides 50+ hours unpaid care a week

The colours on the map show % of people providing unpaid care 50+ hours per week (as a % of all people)

Showing all areas at LSOA level



# What do you see on these Local Insight maps?

---

- ✓ In small groups
- ✓ Breakout rooms
- ✓ Two questions about each map
- ✓ Make notes of any questions or insights
- ✓ Google doc



# Thank you for coming!

KATE WHITE

[info@superhighways.org.uk](mailto:info@superhighways.org.uk)

[@SuperhighwaysUK](#)



Trust for London

Tackling poverty and inequality