



# Impact of London's Local Infrastructure

A report by [London Plus](#)



## Amplifying action and voice in 2022-23

Local voluntary, community and faith organisations are the beating heart of community action in the capital, ensuring local people can take part in activities that help them stay healthy, know and access their rights, find respite from the toughest of situations, learn new skills and even meet their most basic of needs.

The last year has seen seismic political, economic and social shifts, with the cost

of living crisis becoming a new normal post-pandemic and exacting enormous pressure on existing services.

London's Councils for Voluntary Services (CVSS) are the backbone of the voluntary and community sector year on year.

From leveraging £24.6 million funding for communities to reaching 21,000+ community organisations, their expertise, connections and leadership in 2022-23 has amplified local action and voice at a time when we all need to strive for a fairer future for all Londoners.

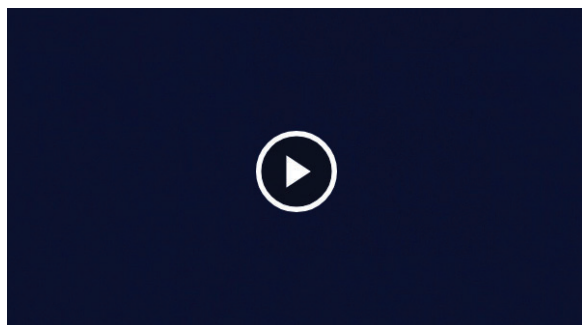
A report by [London Plus](#)

## What is a CVS?

A CVS is an organisation that supports, connects, promotes and brings together local charities and community groups.

They also champion local issues, sparking social action and change, together striving to create a better, fairer London for all.

Watch the video to find out more.



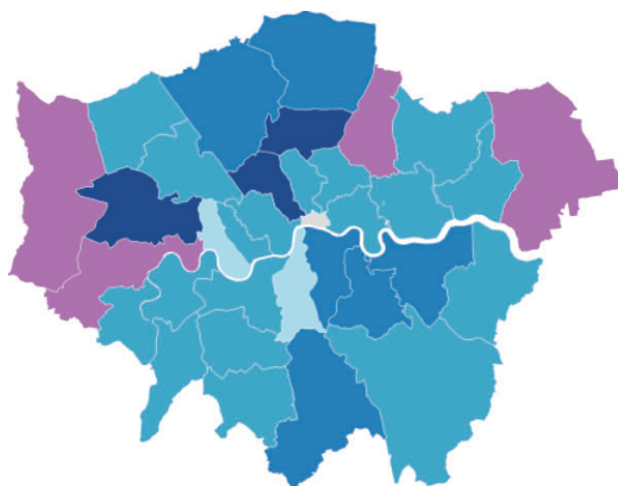
A report by [London Plus](#)

# CVSs in London

In London CVSs are based in 29 London boroughs. The 4 boroughs which do not have a CVS are: Hillingdon, Havering, Waltham Forest and the City of London.

There are 30 CVSs in total, with some boroughs having more than one CVS, and some CVSs working across more than one borough.

**Click on the map to learn more about the CVS in each borough, you can click through to their website or impact report.**



London CVSs and reach (the number of VCSEs in their databases)  
 No CVS No data 1 - 750 750 - 1500 1500+

## Data notes

- 2 boroughs are missing data about reach (Lambeth and Hammersmith & Fulham)
- 2 boroughs have more than one CVS (Barnet and Newham)
- 4 boroughs do not have a CVS based there (Hillingdon, Havering, Waltham Forest, City of London)
- Some CVSs work across more than one borough (e.g. Ealing & Hounslow CVS)

# A varied sector

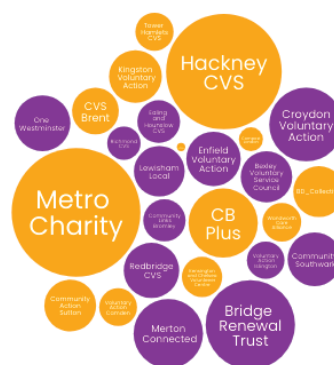
CVSs range in staff size, income and expenditure.

In addition to core services, 46% provide social prescribing activities, 71% run direct community development programmes and 71% redistribute grants.

Some also run Volunteer Centres and others host a local Healthwatch or Local Giving initiative.

## London local infrastructure bodies Spending in 2022/23

CVS CVS and Volunteer Centre



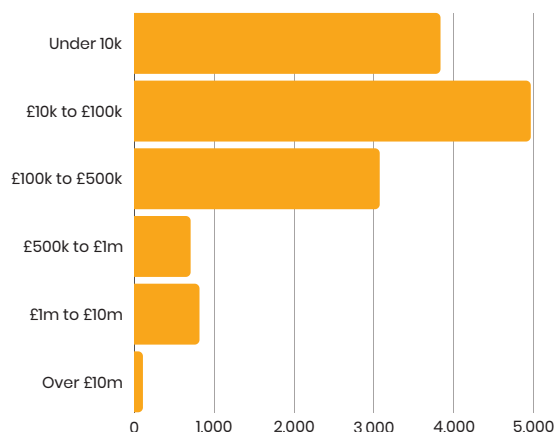
## Data notes

- Source: Analysis of Charity Commission Data for 2022-2023
- This uses latest available spending figures (either for 2023 or for 2022)
- Spending figures were not available for Voluntary Action Harrow and Barnet Together Alliance (not included in visual)

# Supporting a diverse sector

13,502 registered charities work locally across London with 65% having an income of under 100k.

But registered charities are just the tip of the iceberg. In addition there are thousands of non-registered grassroots and 'Below the Radar' organisations supporting local communities in London.



## Data notes:

Estimates based on London's Local + Regional registered charities, with universities & independent schools removed and some additional manual removals.

Organisations that are so small and informal have a more holistic approach and are very much community driven.

I see in our borough, person centred services by communities and for communities.

Community Southwark CEO

## → What support do VCSE organisations need and how does a CVS help?

The following scenarios are framed around the key needs of a VCSE organisation, at various stages of growth and development. It highlights how and why CVSs help them to thrive.

These scenarios are based on common themes and quotes identified in impact reports and case studies submitted by 28 CVSs, as well as wider sector data and research.

When they need support to grow and develop their organisation, to access funding, connect with networks or influence change for the communities they represent, turning to their local CVS can hugely increase the impact they make.

## → Scenario 1: A small VCSE wants to grow

A volunteer led group is struggling to keep up with requests for their support.

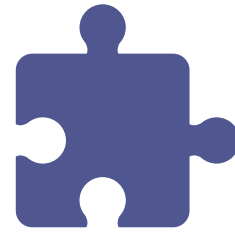
They want to look for funding so that they can employ a member of staff. They are uncertain about whether they should register as a charity to help with this.

They approach their local CVS for support.

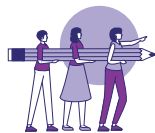


## The CVS provides information and signposting

- They tell the group about their free upcoming training on 'setting up and setting out' which covers legal structures.
- They send a newsletter with current funding and local commissioning opportunities.
- They share information about an upcoming 'meet the funder' event.



## In 2022-23 London CVSs gave information to



**21,000+**

VCSE organisations

(21,187 registered on their databases)



**96,500+**

Newsletter subscribers

(96,620 signups to a regular e-bulletin)



**120,000+**

Followers on social media

(121,387 followers across social media platforms)

CommUNITY Barnet's newsletter delivers the most useful information and is a trusted source that helps keep our sector alert to changes, funding and so much more. Love the design! Thank you all at CB!